

MALNR FIVE ARRIVAL (RNAV)

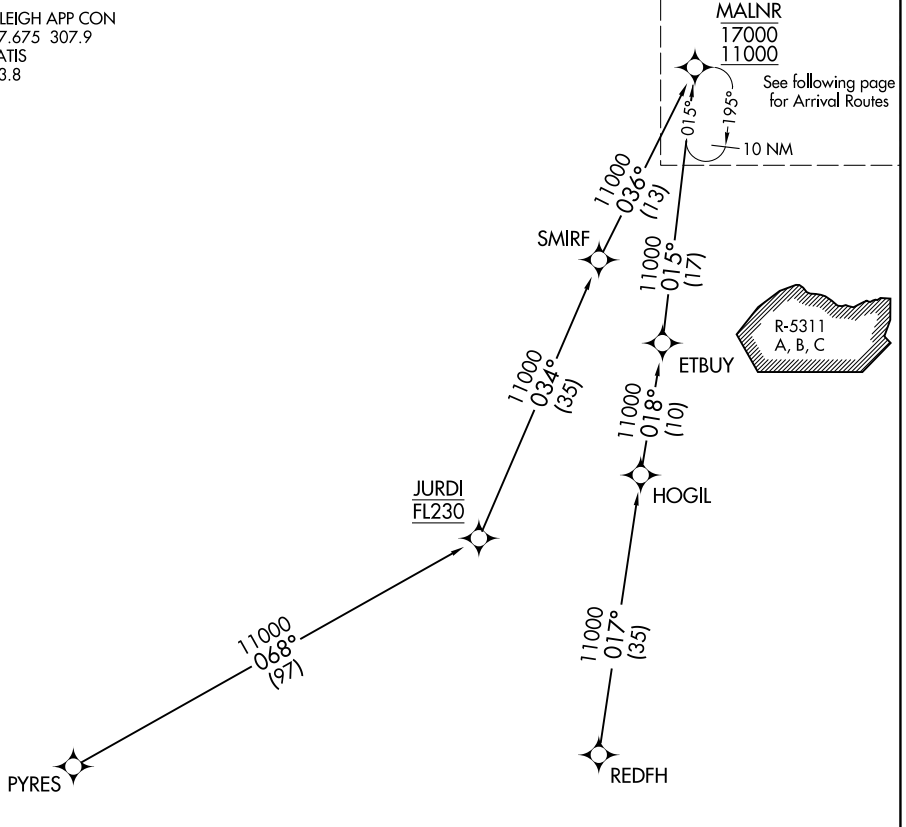
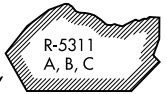
Transition Routes

RALEIGH-DURHAM INTL (RDU)
RALEIGH/DURHAM, NORTH CAROLINA

RALEIGH APP CON
127.675 307.9
D-ATIS
123.8

MALNR
17000
11000

See following page
for Arrival Routes



SE-2, 09 SEP 2021 to 07 OCT 2021

SE-2, 09 SEP 2021 to 07 OCT 2021

PETTO

- NOTE: RADAR required.
- NOTE: RNAV 1.
- NOTE: DME/DME/IRU or GPS required.
- NOTE: Turbojet aircraft only.
- NOTE: REDFH TRANSITION assigned by ATC only.
- NOTE: Jet aircraft descend via MACH number until 280K, maintain 280K until slowed by the STAR or ATC, if unable, advise ATC.

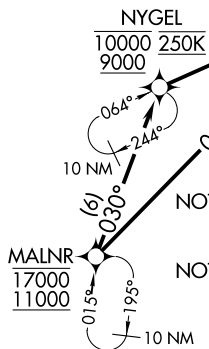
(CONTINUED ON FOLLOWING PAGE)
(NARRATIVE ON FOLLOWING PAGE)

JURDI TRANSITION (JURDI.MALNR5)
PYRES TRANSITION (PYRES.MALNR5)
REDFH TRANSITION (REDFH.MALNR5)

NOTE: Chart not to scale.

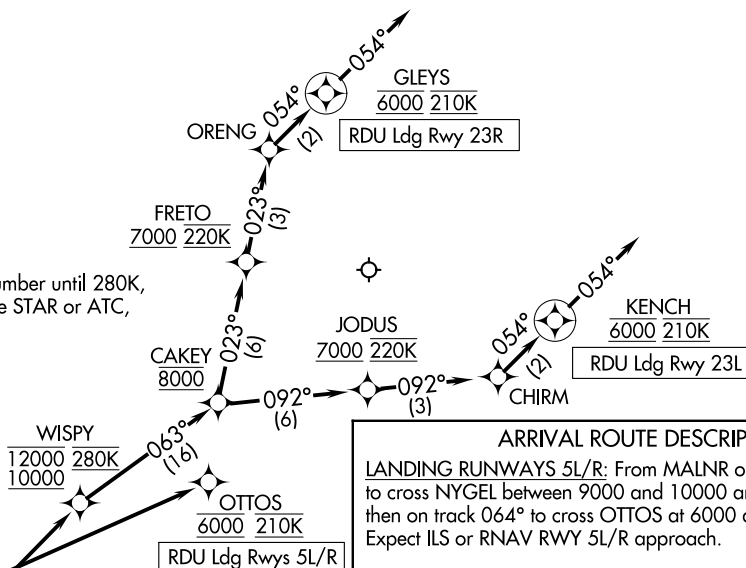
RALEIGH APP CON
127.675 307.9
D-ATIS
123.8

- NOTE: RADAR required.
- NOTE: RNAV 1.
- NOTE: DME/DME/IRU or GPS required.
- NOTE: Turbojet aircraft only.
- NOTE: Jet aircraft descend via MACH number until 280K, maintain 280K until slowed by the STAR or ATC, if unable, advise ATC.



- NOTE: LANDING NORTHEAST: Use Rwy 5L transition. Expect runway assignment from TRACON prior to MALNR.
- NOTE: LANDING SOUTHWEST: Use Rwy 23R transition. Expect runway assignment from TRACON prior to MALNR.

NOTE: Chart not to scale.



ARRIVAL ROUTE DESCRIPTION

LANDING RUNWAYS 5L/R: From MALNR on track 030° to cross NYGEL between 9000 and 10000 and at 250K, then on track 064° to cross OTTOS at 6000 and at 210K. Expect ILS or RNAV RWY 5L/R approach.

LANDING RUNWAY 23L: From MALNR on track 052° to cross WISPY between 10000 and 12000 and at 280K, then on track 063° to cross CAKEY at 8000, then on track 092° to cross JODUS at or above 7000 and at 220K, then on track 092° to CHIRM, then on track 054° to cross KENCH at 6000 and at 210K, then on track 054°. Expect RNP RWY 23L approach. Non-RNP aircraft: Expect RADAR vectors to final approach course.

LANDING RUNWAY 23R: From MALNR on track 052° to cross WISPY between 10000 and 12000 and at 280K, then on track 063° to cross CAKEY at 8000, then on track 023° to cross FRETO at or above 7000 and at 220K, then on track 023° to ORENG, then on track 054° to cross GLEYS at 6000 and at 210K, then on track 054°. Expect RNP RWY 23R approach. Non-RNP aircraft: Expect RADAR vectors to final approach course.

MALNR FIVE ARRIVAL (RNAV)
(MALNR, MALNR5) 25FEB21

Arrival Routes

RALEIGH/DURHAM, NORTH CAROLINA
RALEIGH-DURHAM INTL (RDU)

(MALNR, MALNR5) 21056
MALNR FIVE ARRIVAL (RNAV)

AL-516 (FAA)
Arrival Routes

RALEIGH-DURHAM INTL (RDU)
RALEIGH/DURHAM, NORTH CAROLINA