


APP CRS	Rwy Idg	<b>7500</b>
<b>234°</b>	TDZE	<b>435</b>
	Apt Elev	<b>435</b>

# RNAV (RNP) Z RWY 23L

RALEIGH-DURHAM INTL (RDU)

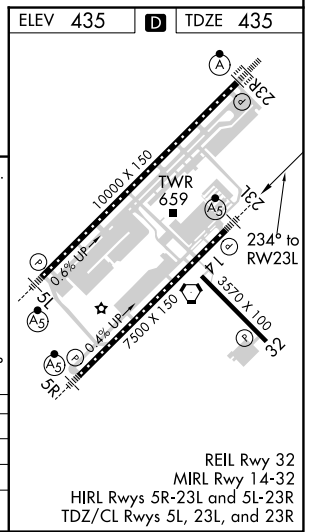
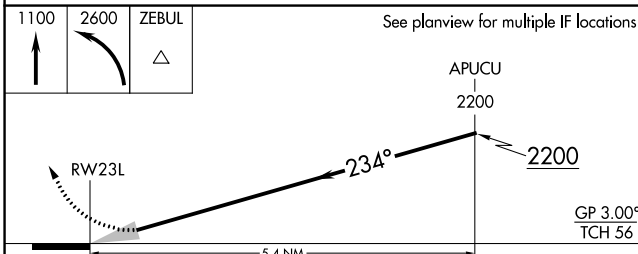
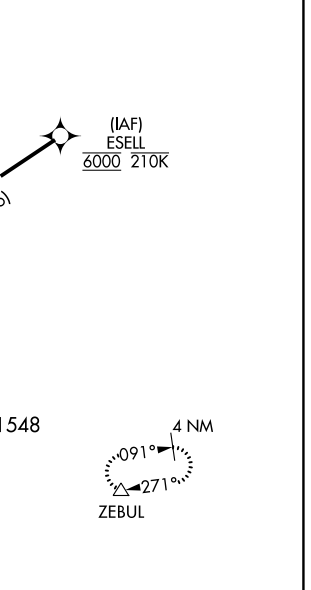
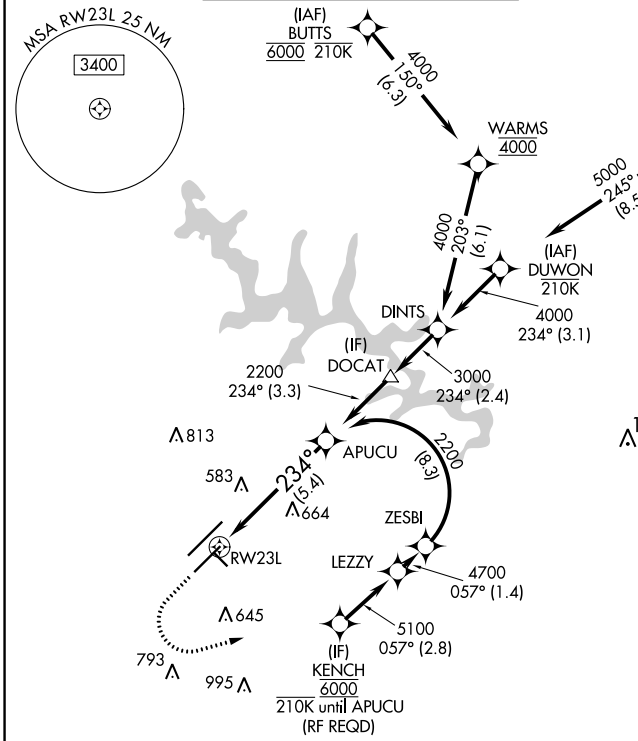
RNP AR APCH-GPS.




▼ For uncompensated Baro-VNAV systems, procedure NA below -12°C or above 54°C. Simultaneous approach authorized, except for arrivals at KENCH. For inop ALS, increase RNP 0.10 all Cats visibility to RVR 5500.

MALSR 

MISSED APPROACH: Climb to 1100 then climbing left turn to 2600 direct ZEBUL and hold.

D-ATIS	RALEIGH APP CON	(EAST) RALEIGH TOWER (WEST)	(EAST) GND CON (WEST)	CLNC DEL	CPDLC
<b>123.8</b>	<b>127.675 307.9</b>	<b>127.45 257.8</b> Rwys 5R-23L and 14-32	<b>119.3 257.8</b> Rwy 5L-23R	<b>121.9 348.6</b> Rwys 5R-23L and 14-32	<b>121.7 348.6</b> Rwy 5L-23R
				<b>120.1</b>	



1100	2600	ZEBUL	See planview for multiple IF locations.	
				
CATEGORY	A	B	C	D
RNP 0.10 DA		776/30 341 (400-%)		
RNP 0.30 DA		826/35 391 (400-%)		

## AUTHORIZATION REQUIRED

SE-2, 09 SEP 2021 to 07 OCT 2021

SE-2, 09 SEP 2021 to 07 OCT 2021