


APP CRS	Rwy Idg	10000
054°	TDZE	384
	Apt Elev	435

RNAV (RNP) Z RWY 5L

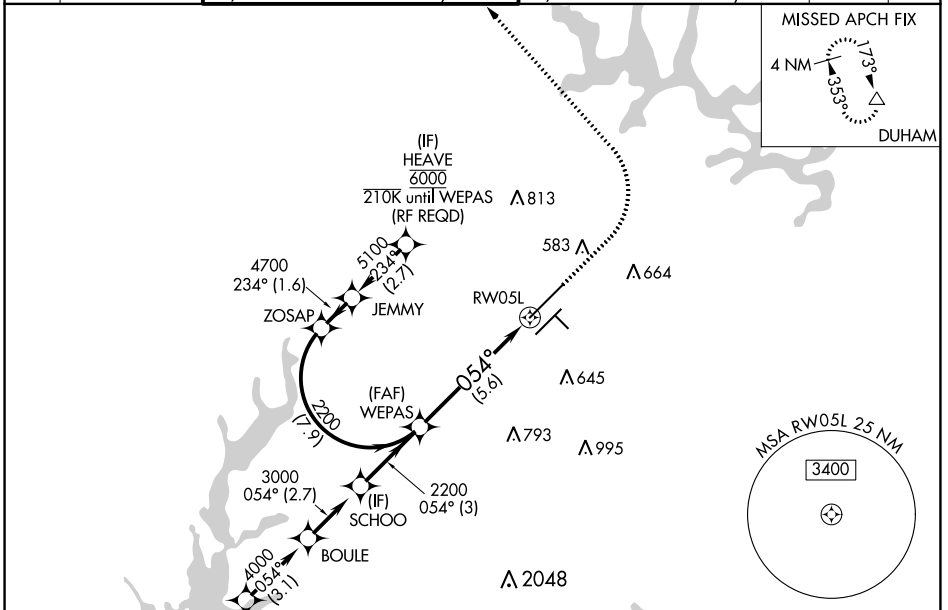
RALEIGH-DURHAM INTL (RDU)

RNP AR APCH-GPS.

MALSR  MISSED APPROACH:
Climb to 1000 then
climbing left turn to 2200
direct DUHAM and hold.

▼ For uncompensated Baro-VNAV systems, procedure NA below -12°C or above 54°C.
Simultaneous approach authorized, except for arrivals at HEAVE. For inop ALS, increase
RNP 0.10 all Cats visibility to RVR 4500.

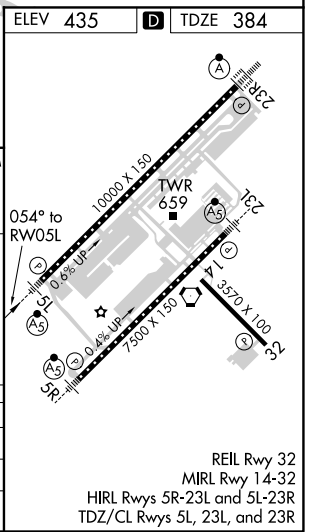
D-ATIS	RALEIGH APP CON	(EAST) RALEIGH TOWER (WEST)	(EAST) GND CON	(WEST)	CLNC DEL	CPDLC
123.8	127.675 307.9	127.45 257.8 Rwys 5R-23L and 14-32	119.3 257.8 Rwy 5L-23R	121.9 348.6 Rwys 5R-23L and 14-32	121.7 348.6 Rwy 5L-23R	120.1



SE-2, 09 SEP 2021 to 07 OCT 2021

SE-2, 09 SEP 2021 to 07 OCT 2021

ELEV 435	D TDZE 384
 <p>VGSi and RNAV glidepath not coincident (VGSi Angle 3.00/TCH 72).</p> <p>GP 3.00° TCH 57</p> <p>2200</p> <p>054°</p> <p>5.6 NM</p> <p>1000 2200 DUHAM</p> <p>See planview for multiple IF locations.</p>	



CATEGORY	A	B	C	D
RNP 0.10 DA		684/24	300 (300-½)	
RNP 0.30 DA		780/35	396 (400-⅙)	
AUTHORIZATION REQUIRED				

REIL Rwy 32
MIRL Rwy 14-32
HIRL Rwys 5R-23L and 5L-23R
TDZ/CL Rwys 5L, 23L, and 23R