

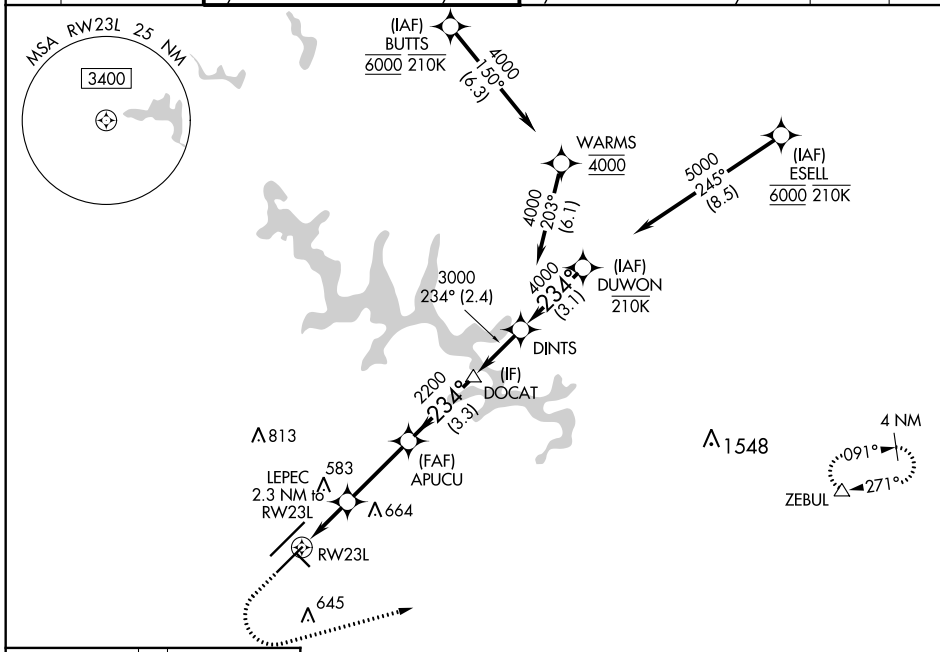
WAAS CH 65713 W23B	APP CRS 234°	Rwy Idg TDZE 435 Apt Elev 435	7500 435 435
--	------------------------	---	---

RNAV (GPS) Y RWY 23L

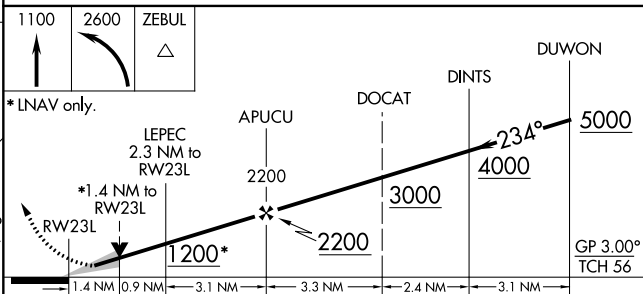
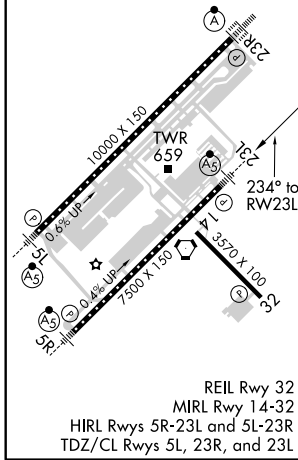
RALEIGH-DURHAM INTL (RDU)

RNP APCH-GPS.	MALSR	MISSED APPROACH: Climb to 1100 then climbing left turn to 2600 direct ZEBUL and hold.
<p>▼ Simultaneous approach authorized. LNAV procedure NA during simultaneous operations. For uncompensated Baro-VNAV systems, LNAV/VNAV NA below -1.2°C or above 5.4°C. Use of FD or AP required during simultaneous operations. For inop ALS, increase LNAV Cat C/D visibility to 1 3/8 SM.</p> <p>▲</p>		

D-ATIS	RALEIGH APP CON	(EAST) RALEIGH TOWER (WEST)	(EAST) GND CON (WEST)	CLNC DEL	CPDLC
123.8	127.675 307.9	127.45 257.8 119.3 257.8 Rwys 5R-23L and 14-32 Rwy 5L-23R	121.9 348.6 121.7 348.6 Rwys 5R-23L and 14-32 Rwy 5L-23R	120.1	



ELEV 435	TDZE 435
----------	----------



CATEGORY	A	B	C	D
LPV DA		635/18	200 (200-1/2)	
LNAV/VNAV DA		820/35	385 (400-5/8)	
LNAV MDA	920/24	485 (500-1/2)	920/50	485 (500-1)
CIRCLING	960-1	525 (600-1)	1020-1 1/2 585 (600-1 1/2)	1180-2 1/2 745 (800-2 1/2)

SE-2, 09 SEP 2021 to 07 OCT 2021

SE-2, 09 SEP 2021 to 07 OCT 2021