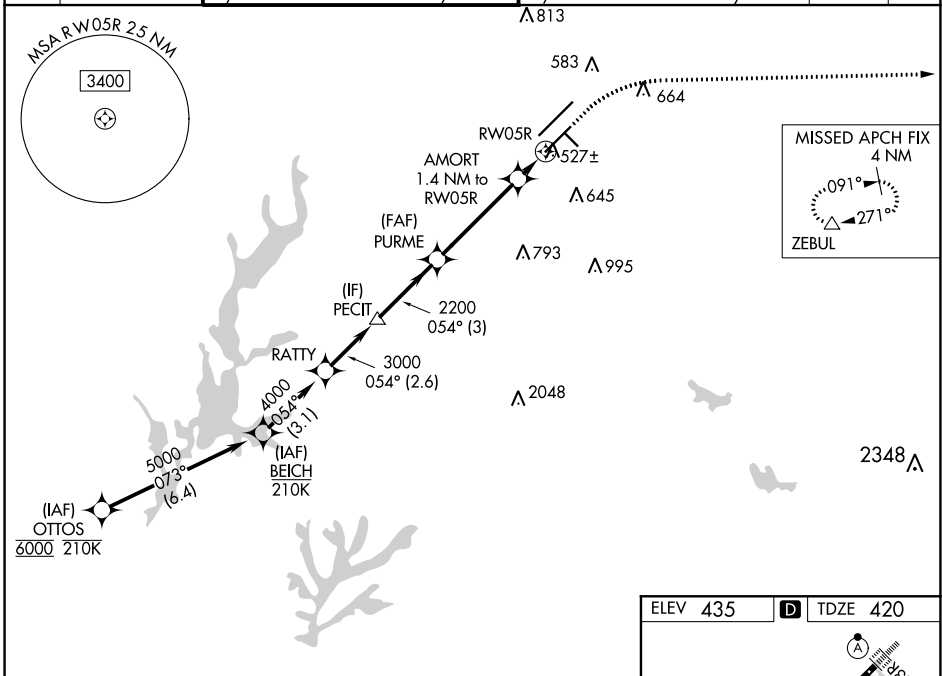


WAAS CH <b>90213</b> <b>W05B</b>	APP CRS <b>054°</b>	Rwy Idg <b>7500</b> TDZE <b>420</b> Apt Elev <b>435</b>
--	------------------------	---

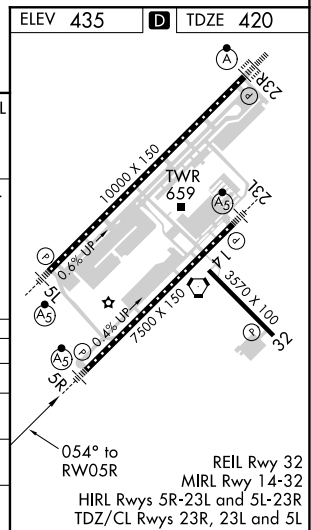
# RNAV (GPS) Y RWY 5R

RALEIGH-DURHAM INTL (RDU)

RNP APCH-GPS.		MISSED APPROACH: Climb to 1000 then climbing right turn to 2600 direct ZEBUL and hold.					
Simultaneous approach authorized. LNAV procedure NA during simultaneous operations. For uncompensated Baro-VNAV systems, LNAV/VNAV NA below -12°C or above 54°C. Use of FD or AP required during simultaneous operations. For inop ALS, increase LNAV/VNAV all Cats visibility to RVR 4500 and LNAV Cats C/D visibility to RVR 5500. # RVR 1800 authorized with use of FD or AP or HUD to DA.		MALSR 					
D-ATIS	RALEIGH APP CON	(EAST) RALEIGH TOWER <b>127.45 257.8</b> Rwys 5R-23L and 14-32	(WEST) <b>119.3 257.8</b> Rwy 5L-23R	(EAST) GND CON <b>121.9 348.6</b> Rwys 5R-23L and 14-32	(WEST) <b>121.7 348.6</b> Rwy 5L-23R	CLNC DEL <b>120.1</b>	CPDLC



BEICH 5000 GP 3.00° TCH 56		RATTY 4000 054°		PECIT 3000 054°		PURME 2200 054°		AMORT 1.4 NM to RWY 5R 900 *LNAV only.		1000 2600 ZEBUL	
3.1 NM		2.6 NM		3 NM		4.1 NM		1.4 NM			
CATEGORY	A	B		C		D					
LPV DA		#620/24		200 (200-½)							
LNAV/VNAV DA		688/24		268 (300-½)							
LNAV MDA	780/24	360 (400-½)		780/40		360 (400-¾)					
CIRCLING	960-1	525 (600-1)		1020-1½ 585 (600-1½)		1180-2½ 745 (800-2½)					



SE-2, 09 SEP 2021 to 07 OCT 2021

SE-2, 09 SEP 2021 to 07 OCT 2021