

TAQLE ONE ARRIVAL (RNAV) Transition Routes

RALEIGH APP CON
124.95 318.2
D-ATIS
123.8

- NOTE: RADAR required.
- NOTE: RNAV 1.
- NOTE: DME/DME/IRU or GPS required.
- NOTE: Turbojet aircraft only.
- NOTE: LANDING NORTHEAST: Use Rwy 5R transition.
Expect runway assignment from TRACON prior to TAQLE.
- NOTE: LANDING SOUTHWEST: Use Rwy 23L transition.
Expect runway assignment from TRACON prior to TAQLE.

TRPOD

ZJAAY

JAMIE

17000
240°
(33)

17000
240°
(27)

17000
240°
(27)

17000
240°
(18)

15000
239°
(17)

10000
233°
(14)

10000
233°
(14)

HOUKY
FL220

13000
214°
(11)

PILOE

13000
220°
(8)

AGUYA

13000
220°
(14)

DOYAS
17000

13000
220°
(14)

CEBET
FL230
FL220

MSBOX
13000

10000
222°
(22)

FL180

10000
239°
(52)

COUPN
FL230

DEMVE

10000
233°
(24)

GOLLI
FL200

15000
239°
(17)

BEETN
FL200
15000

10000
233°
(17)

DUFFI

10000
233°
(14)

(CONTINUED ON FOLLOWING PAGE)
(NARRATIVE ON FOLLOWING PAGE)

BOGPE TRANSITION (BOGPE.TAQLE1)
 COUPN TRANSITION (COUPN.TAQLE1)
 HOUKY TRANSITION (HOUKY.TAQLE1)
 TRPOD TRANSITION (TRPOD.TAQLE1)
 ZJAAY TRANSITION (ZJAAY.TAQLE1)

TAQLE
17000
10000

See following page
for Arrival Routes

NOTE: Chart not to scale.

SE-2, 09 SEP 2021 to 07 OCT 2021

SE-2, 09 SEP 2021 to 07 OCT 2021

TAQLE ONE ARRIVAL (RNAV) Transition Routes

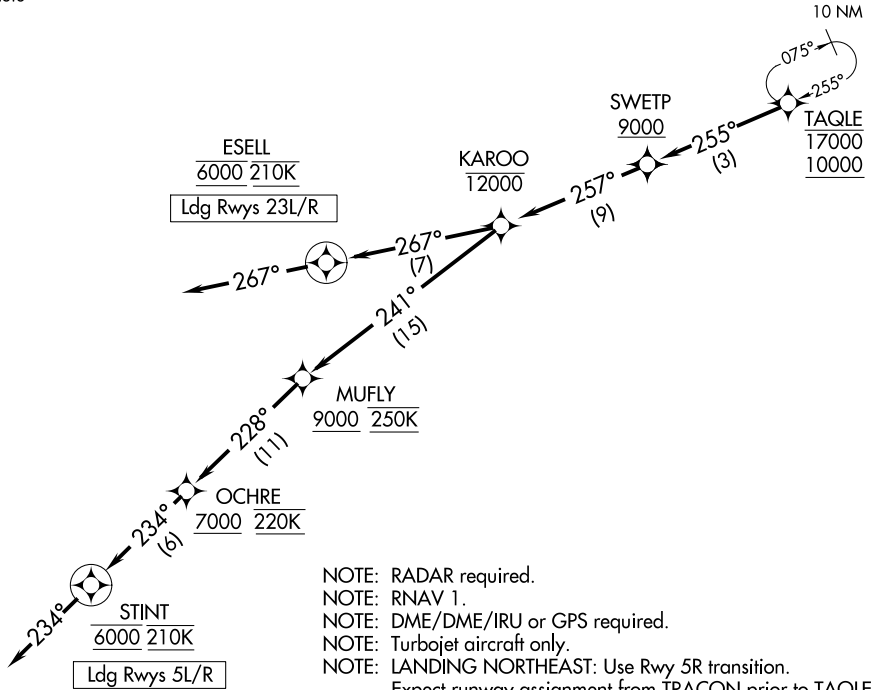
(TAQLE.TAQLE1) 21056

AL-516 (FAA)

TAQLE ONE ARRIVAL (RNAV) Arrival Routes

RALEIGH-DURHAM INTL (RDU)
RALEIGH/DURHAM, NORTH CAROLINA

RALEIGH APP CON
124.95 318.2
D-ATIS
123.8



- NOTE: RADAR required.
- NOTE: RNAV 1.
- NOTE: DME/DME/IRU or GPS required.
- NOTE: Turbojet aircraft only.
- NOTE: LANDING NORTHEAST: Use Rwy 5R transition. Expect runway assignment from TRACON prior to TAQLE.
- NOTE: LANDING SOUTHWEST: Use Rwy 23L transition. Expect runway assignment from TRACON prior to TAQLE.

NOTE: Chart not to scale.

ARRIVAL ROUTE DESCRIPTION

From TAQLE on track 255° to cross SWETP at or above 9000, then on track 257° to cross KAROO at or below 12000.

LANDING RUNWAYS 5L/R: From KAROO on track 241° to cross MUFLY at or above 9000 and at 250K, then on track 228° to cross OCHRE at or above 7000 and at 220K, then on track 234° to cross STINT at 6000 and at 210K, then on track 234°. Expect RNP RWY 5R approach. Non-RNP aircraft: Expect RADAR vectors to final approach course.

LANDING RUNWAYS 23L/R: From KAROO on track 267° to cross ESELL at 6000 and at 210K, then on track 267°. Expect ILS or RNAV RWY 23L/R approach.

TAQLE ONE ARRIVAL (RNAV) Arrival Routes
(TAQLE.TAQLE1) 25FEB21

RALEIGH/DURHAM, NORTH CAROLINA
RALEIGH-DURHAM INTL (RDU)

SE-2, 09 SEP 2021 to 07 OCT 2021

SE-2, 09 SEP 2021 to 07 OCT 2021