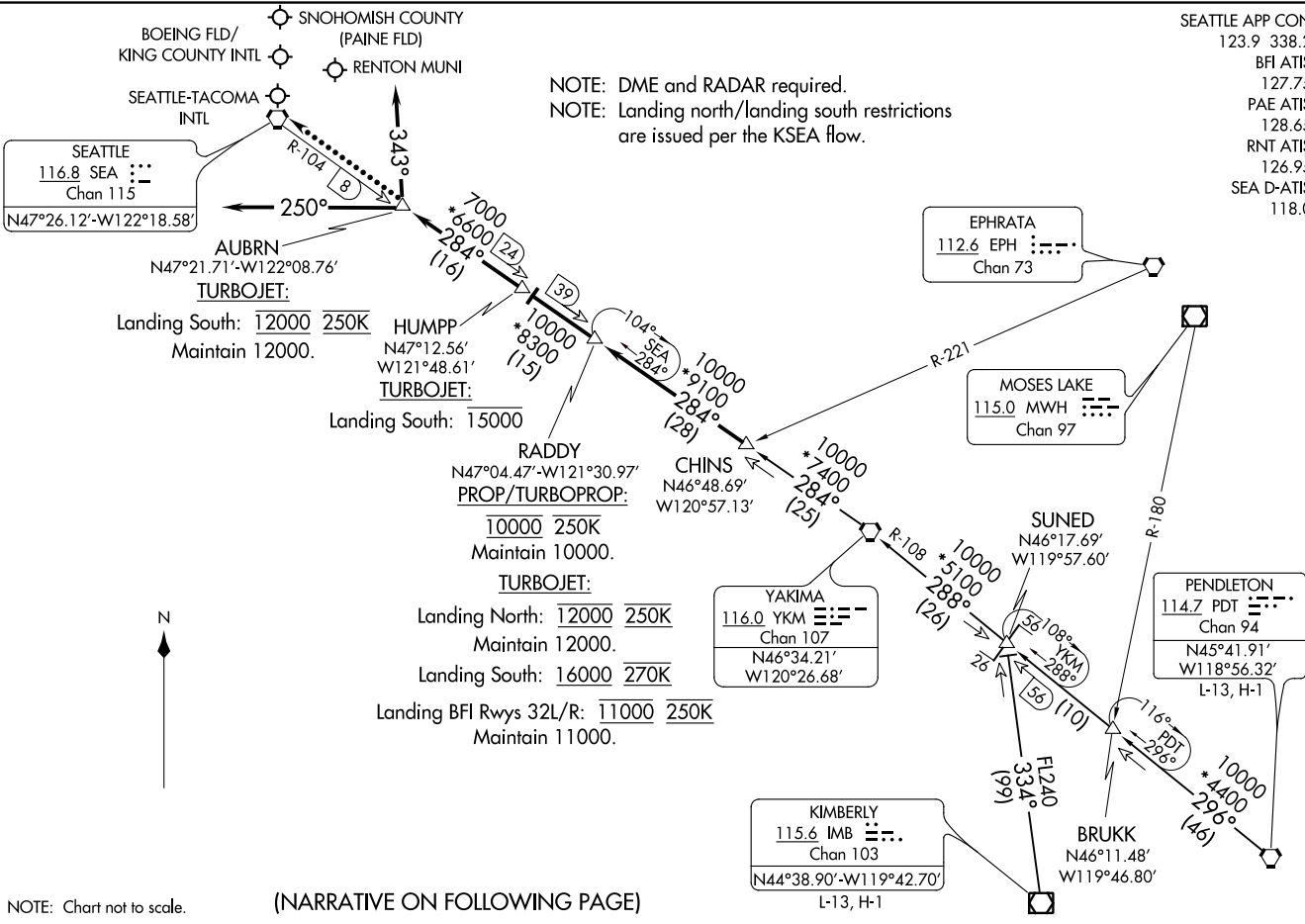


SEATTLE APP CON
123.9 338.2
BFI ATIS
127.75
PAE ATIS
128.65
RNT ATIS
126.95
SEA D-ATIS
118.0

NOTE: DME and RADAR required.
NOTE: Landing north/landing south restrictions
are issued per the KSEA flow.



NOTE: Chart not to scale.

(NARRATIVE ON FOLLOWING PAGE)

ARRIVAL ROUTE DESCRIPTION

KIMBERLY TRANSITION (IMB.CHINS4): From over IMB VOR/DME on IMB R-334 to SUNED, then on YKM R-108 to YKM VORTAC, then on YKM R-284 to CHINS, thence

PENDLETON TRANSITION (PDT.CHINS4): From over PDT VORTAC on PDT R-296 to SUNED, then on YKM R-108 to YKM VORTAC, then on YKM R-284 to CHINS, thence

SUNED TRANSITION (SUNED.CHINS4): From SUNED on YKM R-108 to YKM VORTAC, then on YKM R-284 to CHINS, thence

. . . . from CHINS on YKM R-284 and SEA R-104 to RADDY, then on SEA R-104 to HUMPP, then on SEA R-104 to AUBRN, thence

LANDING NORTH: Heading 250° for vectors to final approach course.

LANDING SOUTH: Heading 343° for vectors to final approach course.

LANDING RENTON MUNI: Heading 343° for vectors to final approach course.

LANDING SNOHOMISH COUNTY (PAINE FLD): Heading 343° for vectors to final approach course.

LOST COMMUNICATIONS: After AUBRN proceed direct SEA VORTAC.

NW-1, 09 SEP 2021 to 07 OCT 2021

NW-1, 09 SEP 2021 to 07 OCT 2021