

LOC I-TUN 109.9	APP CRS 274°	Rwy Idg TDZE Apt Elev	7201 770 782
---------------------------	------------------------	-----------------------------	---

ILS or LOC RWY 27

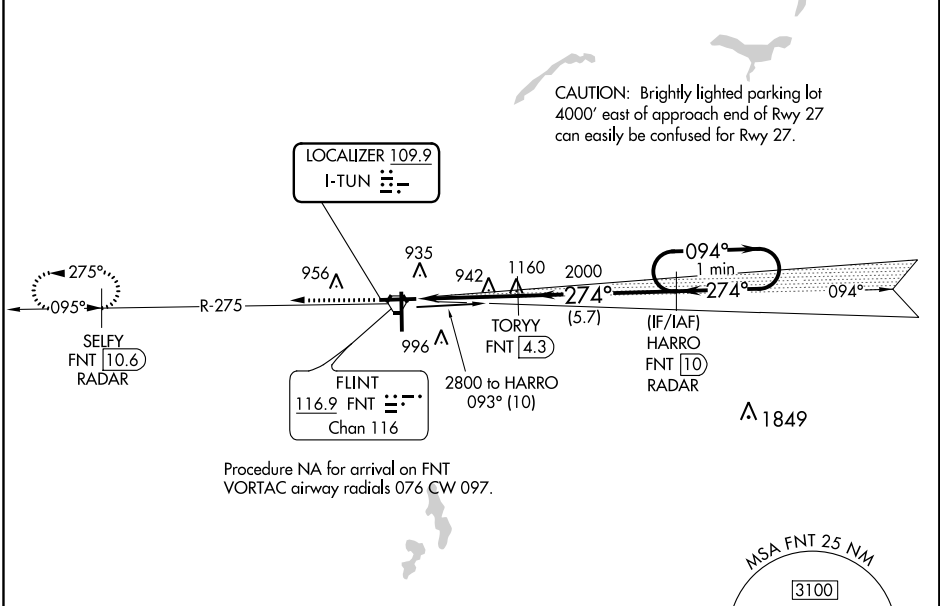
BISHOP INTL (F'NT)

DME or RADAR required for procedure entry. DME or RADAR required.

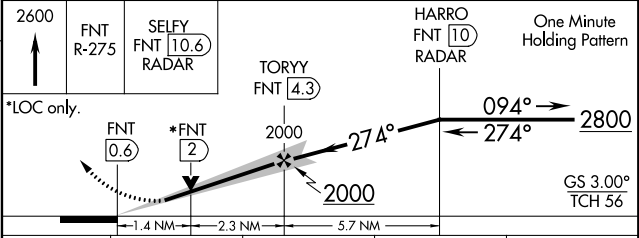
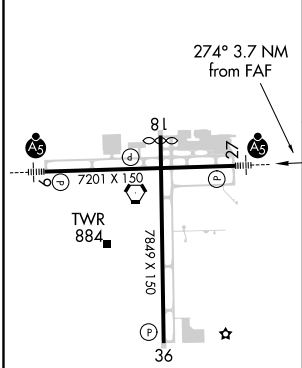
▽ DME from FNT VORTAC. Simultaneous reception of I-TUN and FNT DME required. For inop ALS, increase S-LOC 27 Cat A/B visibility to 1 SM, and Cat C/D visibility to 1½ SM.

MALSR  MISSED APPROACH: Climb to 2600 on FNT VORTAC R-275 direct SELFY/FNT VORTAC 10.6 DME/RADAR and hold.

ATIS 133.15	GREAT LAKES APP CON ★ 118.8 257.9	FLINT TOWER ★ 126.3 (CTAF) 0257.9	GND CON 121.9	CLNC DEL 121.75	UNICOM 122.95
-----------------------	---	---	-------------------------	---------------------------	-------------------------



ELEV 782	D	TDZE 770
----------	----------	----------



CATEGORY	A	B	C	D
S-ILS 27	970-½ 200 (200-½)			
S-LOC 27	1260-½	490 (500-½)	1260-1	490 (500-1)
C CIRCLING	1260-1 478 (500-1)	1300-1 518 (600-1)	1300-1½ 518 (600-1½)	1520-2¼ 738 (800-2¼)

EC-1, 09 SEP 2021 to 07 OCT 2021

EC-1, 09 SEP 2021 to 07 OCT 2021