

LOC I-FNT 109.9	APP CRS 094°	Rwy Idg 7201
		TDZE 771
		Apt Elev 782

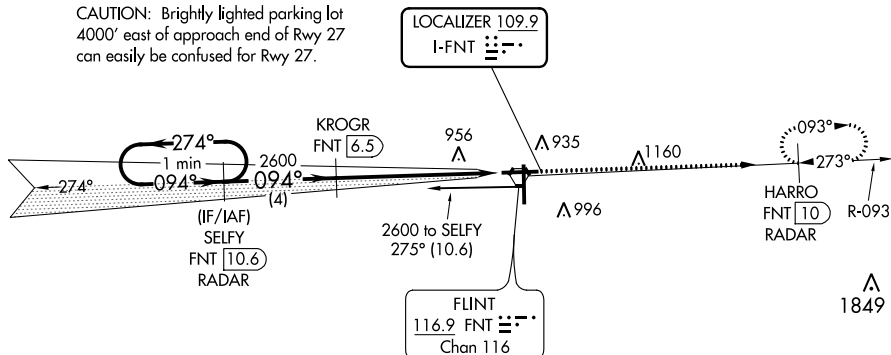
ILS or LOC RWY 9

BISHOP INTL (F'NT)

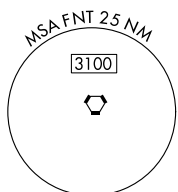
DME or RADAR required for procedure entry. DME or RADAR required.		MALSR 	MISSED APPROACH: Climb to 3000 on FNT VORTAC R-093 to HARRO/FNT VORTAC 10 DME/RADAR and hold.
	DME from FNT VORTAC. Simultaneous reception of I-FNT and FNT DME required. For inop ALS, increase S-LOC 9 Cat C/D visibility to 1 3/8 SM. ** RVR 1800 authorized with use of FD or AP or HUD to DA.		

ATIS 133.15	GREAT LAKES APP CON * 118.8 257.9	FLINT TOWER * 126.3 (CTAF) 257.9	GND CON 121.9	CLNC DEL 121.75	UNICOM 122.95
-----------------------	---	--	-------------------------	---------------------------	-------------------------

CAUTION: Brightly lighted parking lot 4000' east of approach end of Rwy 27 can easily be confused for Rwy 27.

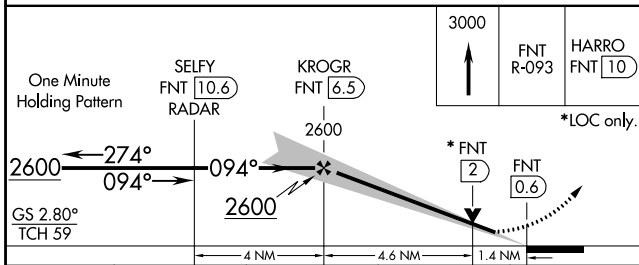


Procedure NA for arrival on FNT VORTAC airway radials 234 CW 286.

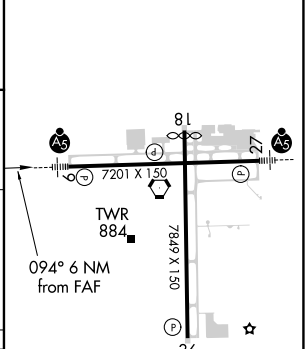


EC-1, 09 SEP 2021 to 07 OCT 2021

EC-1, 09 SEP 2021 to 07 OCT 2021



ELEV 782	D TDZE 771
----------	-------------------



CATEGORY	A	B	C	D
S-ILS 9 **	971/24 200 (200-1/2)			
S-LOC 9	1280/24	509 (500-1/2)	1280/55	509 (500-1)
C CIRCLING	1280-1 498 (500-1)	1300-1 518 (600-1)	1300-1 1/2 518 (600-1 1/2)	1520-2 1/4 738 (800-2 1/4)

HIRL Rwys 9-27 and 18-36 REIL Rwy 18 and 36	FAF to MAP 6 NM				
Knots	60	90	120	150	180
Min:Sec	6:00	4:00	3:00	2:24	2:00