

WAAS CH 99514 W18A	APP CRS 185°	Rwy Idg 7648 TDZE 777 Apt Elev 782
----------------------------------------	------------------------	---------------------------------------------------------------

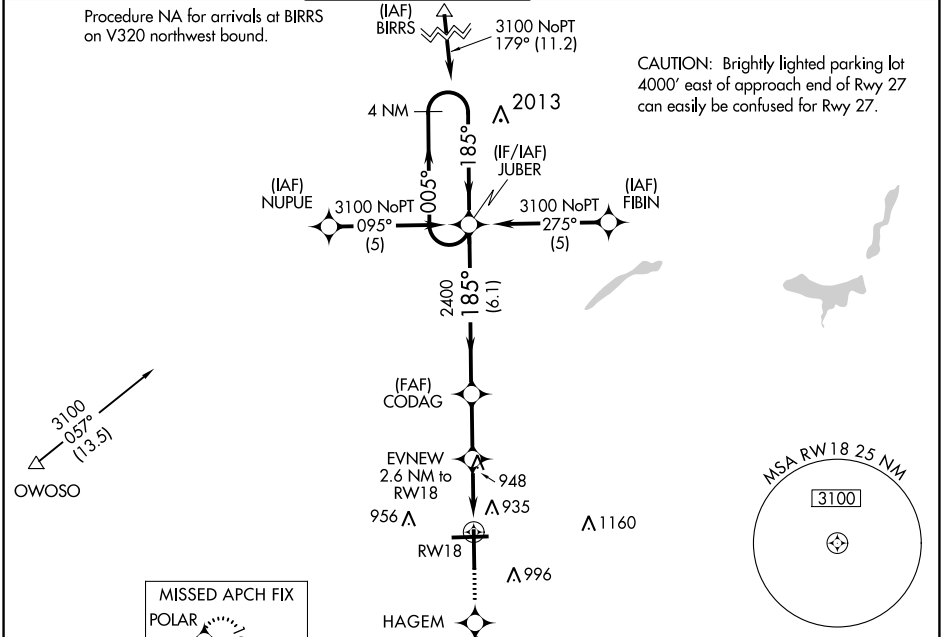
RNAV (GPS) RWY 18

BISHOP INTL (FNT)

⚠ For uncompensated Baro-VNAV systems, LNAV/VNAV NA below -16°C (4°F) or above 47°C (116°F). DME/DME RNP-0.3 NA.
⚠ Rwy 18 helicopter visibility reduction below 3/4 SM NA.

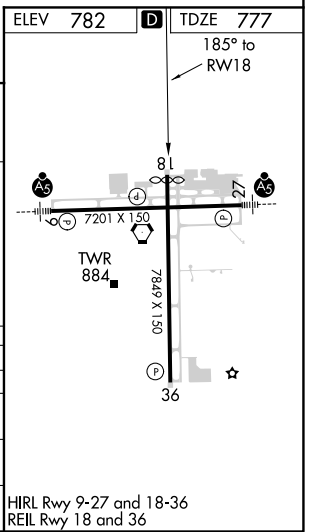
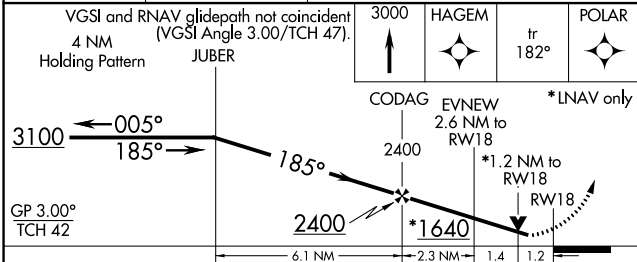
MISSED APPROACH: Climb to 3000 direct HAGEM and on track 182° to POLAR and hold.

ATIS 133.15	GREAT LAKES APP CON * 118.8 257.9	FLINT TOWER * 126.3 (CTAF) 257.9	GND CON 121.9	CLNC DEL 121.75	UNICOM 122.95
-----------------------	---------------------------------------------	--------------------------------------------	-------------------------	---------------------------	-------------------------



CAUTION: Brightly lighted parking lot 4000' east of approach end of Rwy 27 can easily be confused for Rwy 27.

ELEV 782	TDZE 777
185° to RW18	



CATEGORY	A	B	C	D
LPV DA		1109-1¼	333 (400-1¼)	
LNAV/VNAV DA		1253-1¾	477 (500-1¾)	
LNAV MDA	1220-1	443 (500-1)	1220-1¾	443 (500-1¾)
CIRCLING	1300-1	518 (600-1)	1300-1½	1520-2¼
			518 (600-1½)	738 (800-2¼)

HIRL Rwy 9-27 and 18-36
 REIL Rwy 18 and 36

EC-1, 09 SEP 2021 to 07 OCT 2021

EC-1, 09 SEP 2021 to 07 OCT 2021