

WAAS CH <b>45714</b> <b>W09A</b>	APP CRS <b>094°</b>	Rwy Idg TDZE Apt Elev	<b>7201</b> <b>771</b> <b>782</b>
--	------------------------	-----------------------------	---

# RNAV (GPS) RWY 9

BISHOP INTL (F'NT)

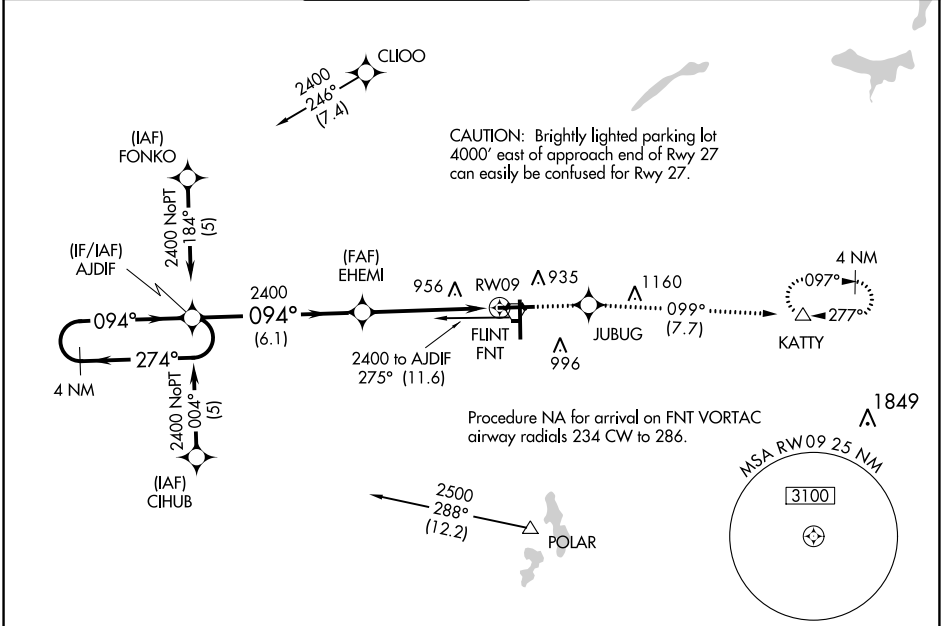


For uncompensated Baro-VNAV systems, LNAV/VNAV NA below -16°C (4°F) or above 54°C (130°F). DME/DME RNP-0.3 NA. For inop ALS, increase LNAV Cat C/D visibility to 1 3/8 SM.  
 \*\*RVR 1800 authorized with use of FD or AP or HUD to DA.



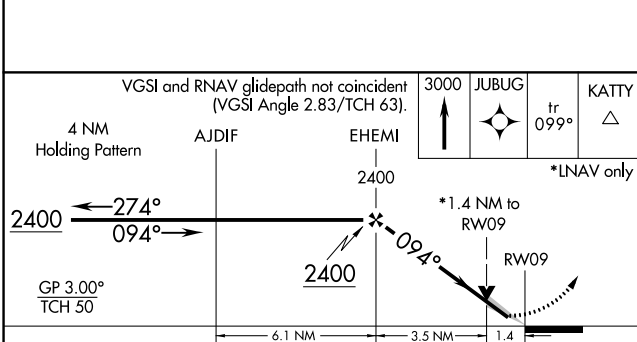
MISSED APPROACH: Climb to 3000 direct JUBUG and on track 099° to KATY and hold.

ATIS <b>133.15</b>	GREAT LAKES APP CON * <b>118.8 257.9</b>	FLINT TOWER * <b>126.3 (CTAF) 257.9</b>	GND CON <b>121.9</b>	CLNC DEL <b>121.75</b>	UNICOM <b>122.95</b>
-----------------------	---	--	-------------------------	---------------------------	-------------------------



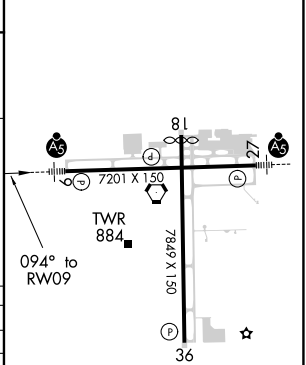
EC-1, 09 SEP 2021 to 07 OCT 2021

EC-1, 09 SEP 2021 to 07 OCT 2021



ELEV 782	<b>D</b> TDZE 771
----------	-------------------

CATEGORY	A	B	C	D
LPV DA **	971/24		200 (200-1/2)	
LNAV/DA VNAV	1227/50		456 (500-1)	
LNAV MDA	1260/24 489 (500-1/2)		1260/50 489 (500-1)	
<b>C</b> CIRCLING	1260-1 478 (500-1)	1300-1 518 (600-1)	1300-1 1/2 518 (600-1 1/2)	1520-2 1/4 738 (800-2 1/4)



HIRL Rwys 9-27 and 18-36  
REL Rwy 18 and 36