

VORTAC FNT 116.9 Chan 116	APP CRS 196°	Rwy Idg TDZE 777 Apt Elev 782
---	------------------------	---

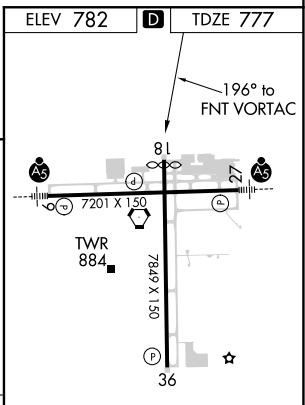
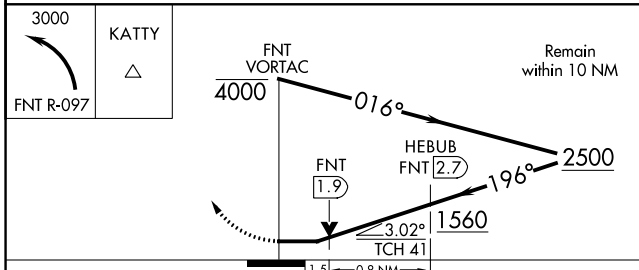
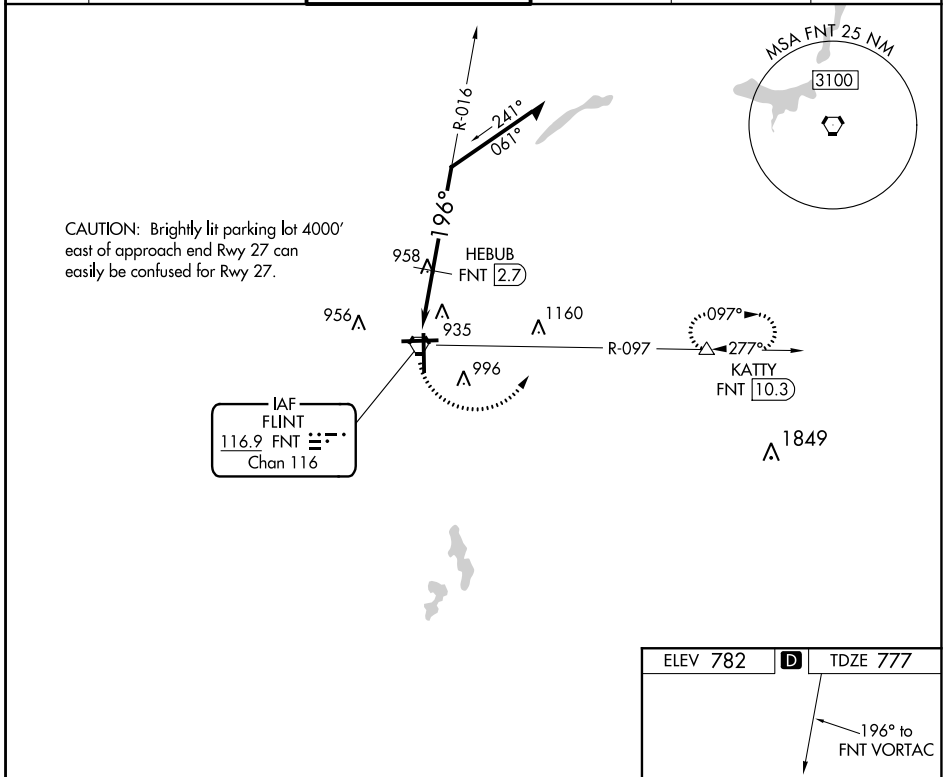
VOR RWY 18

BISHOP INTL (FNT)

⚠ Rwy 18 helicopter visibility reduction below 3/4 SM NA.
⚠ DME required.

MISSED APPROACH: Climbing left turn to 3000 on FNT VORTAC R-097 to KATTY/10.3 DME and hold.

ATIS 133.15	GREAT LAKES APP CON * 118.8 257.9	FLINT TOWER * 126.3 (CTAF) 257.9	GND CON 121.9	CLNC DEL 121.75	UNICOM 122.95
-----------------------	---	--	-------------------------	---------------------------	-------------------------



CATEGORY	A	B	C	D
S-18	1300-1 523 (600-1)		1300-1½ 523 (600-1½)	1300-1¾ 523 (600-1¾)
C CIRCLING	1300-1 518 (600-1)		1300-1½ 518 (600-1½)	1520-2¼ 738 (800-2¼)

HIRL Rws 9-27 and 18-36
REL Rwy 18 and 36

EC-1, 09 SEP 2021 to 07 OCT 2021

EC-1, 09 SEP 2021 to 07 OCT 2021