

LOC/DME I-ZK 109.9 Chan 36	APP CRS 225°	Rwy Idg 7501 TDZE 933 Apt Elev 962
--	------------------------	---

ILS or LOC RWY 22

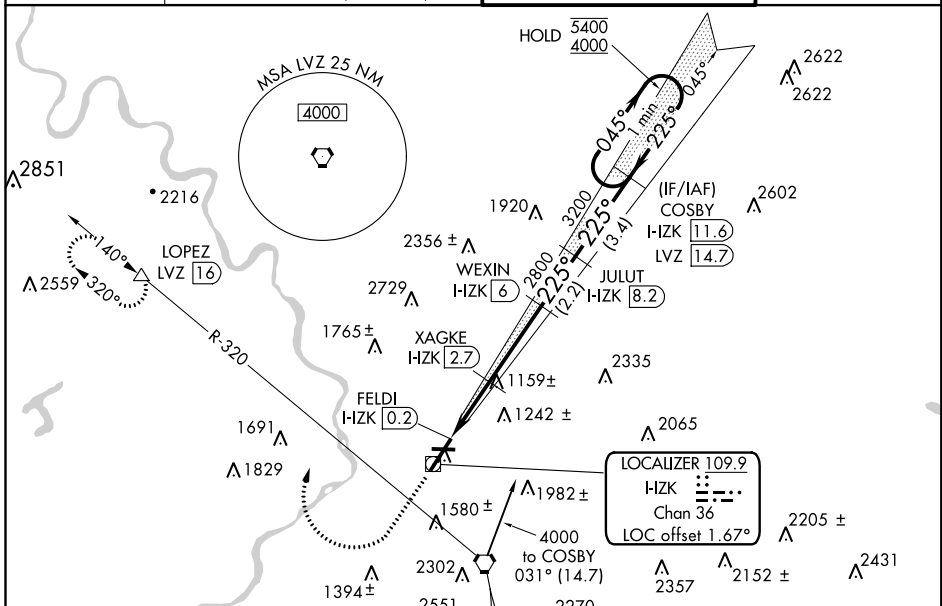
WILKES-BARRE/SCRANTON INTL (AVP)

RADAR or DME required for procedure entry. DME required.

▲ Circling NA for Cats C and D southeast of Rwy 4-22.
▲ Circling Rwy 28 NA at night.
 When local altimeter setting not received, procedure NA.

MISSED APPROACH: Climb to 1900 then climbing right turn to 4000 on heading 330° and LVZ VORTAC R-320 to LOPEZ/LVZ 16 DME and hold.

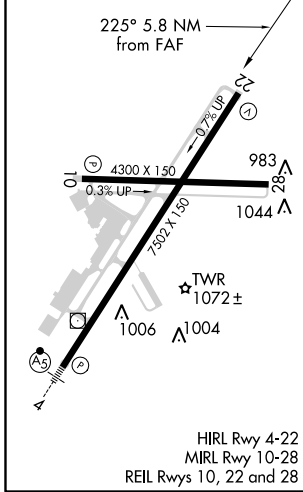
ATIS 111.6	WILKES-BARRE APP CON 120.95 256.7 126.3 256.7 (101°-279°)	WILKES-BARRE TOWER 120.1 257.8	GND CON 121.9
----------------------	---	--	-------------------------



NE-4, 09 SEP 2021 to 07 OCT 2021

NE-4, 09 SEP 2021 to 07 OCT 2021

ELEV 962	D	TDZE 933
----------	----------	----------



1900	4000	LOPEZ	VGSI and ILS glidepath not coincident (VGSI Angle 3.00/TCH 54).		One Minute Holding Pattern
↑	hdg 330°	LVZ R-320	JULUT I-ZK [8.2]	COSBY I-ZK [11.6]	
* LOC only.					
	XAGKE I-ZK [2.7]	WEXIN I-ZK [6]			
	FELDI I-ZK [0.2]	* I-ZK [1.6]	* 1740	2800	3200
	1.4 NM	1.1	3.3 NM	2.2 NM	3.4 NM
CATEGORY	A	B	C	D	
S-ILS 22		1201/45	268 (300-7%)		
S-LOC 22	1420/55	487 (500-1)	1420-1 ³ / ₈	487 (500-1 ³ / ₈)	
C CIRCLING	1840-1 ¹ / ₄ 878 (900-1 ¹ / ₄)	1980-1 ¹ / ₂ 1018 (1100-1 ¹ / ₂)	1980-3 1018 (1100-3)	2280-3 1318 (1400-3)	