

WAAS CH 69213 W22A	APP CRS 224°	Rwy Idg 7501 TDZE 933 Apt Elev 962
--	------------------------	---

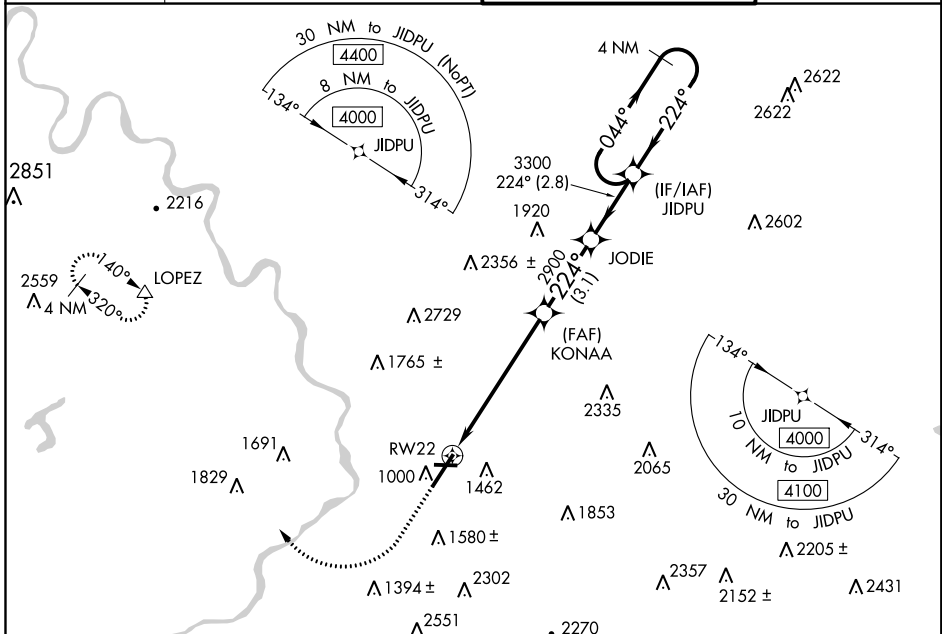
RNAV (GPS) RWY 22

WILKES-BARRE/SCRANTON INTL (AVP)

⚠ Night landing: Rwy 10, 28 NA. For uncompensated Baro-VNAV systems, LNAV/VNAV NA below -17°C (2°F) or above 54°C (130°F). When local altimeter setting not received, procedure NA. Circling NA for Cats C and D southeast of Rwy 4-22. DME/DME RNP-0.3 NA.

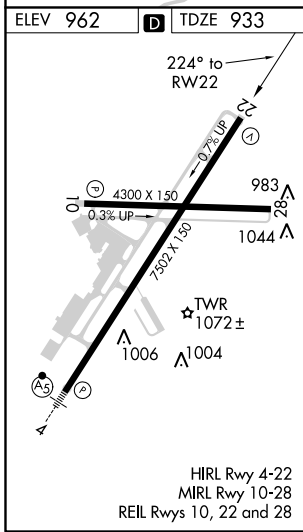
⚠ MISSED APPROACH: Climb to 1900 then climbing right turn to 4000 direct LOPEZ and hold.

ATIS 111.6	WILKES-BARRE APP CON 120.95 256.7 (280°-100°) 126.3 256.7 (101°-279°)	WILKES-BARRE TOWER 120.1 257.8	GND CON 121.9
----------------------	---	--	-------------------------



NE-4, 09 SEP 2021 to 07 OCT 2021

NE-4, 09 SEP 2021 to 07 OCT 2021



1900	4000	LOPEZ	VGSI and RNAV glidepath not coincident (VGSI Angle 3.00/TCH 54).	4 NM Holding Pattern
*LNAV only.		KONAA 2900	JODIE	JIDPU
*1.8 NM to RW22		2900	3300	4000
1.8 NM		4.3 NM	3.1 NM	2.8 NM
CATEGORY	A	B	C	D
LPV DA		1178/40	245 (200-¾)	
LNAV/VNAV DA		1392-1½	459 (500-1½)	
LNAV MDA	1500/55	567 (600-1)	1500-1¾	567 (600-1¾)
CIRCLING	1840-1¼	1980-1½	1980-3	2280-3
	878 (900-1¼)	1018 (1100-1½)	1018 (1100-3)	1318 (1400-3)