

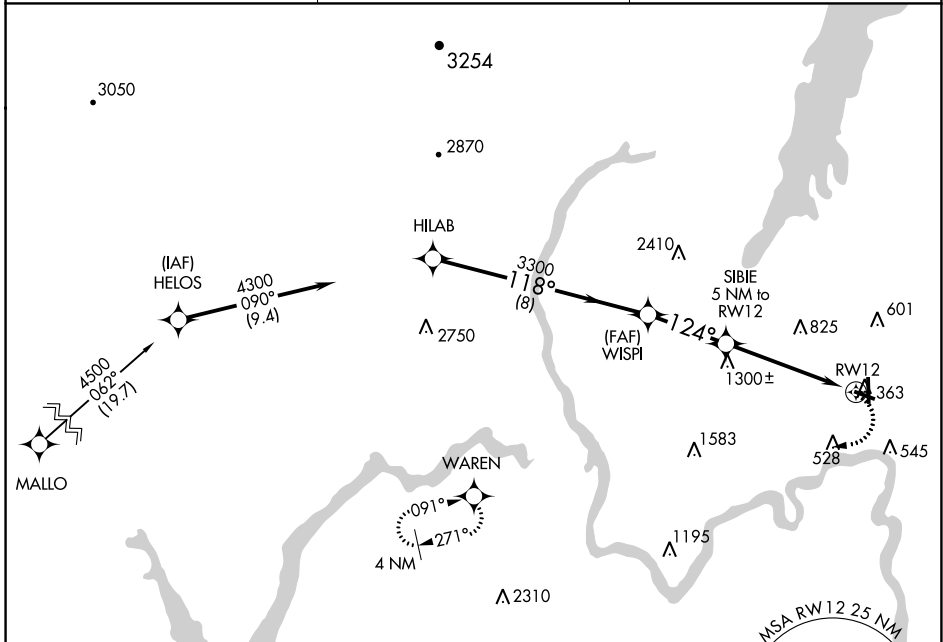
APP CRS	Rwy Idg	3999
124°	TDZE	328
	Apt Elev	328

RNAV (GPS) RWY 12

FLOYD BENNETT MEML (GFL)

NA -19°C	DME/DME RNP-0.3 NA. Helicopter visibility reduction below 1 SM NA. Night landing: Rwy 12, 30 NA.	MISSED APPROACH: Climbing right turn to 4000 direct to WAREN WP and hold.
-------------	--	---

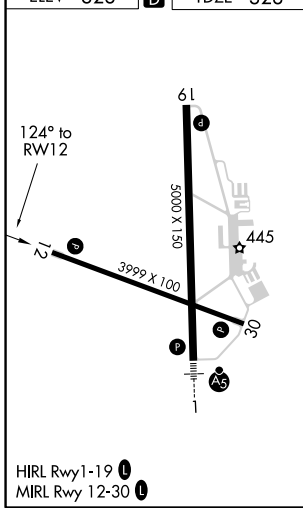
ASOS 119.925	ALBANY APP CON 132.825 307.2	UNICOM 123.0 (CTAF)
------------------------	--	-------------------------------



NE-2, 09 SEP 2021 to 07 OCT 2021

NE-2, 09 SEP 2021 to 07 OCT 2021

ELEV 328		TDZE 328
----------	--	----------



HIRL Rwy 1-19
MIRL Rwy 12-30

HILAB Procedure Turn NA 4300 8 NM WISPI 3300 3 NM SIBIE 5 NM to RWY 12 2200 5 NM RWY 12	VGSI and descent angles not coincident (VGSI Angle 3.85/TCH 55). 3.47° TCH 45		4000	WAREN
	CATEGORY A B C D	LNAV MDA 1560-1¼ 1232 (1300-1¼)	1560-1½ 1232 (1300-1½)	1560-3 1232 (1300-3)
CIRCLING 1560-1¼ 1232 (1300-1¼)	1560-1½ 1232 (1300-1½)	1560-3 1232 (1300-3)		