

# RNAV (GPS) RWY 2

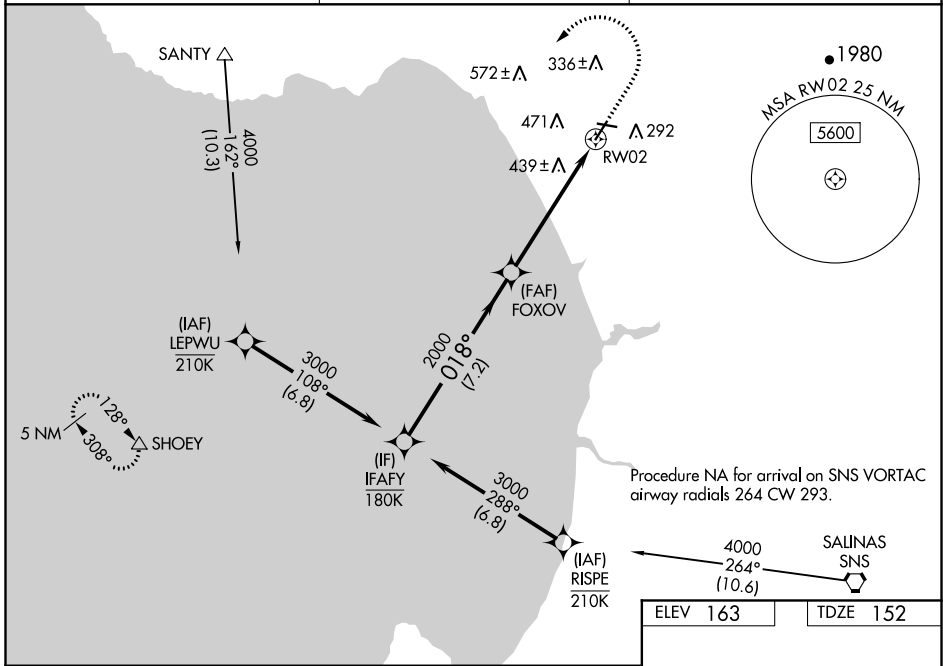
WATSONVILLE MUNI (WVI)

WAAS CH <b>50144</b> <b>W02A</b>	APP CRS <b>018°</b>	Rwy Ldg TDZE <b>152</b> Apt Elev <b>163</b>	<b>4501</b>
--	------------------------	---	-------------

RNP APCH.  
 ⚠ Circling Rwy 27 NA at night. Rwy 2 helicopter visibility reduction below 3/4 SM NA. For uncompensated Baro-VNAV systems, LNAV/VNAV NA below -2°C or above 54°C. Circling NA west of Rwy 2-20.

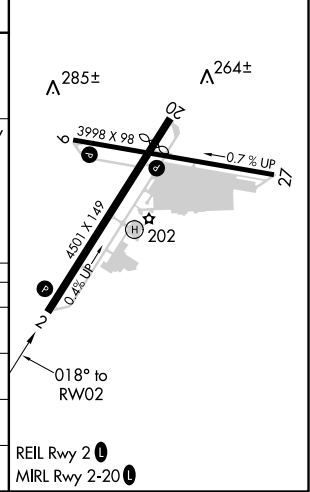
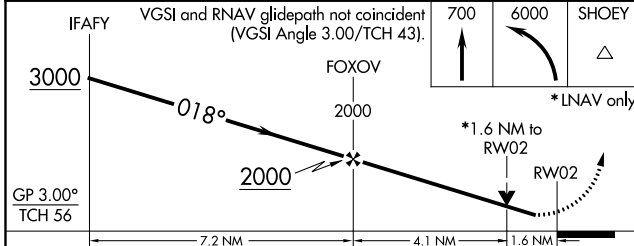
MISSED APPROACH: (Do not exceed 185K until SHOEY) Climb to 700 then climbing left turn to 6000 direct SHOEY and hold, continue climb-in-hold to 6000.

ASOS <b>132.275</b>	NORCAL APP CON <b>127.15 307.125</b>	UNICOM <b>122.8 (CTAF)</b>
------------------------	---	-------------------------------



Procedure NA for arrival on SNS VORTAC airway radials 264 CW 293.

ELEV 163	TDZE 152
----------	----------



CATEGORY	A	B	C	D
LPV DA	448-7/8 296 (300-7/8)			
LNNAV/VNAV DA	772-1 3/4 620 (700-1 3/4)			
LNNAV MDA	700-1 548 (600-1)	700-1 5/8 548 (600-1 5/8)		
CIRCLING	700-1 537 (600-1)	700-1 5/8 537 (600-1 5/8)		1100-3 937 (1000-3)

SW-2, 09 SEP 2021 to 07 OCT 2021

SW-2, 09 SEP 2021 to 07 OCT 2021