

HI-TACAN RWY 5L

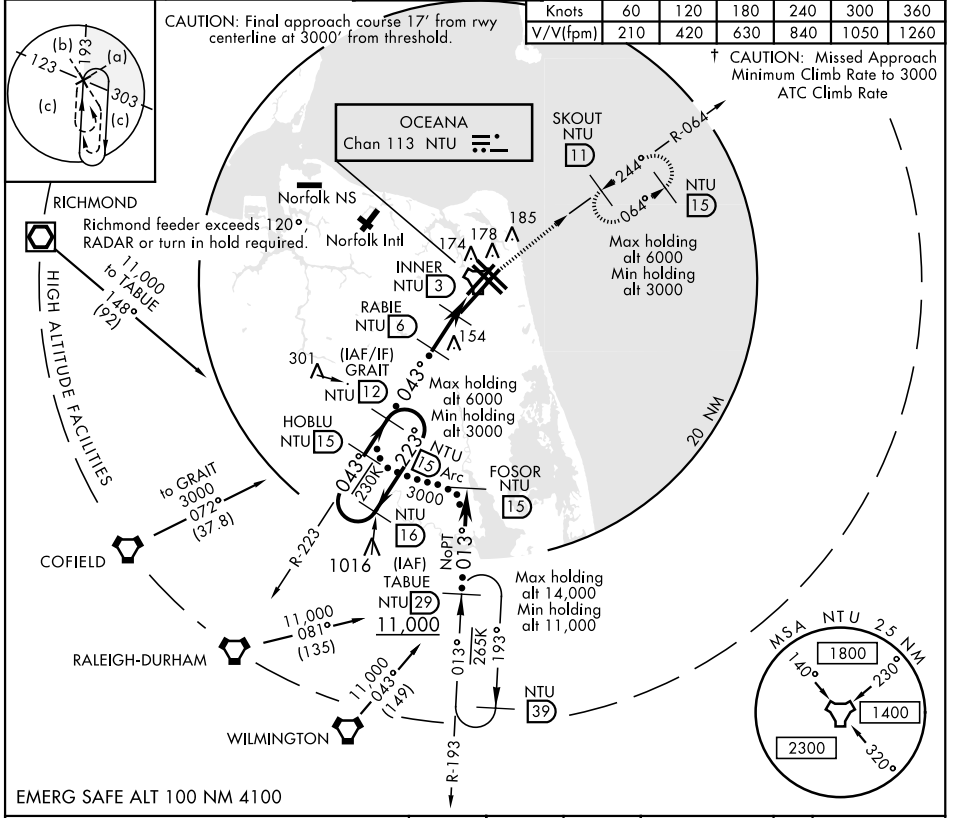
TACAN NTU Chan 113	APCH CRS 043°	Rwy Idg 8000 TDZE 20 Arprt Elev 22	JAL-934 [USN]	OCEANA NAS (APOLLO SOUCEK FIELD) (KNTU)
-----------------------	------------------	---	---------------	---

† MISSED APPROACH: Climb to 3000 via R-223 to NTU TACAN and via R-064 to SKOUT and hold.

ATIS 317.6	APP CON 123.9 266.8	OCEANA TOWER 127.075 360.2	GND CON 119.6 336.4	CLNC DEL 254.4	ASR/ PAR
---------------	------------------------	-------------------------------	------------------------	-------------------	-------------

Knots	60	120	180	240	300	360
	V/V(fpm)	210	420	630	840	1050

† CAUTION: Missed Approach Minimum Climb Rate to 3000 ATC Climb Rate



EMERG SAFE ALT 100 NM 4100

CATEGORY	C	D	E
	S-5L	440-1½	420 (500-1½)
CIRCLING	640-1¾ 618 (700-1¾)	640-2 618 (700-2)	900-3 878 (900-3)

ELEV	22	TDZE	20
------	----	------	----

HOBLU R-223	GRAIT	RABIE	INNER	TACAN
16	12	6	3	
223°	043°	043°	043°	043° to TACAN
3000	1600	740		
		3 NM	1.7	0.7

WEVKU	176
170	

HIRL all Rwy
Wave-Off Lgt all Rwy

HI-TACAN RWY 5L

NE-3, 09 SEP 2021 to 07 OCT 2021

NE-3, 09 SEP 2021 to 07 OCT 2021