

VIRGINIA BEACH, VIRGINIA


20254

RNAV (GPS) RWY 32L/R

APCH CRS 325°	Rwy Idg	32L	32R
	TDZE	8000	8001
	Arpt Elev	22	21

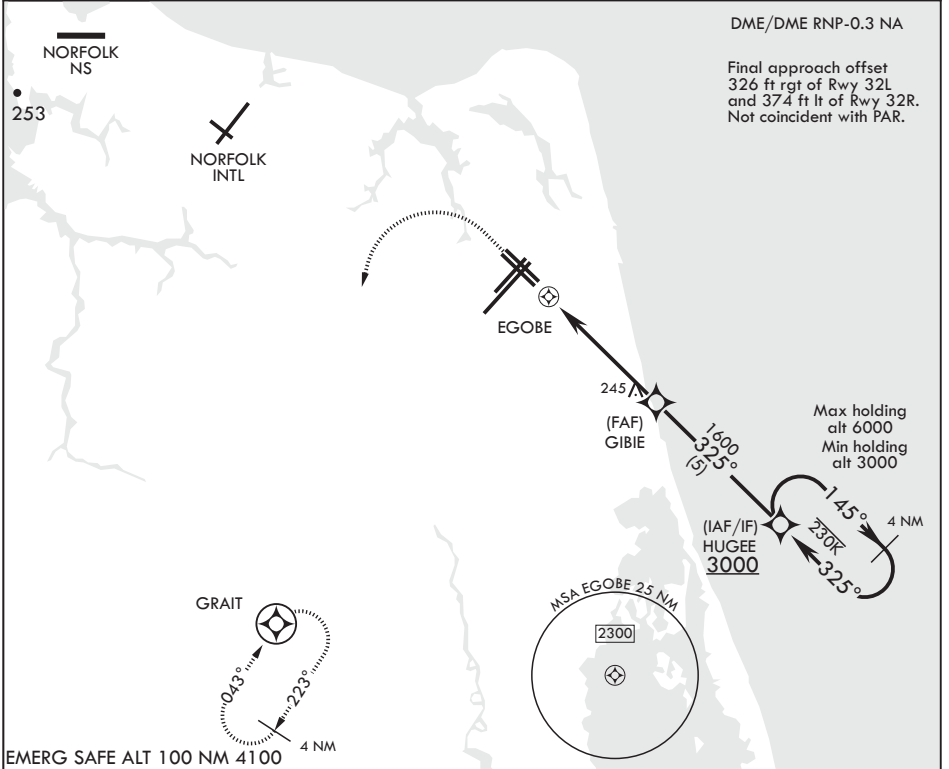
AL-934 (USN) OCEANA NAS (APOLLO SOUCEK FLD) (KNTU)

▼ * When ALS inop increase CAT AB vis to 1 mile, CAT CD vis to 1 1/8 miles.

Rwy 32L
ALSF-1


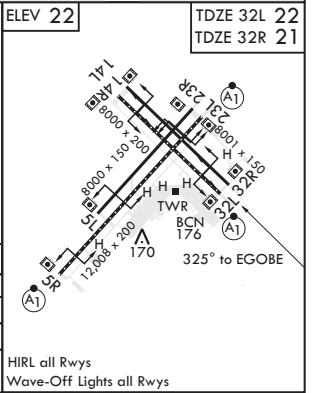
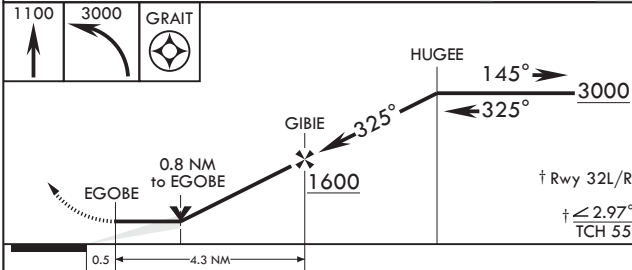
MISSED APPROACH: Climbing 1100 then climbing left turn to 3000 direct GRAIT and hold.

ATIS 317.6	OCEANA APP CON 123.9 266.8	TOWER 127.075 360.2	GND CON 119.6 336.4	CLNC DEL 254.4	ASR/PAR
---------------	-------------------------------	------------------------	------------------------	-------------------	---------



NE-3, 09 SEP 2021 to 07 OCT 2021

NE-3, 09 SEP 2021 to 07 OCT 2021



0.5	4.3 NM			
CATEGORY	A	B	C	D
LNAV MDA	480-1	459 (500-1)	480-1 ³ / ₈	459 (500-1 ³ / ₈)
LNAV MDA*	480-1 ¹ / ₂	458 (500-1 ¹ / ₂)	480-7 ¹ / ₈	458 (500-7 ¹ / ₈)
CIRCLING	500-1	478 (500-1)	640-1 ³ / ₄ 618 (700-1 ³ / ₄)	640-2 618 (700-2)

VIRGINIA BEACH, VIRGINIA 36°49'N - 76°02'W OCEANA NAS (APOLLO SOUCEK FLD) (KNTU)
 Amdt 2 03JAN19 **RNAV (GPS) RWY 32L/R**