

VIRGINIA BEACH, VIRGINIA

# RNAV (GPS) RWY 5R

WAAS CH <b>69870</b> W05B	APCH CRS <b>052°</b>	Rwy ldg TDZE Arprt Elev	<b>12,008</b> <b>19</b> <b>22</b>
---------------------------------	-------------------------	-------------------------------	---

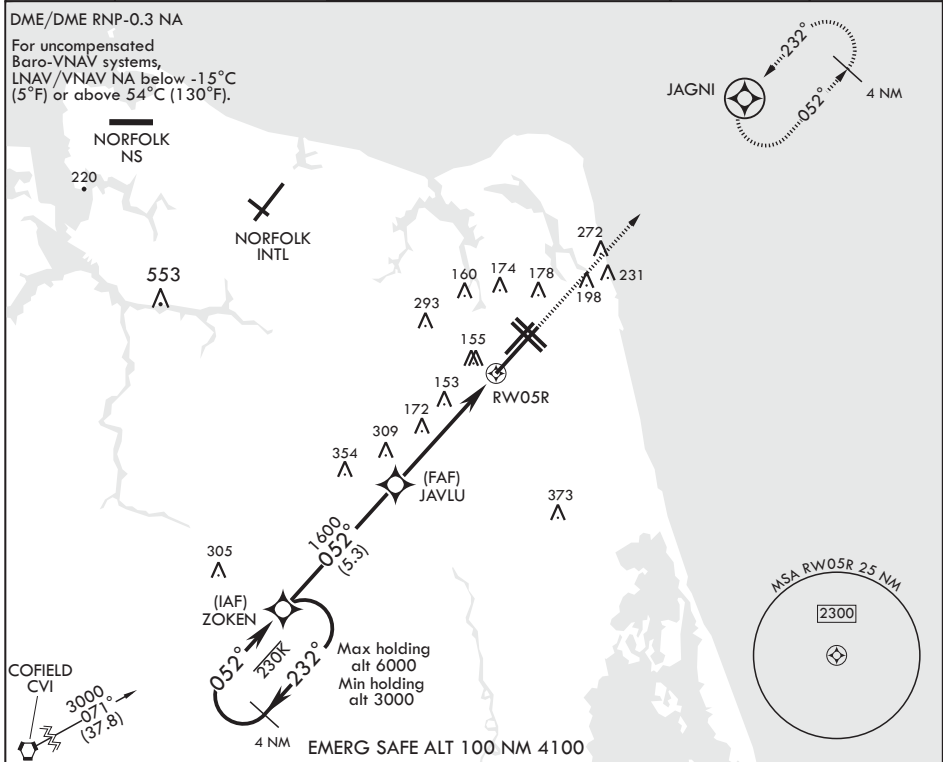
AL-934 (USN) OCEANA NAS (APOLLO SOUCEK FLD) (KNTU)

**▽** \* When ALS inop, increase CAT AB vis to 1 mile, CAT CD vis to 1 3/8 miles.



**MISSED APPROACH:** Climb to 3000 direct JAGNI and hold. Continue climb in hold to 3000.

ATIS <b>317.6</b>	OCEANA APP CON <b>123.9 266.8</b>	TOWER <b>127.075 360.2</b>	GND CON <b>119.6 336.4</b>	CLNC DEL <b>254.4</b>	ASR/PAR
----------------------	--------------------------------------	-------------------------------	-------------------------------	--------------------------	---------



NE-3, 09 SEP 2021 to 07 OCT 2021

NE-3, 09 SEP 2021 to 07 OCT 2021

3000 ← 232°		ZOKEN		Glidepath not coincident with PAR.		3000 ↑ JAGNI		ELEV 22		TDZE 19	
3000 → 052°		ZOKEN		JAVLU		† LNAV only					
		ZOKEN		JAVLU		† 1.2 NM to RWY05R					
		ZOKEN		JAVLU		4.7 NM					
GP 3.04°											
TCH 55											
CATEGORY	A	B	C	D							
LPV DA*	219-1/2		200	(200-1/2)							
LNAV/VNAV DA*	341-5/8		322	(400-5/8)							
LNAV MDA*	460-1/2	441 (500-1/2)	460-3/8	441 (500-3/8)							
CIRCLING	500-1	478 (500-1)	640-1 3/4	640-2							
			618 (700-1 3/4)	618 (700-2)							

VIRGINIA BEACH, VIRGINIA  
Amdt 3 03JAN19

36°49'N - 76°02'W OCEANA NAS (APOLLO SOUCEK FLD) (KNTU)

# RNAV (GPS) RWY 5R