

TACAN RWY 23L/R

TACAN NTU Chan 113	APCH CRS 244°	Rwy ldg 23L 12,008 23R 8000 TDZE 23L 21 23R 21 Arprt Elev 22
------------------------------	-------------------------	---

AL-934 [USN]

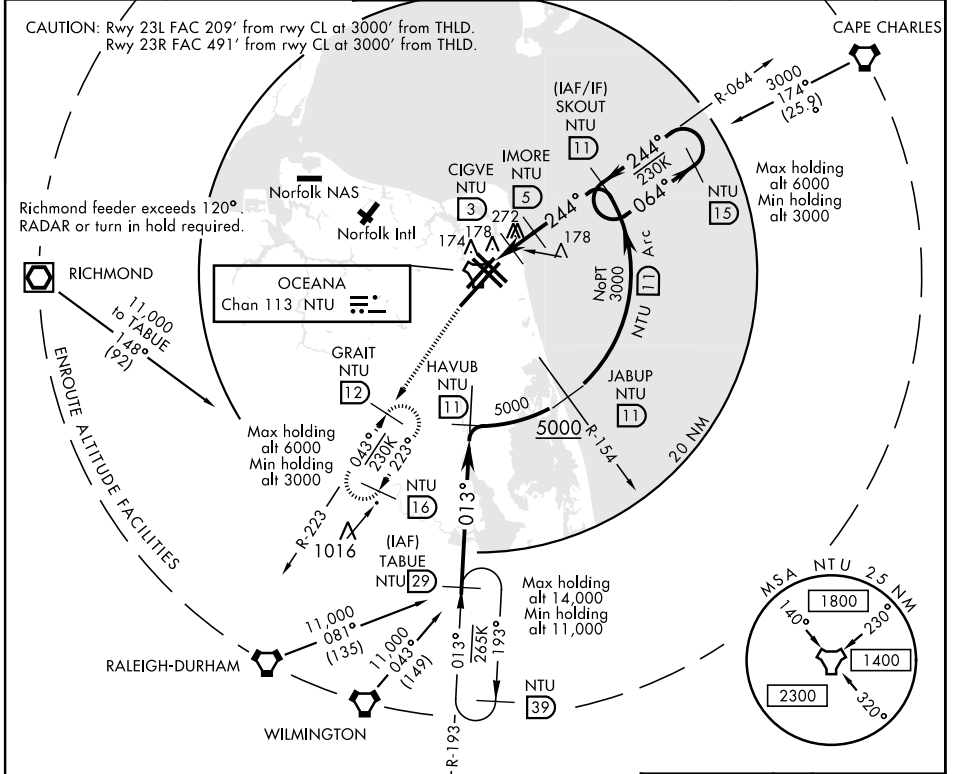
OCEANA NAS (APOLLO SOUCEK FIELD) (KNTU)

⚠ * When ALS inop, increase CAT AB vis to 1 mile, CAT CD vis to 1¼ miles.

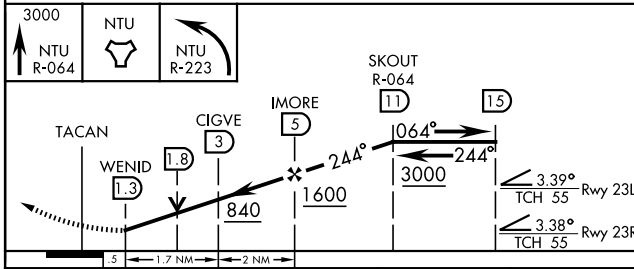


MISSED APPROACH: Climb to 3000 via R-064 to NTU TACAN and via R-223 to GRAIT and hold.

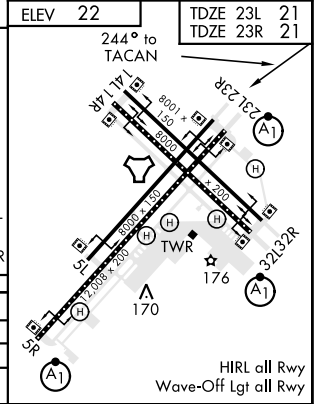
ATIS 317.6	APP CON 123.9 266.8	OCEANA TOWER 127.075 360.2	GND CON 119.6 336.4	CLNC DEL 254.4	ASR/ PAR
----------------------	-------------------------------	--------------------------------------	-------------------------------	--------------------------	-------------



EMERG SAFE ALT 100 NM 4100



CATEGORY	A	B	C	D
S-23L*		460-¾	439 (500-¾)	
S-23R	460-1	439 (500-1)	460-1¼	439 (500-1¼)
CIRCLING	500-1	478 (500-1)	640-1¾ 618 (700-1¾)	640-2 618 (700-2)



TACAN RWY 23L/R

NE-3, 09 SEP 2021 to 07 OCT 2021

NE-3, 09 SEP 2021 to 07 OCT 2021

HIRL all Rwy
Wave-Off Lgt all Rwy