

VIRGINIA BEACH, VIRGINIA

TACAN RWY 32L/R

TACAN NTU Chan 113	APCH CRS 309°	Rwy ldg 32L 8000 32R 8001
		TDZE 32L 22 32R 21
		Arprt Elev 22

AL-934 [USN]

OCEANA NAS (APOLLO SOUCEK FIELD) (KNTU)

* When ALS inop, increase CAT AB vis to 1 mile, CAT CDE vis to 1 1/4 miles.

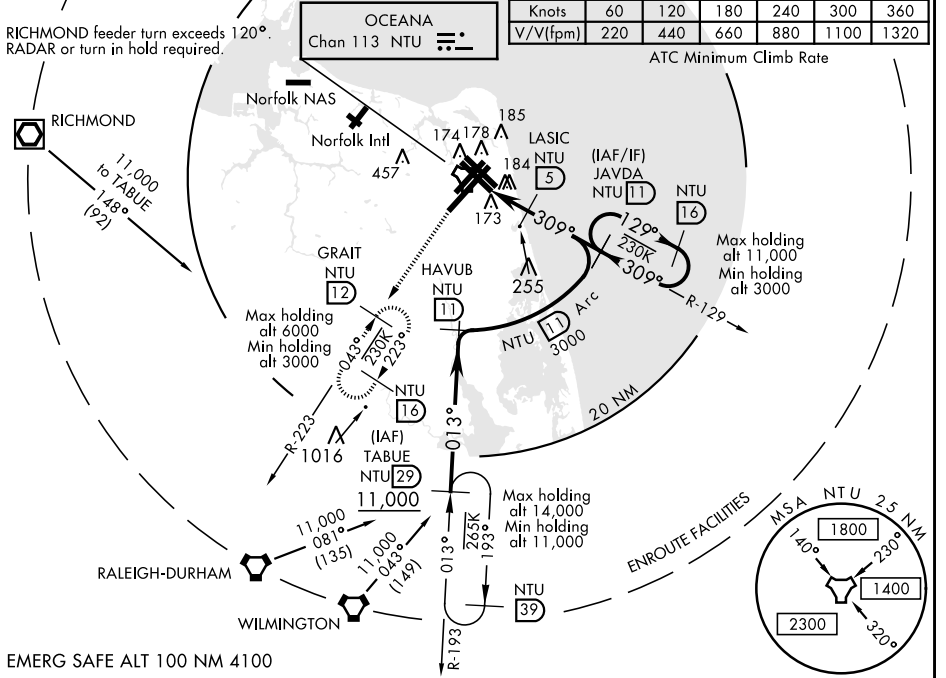
 † MISSED APPROACH: Climbing left turn to 3000, intercept NTU TACAN R-223 to GRAIT and hold.

ATIS 317.6	APP CON 123.9 266.8	OCEANA TOWER 127.075 360.2	GND CON 119.6 336.4	CLNC DEL 254.4	ASR/PAR
------------	---------------------	----------------------------	---------------------	----------------	---------

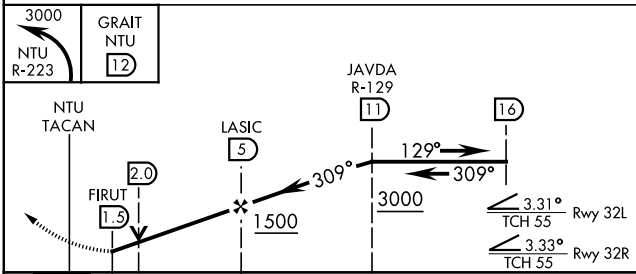
CAUTION: Rwy 32L FAC 171' from rwy CL at 3000' from THLD.
 Rwy 32R FAC 529' from rwy CL at 3000' from THLD.

† CAUTION: Missed Approach Minimum Climb Rate to 3000

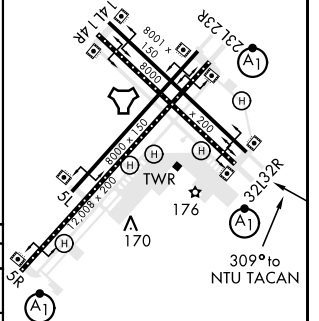
RICHMOND feeder turn exceeds 120°. RADAR or turn in hold required.



EMERG SAFE ALT 100 NM 4100



ELEV 22	TDZE 32L 22
	TDZE 32R 21



CATEGORY	A	B	C	D	E
S-32L *	460-1/2	438 (500-1/2)	460-3/4	438	(500-3/4)
S-32R	460-1	439 (500-1)	460-1 1/4	439	(500-1 1/4)
CIRCLING	500-1	478 (500-1)	640-1 1/4 618 (700-1 1/4)	640-2 618 (700-2)	900-3 878 (900-3)

HIRL all Rwy
Wave-Off lgt all Rwy

VIRGINIA BEACH, VIRGINIA

36° 49' N-76° 02' W

OCEANA NAS (APOLLO SOUCEK FIELD) (KNTU)

Amtd 4 03JAN19

TACAN RWY 32L/R

NE-3, 09 SEP 2021 to 07 OCT 2021

NE-3, 09 SEP 2021 to 07 OCT 2021