

# TACAN RWY 5L

TACAN NTU Chan <b>113</b>	APCH CRS <b>043°</b>	Rwy Idg 8000
		TDZE 20
		Arprt Elev 22

AL-934 [USN] OCEANA NAS (APOLLO SOUCEK FIELD) (KNTU)

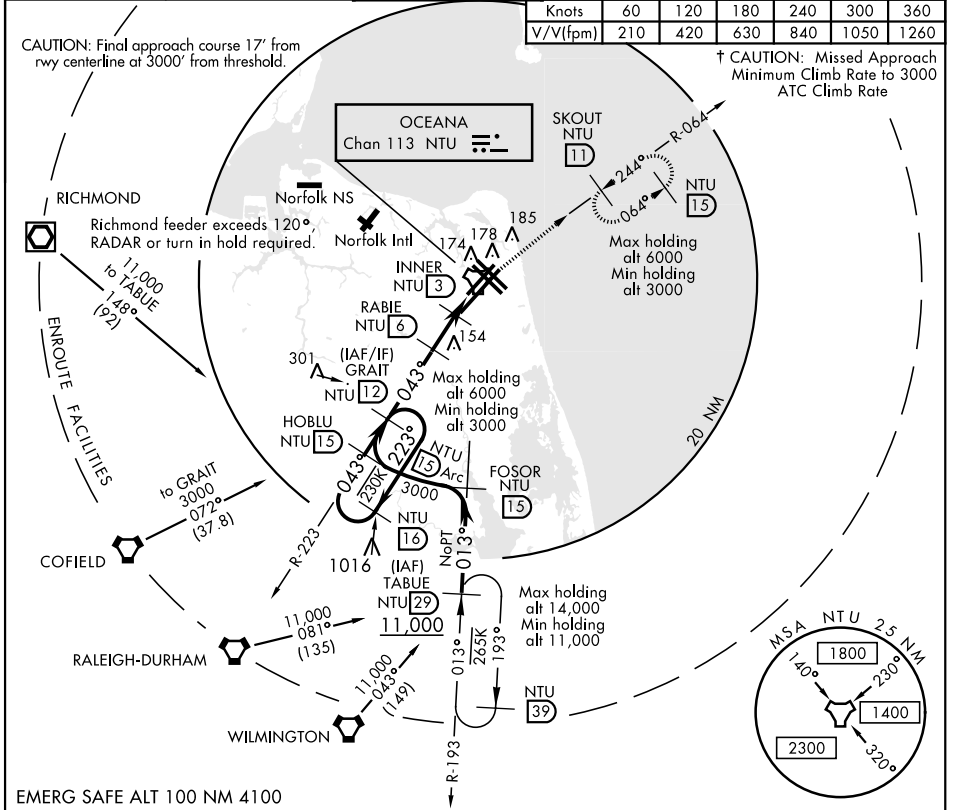
† MISSED APPROACH: Climb to 3000 via R-223 to NTU TACAN and via R-064 to SKOUT and hold.

ATIS <b>317.6</b>	APP CON <b>123.9 266.8</b>	OCEANA TOWER <b>127.075 360.2</b>	GND CON <b>119.6 336.4</b>	CLNC DEL <b>254.4</b>	ASR/ PAR
----------------------	-------------------------------	--------------------------------------	-------------------------------	--------------------------	-------------

Knots	60	120	180	240	300	360
V/V(fpm)	210	420	630	840	1050	1260

CAUTION: Final approach course 17° from rwy centerline at 3000' from threshold.

† CAUTION: Missed Approach Minimum Climb Rate to 3000 ATC Climb Rate



NE-3, 09 SEP 2021 to 07 OCT 2021

NE-3, 09 SEP 2021 to 07 OCT 2021

EMERG SAFE ALT 100 NM 4100

	3000	NTU	NTU	ELEV 22	TDZE 20
	↑ R-223	NTU	NTU		
CATEGORY	A	B	C	D	
S-5L	440-1	420 (500-1)	440-1 1/8	420 (500-1 1/8)	
CIRCLING	500-1	478 (500-1)	640-1 3/4 618 (700-1 3/4)	640-2 618 (700-2)	

# TACAN RWY 5L

HIRL all Rwy  
Wave-Off Lgt all Rwy