

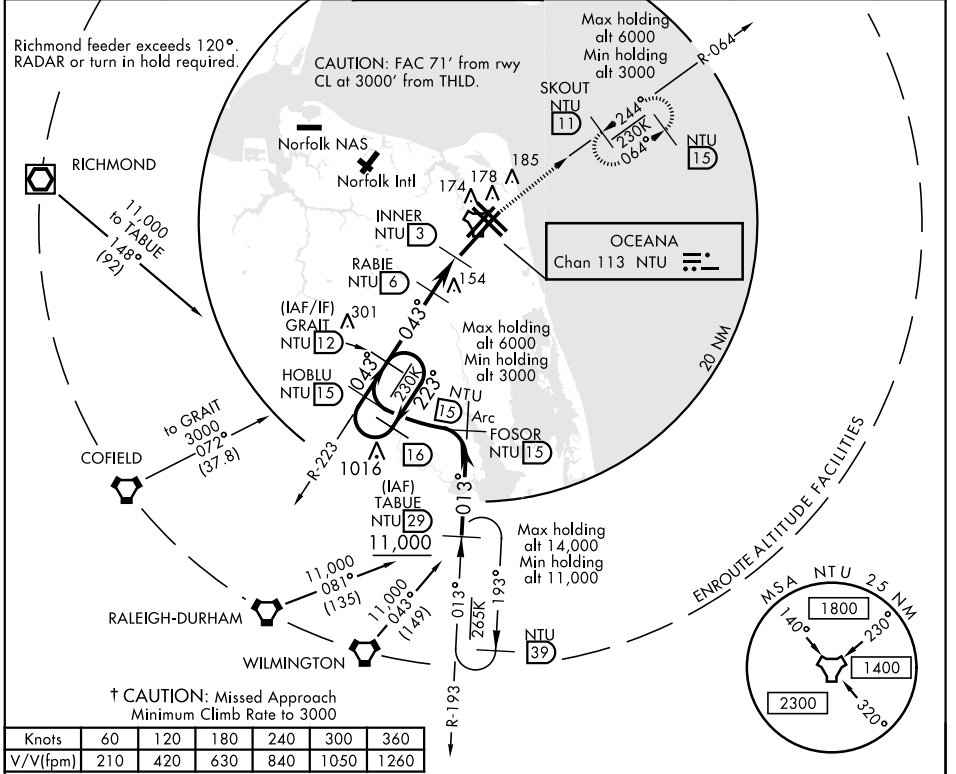
TACAN RWY 5R

TACAN NTU Chan 113	APCH CRS 043°	Rwy Idg 12.008	TDZE 19	Arprt Elev 22
-----------------------	------------------	-------------------	------------	------------------

AL-934 [USN] OCEANA NAS (APOLLO SOUCEK FIELD) (KNTU)

▼ * When ALS inop, increase CAT AB vis to 1 mile, CAT CD vis to 1¼ miles.
ALSF-1
† MISSED APPROACH: Climb to 3000 via R-223 to NTU TACAN and via R-064 to SKOUT and hold.

ATIS 317.6	APP CON 123.9 266.8	OCEANA TOWER 127.075 360.2	GND CON 119.6 336.4	CLNC DEL 254.4	ASR/ PAR
----------------------	-------------------------------	--------------------------------------	-------------------------------	--------------------------	-------------

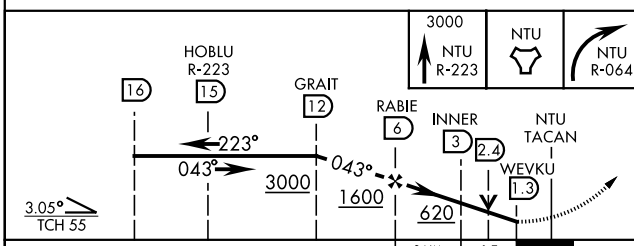


† CAUTION: Missed Approach
Minimum Climb Rate to 3000

Knots	60	120	180	240	300	360
V/V(fpm)	210	420	630	840	1050	1260

ATC Minimum Climb Rate

EMERG SAFE ALT 100 NM 4100



CATEGORY	A	B	C	D
S-5R *	440-½ 421 (500-½)	440-¾ 421 (500-¾)	640-1¼ 618 (700-1¼)	640-2 618 (700-2)
CIRCLING	500-1 478 (500-1)			

ELEV 22	TDZE 19
---------	---------

043° to NTU TACAN

HIRL all Rwy
Wave-Off Lgt all Rwy

TACAN RWY 5R

NE-3, 09 SEP 2021 to 07 OCT 2021

NE-3, 09 SEP 2021 to 07 OCT 2021