

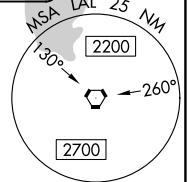
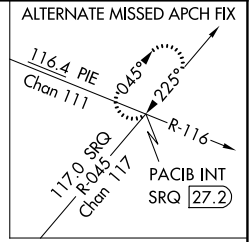
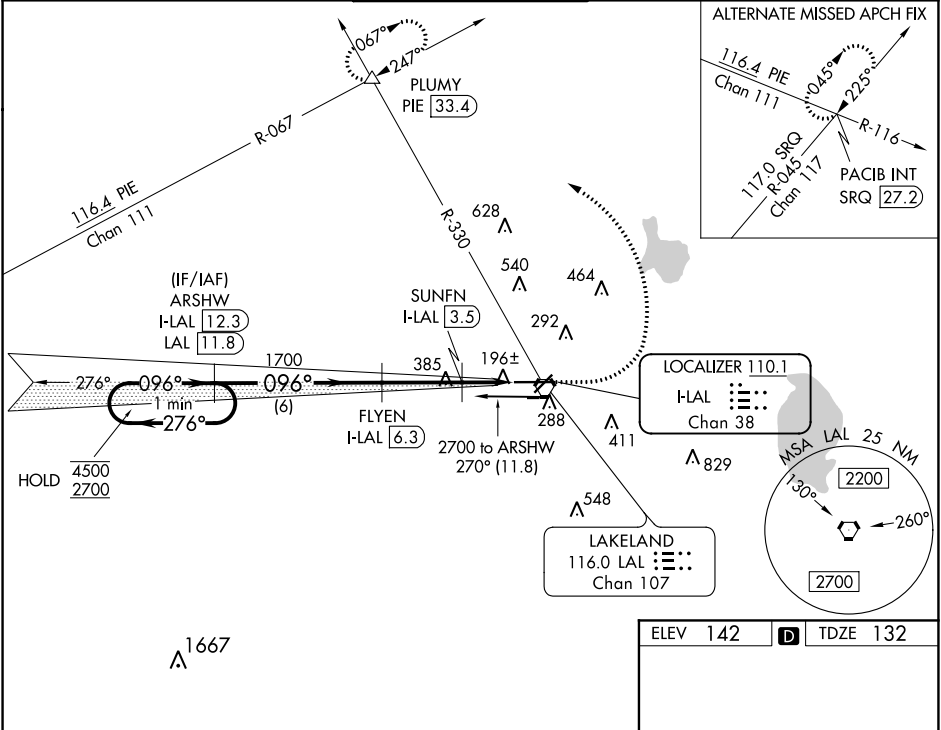
LOC/DME I-LAL 110.1 Chan 38	APP CRS 096°	Rwy Idg 8414 TDZE 132 Apt Elev 142
---	------------------------	---

ILS or LOC RWY 9

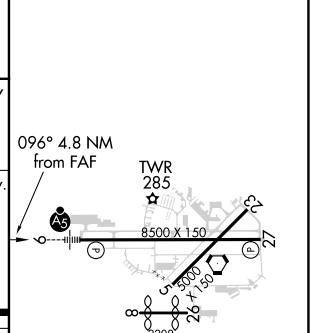
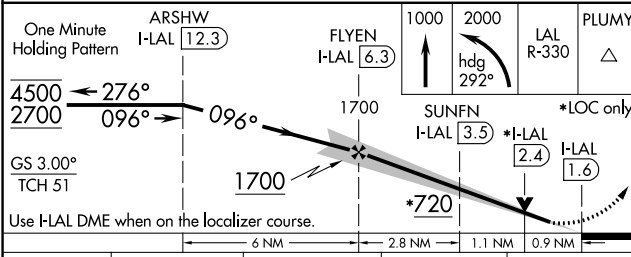
LAKELAND LINDER INTL (LAL)

DME required.		MALSR 	MISSED APPROACH: Climb to 1000 then climbing left turn to 2000 on heading 292° and on LAL VORTAC R-330 to PLUMY INT/ PIE 33.4 DME and hold.
	Circling NA to Rws 8 and 26. # RVR 1800 authorized with use of FD or AP or HUD to DA.		

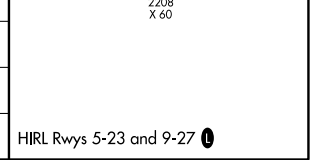
ATIS 118.025	TAMPA APP CON 120.65 290.3	LAKELAND TOWER ★ 124.5 (CTAF) 236.775	GND CON 121.4	UNICOM 122.95
------------------------	--------------------------------------	---	-------------------------	-------------------------



ELEV 142		TDZE 132
----------	--	----------



CATEGORY	A	B	C	D
S-ILS 9#		332/24	200 (200-½)	
S-LOC 9		460/24	328 (400-½)	
CIRCLING	600-1 458 (500-1)	660-1 518 (600-1)	720-1½ 578 (600-1½)	840-2¼ 698 (700-2¼)



SE-3, 09 SEP 2021 to 07 OCT 2021

SE-3, 09 SEP 2021 to 07 OCT 2021