

VORTAC LAL <b>116.0</b> Chan <b>107</b>	APP CRS <b>256°</b>	Rwy Idg TDZE <b>142</b> Apt Elev <b>142</b>
---	------------------------	---

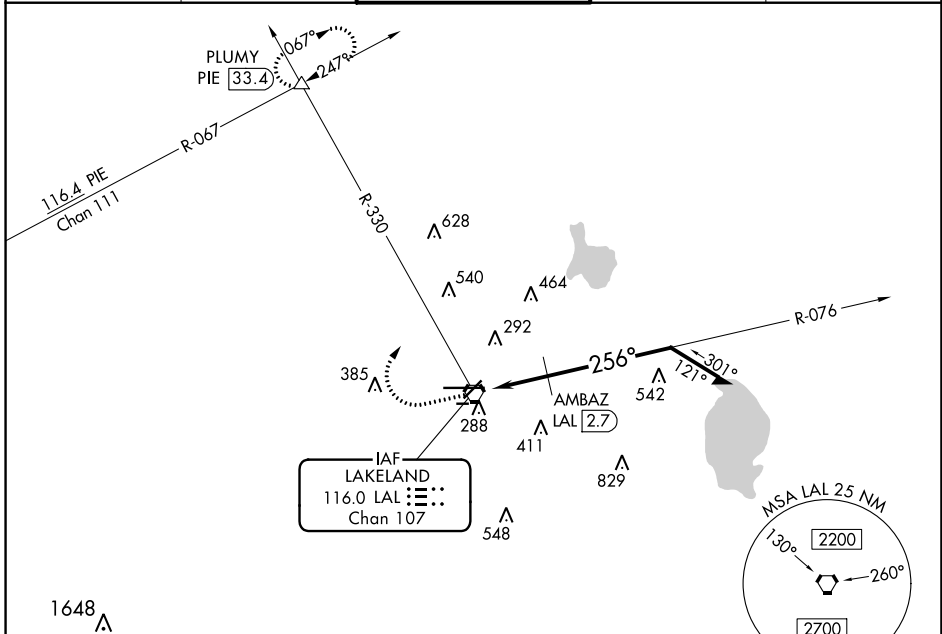
# VOR RWY 27

LAKELAND LINDER INTL (LAL)

**⚠** When local altimeter setting not received, use Plant City altimeter setting and increase all MDA 20 feet.  
**⚠** Circling NA to Rws 8 and 26.

**MISSED APPROACH:** Climb to 1000 then climbing right turn to 2000 on heading 017° and on LAL VORTAC R-330 to PLUMY INT/PIE 33.4 DME and hold.

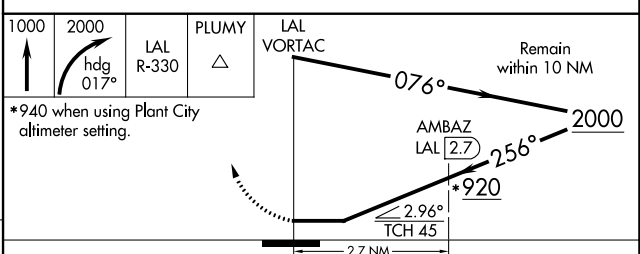
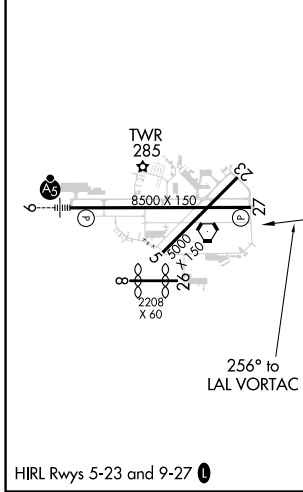
ATIS <b>118.025</b>	TAMPA APP CON <b>120.65 290.3</b>	LAKELAND TOWER ★ <b>124.5 (CTAF) 0 236.775</b>	GND CON <b>121.4</b>	UNICOM <b>122.95</b>
------------------------	--------------------------------------	---	-------------------------	-------------------------



SE-3, 09 SEP 2021 to 07 OCT 2021

SE-3, 09 SEP 2021 to 07 OCT 2021

ELEV <b>142</b>	<b>D</b>	TDZE <b>142</b>
-----------------	----------	-----------------



CATEGORY	A	B	C	D
S-27	920-1 778 (800-1)	920-1¼ 778 (800-1¼)	920-2½	778 (800-2½)
CIRCLING	920-1 778 (800-1)	920-1¼ 778 (800-1¼)	920-2½	778 (800-2½)
AMBAZ FIX MINIMUMS				
S-27	540-1	398 (400-1)	540-1⅛	398 (400-1⅛)
CIRCLING	600-1 458 (500-1)	660-1 518 (600-1)	720-1½ 578 (600-1½)	840-2¼ 698 (700-2¼)