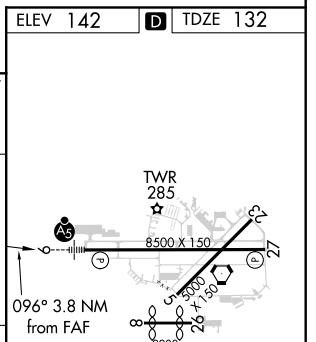
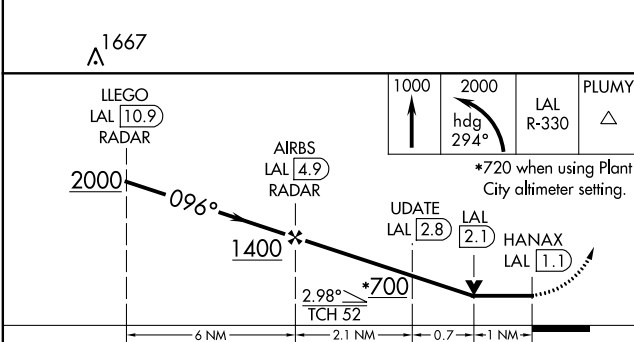
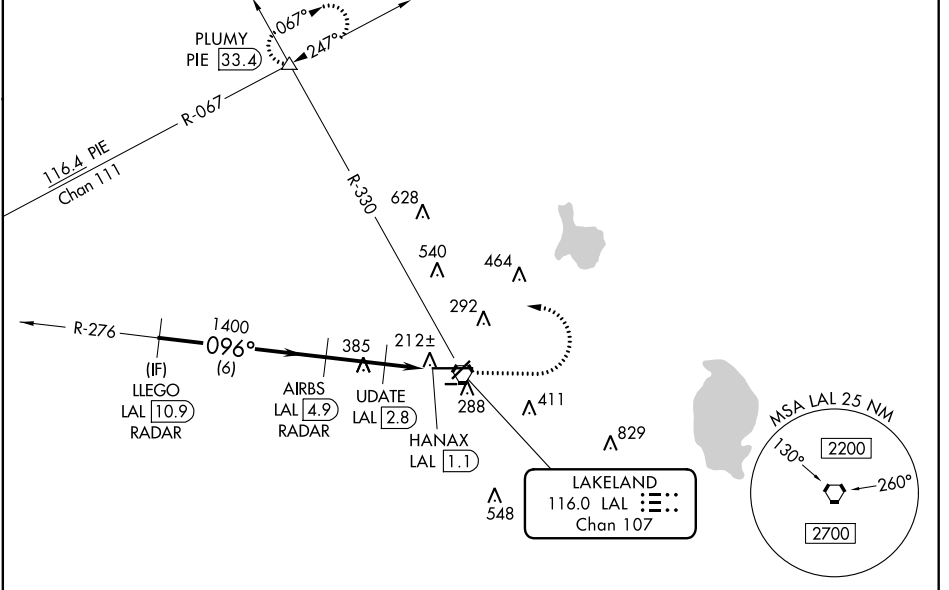


VORTAC LAL 116.0 Chan 107	APP CRS 096°	Rwy Idg 8414 TDZE 132 Apt Elev 142
---	------------------------	---

VOR RWY 9
LAKELAND LINDER INTL (LAL)

RADAR required for procedure entry. DME or RADAR required.			MISSED APPROACH: Climb to 1000 then climbing left turn to 2000 on heading 294° and on LAL VORTAC R-330 to PLUMY INT/PIE 33.4 DME and hold.	
When local altimeter setting not received, use Plant City altimeter setting and increase all MDAs 20 feet and Circling Cat C visibility to 1 3/4 SM. VDP NA when using Plant City altimeter setting. For inop ALS, increase S-9 Cat C/D visibility to 1 1/2 SM; increase UDATE Fix Minimums S-9 Cat C/D visibility to 1 3/4 SM. For inop ALS when using Plant City altimeter setting, increase UDATE Fix Minimums S-9 Cat C/D visibility to 1 1/2 SM. Circling NA to Rwy's 8 and 26.				
ATIS 118.025	TAMPA APP CON 120.65 290.3	LAKELAND TOWER ★ 124.5 (CTAF) 0 236.775	GND CON 121.4	UNICOM 122.95



CATEGORY	A	B	C	D
S-9	700-1/2	568 (600-1/2)	700-1 1/4	568 (600-1 1/4)
CIRCLING	700-1	558 (600-1)	720-1 1/2 578 (600-1 3/4)	840-2 1/4 698 (700-2 1/4)
UDATE FIX MINIMUMS				
S-9	500-1/2	368 (400-1/2)	500-3/4	368 (400-3/4)
CIRCLING	600-1 458 (500-1)	660-1 518 (600-1)	720-1 1/2 578 (600-1 1/2)	840-2 1/4 698 (700-2 1/4)

ELEV 142	TDZE 132
HIRL Rwy's 5-23 and 9-27	
FAF to MAP 3.8 NM	
Knots	60 90 120 150 180
Min:Seq	3:48 2:32 1:54 1:31 1:16

SE-3, 09 SEP 2021 to 07 OCT 2021

SE-3, 09 SEP 2021 to 07 OCT 2021