

LOC/DME I-MFE <b>111.7</b> Chan <b>54</b>	APP CRS <b>137°</b>	Rwy Idg TDZE <b>107</b> Apt Elev <b>107</b>	<b>6983</b>
---	------------------------	---	-------------

# ILS or LOC RWY 14

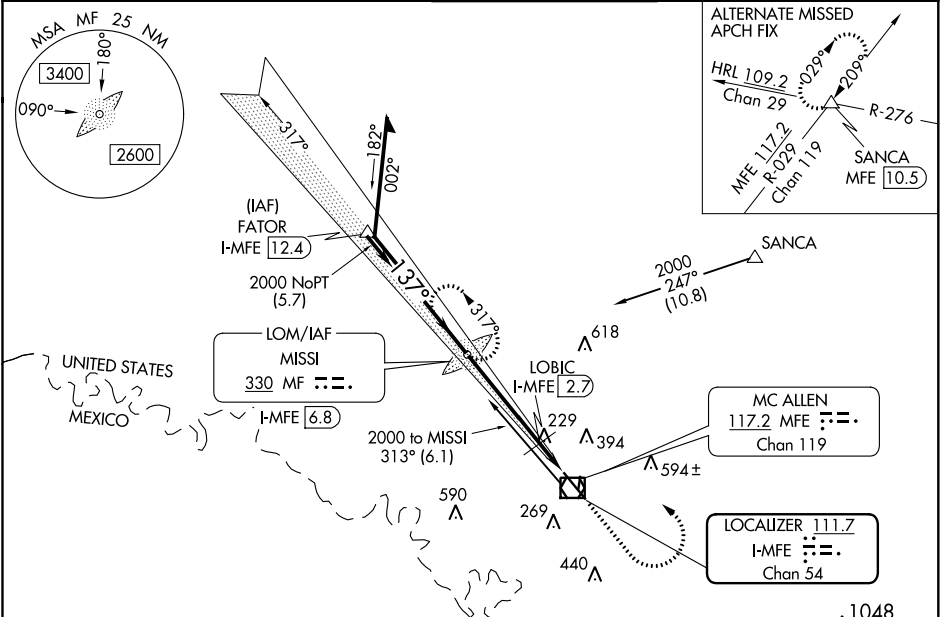
MC ALLEN MILLER INTL (MFE)

**⚠** Circling NA northeast of Rwy 14-32. ADF required. When local altimeter setting not received, use Weslaco altimeter setting: increase all DA 39 feet; increase all MDA 40 feet and S-LOC 14 Cat C/D and Circling Cat C visibility 1/8 mile, increase LOBIC Fix Minimums S-LOC 14 Cat C/D visibility 1/4 mile.

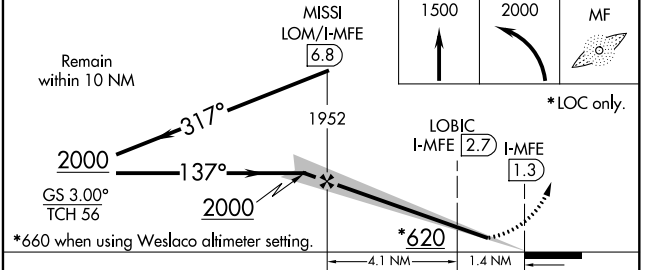
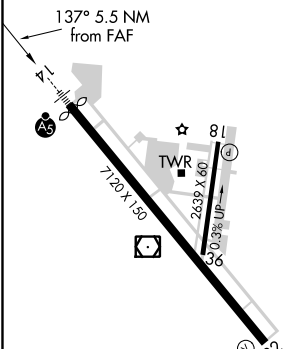
**MALSR**  
AS

**MISSED APPROACH:** Climb to 1500 then climbing left turn to 2000 direct to MISSI LOM and hold.

ATIS <b>128.5</b>	VALLEY APP CON <b>121.0 377.2</b>	MC ALLEN TOWER ★ <b>118.5 (CTAF) 256.9</b>	GND CON <b>121.8</b>	UNICOM <b>122.95</b>
----------------------	--------------------------------------	---	-------------------------	-------------------------



ELEV 107	<b>D</b>	TDZE 107
----------	----------	----------



CATEGORY	A	B	C	D
S-ILS 14	307-1/2 200 (200-1/2)			
S-LOC 14	620-1/2	513 (600-1/2)	620-1	513 (600-1)
<b>C</b> CIRCLING	620-1	513 (600-1)	620-1 1/2 513 (600-1 1/2)	800-2 1/4 693 (700-2 1/4)
LOBIC FIX MINIMUMS				
S-LOC 14	540-1/2	433 (500-1/2)	540-3/4	433 (500-3/4)
<b>C</b> CIRCLING	580-1	473 (500-1)	580-1 1/2 473 (500-1 1/2)	800-2 1/4 693 (700-2 1/4)

FAF to MAP 5.5 NM					
Knots	60	90	120	150	180
Min:Sec	5:30	3:40	2:45	2:12	1:50

SC-3, 09 SEP 2021 to 07 OCT 2021

SC-3, 09 SEP 2021 to 07 OCT 2021