

VOR/DME MFE <b>117.2</b> Chan <b>119</b>	APP CRS <b>134°</b>	Rwy Idg <b>6983</b> TDZE <b>107</b> Apt Elev <b>107</b>
------------------------------------------------	------------------------	---------------------------------------------------------------

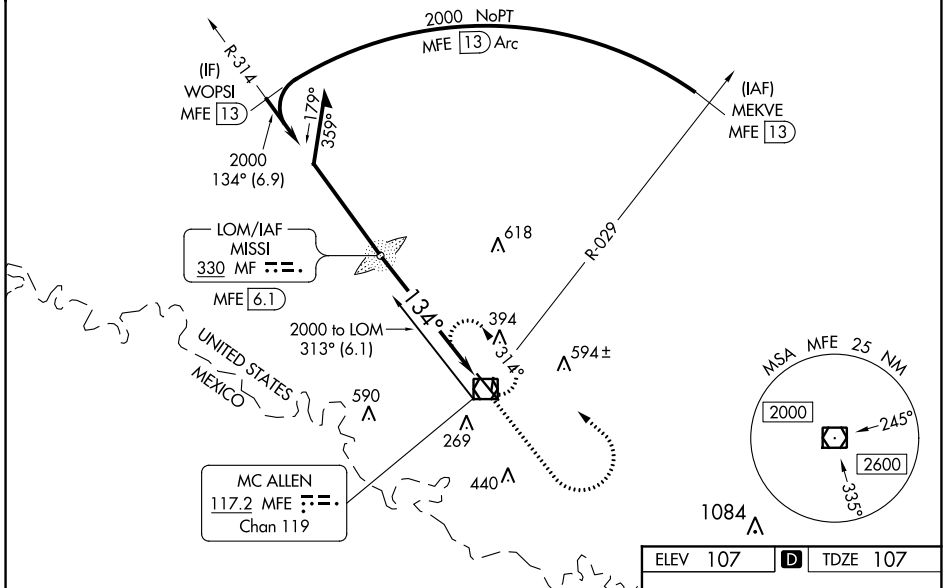
# VOR RWY 14

MC ALLEN MILLER INTL (MFE)

<p><b>⚠</b> Circling NA northeast of Rwy 14-32. ADF or DME required. For nop MALSR, increase S-14 Cat C/D visibility to 1 1/8 mile. When local altimeter setting not received, use Weslaco altimeter setting and increase all MDA 40 feet and S-14 Cat C/D and Circling Cat C visibility 1/8 mile. VDP NA when using Weslaco altimeter setting.</p>	<p>MALSR</p>	<p>MISSED APPROACH: Climb to 1000 then climbing left turn to 2000 direct MFE VOR/DME and hold.</p>

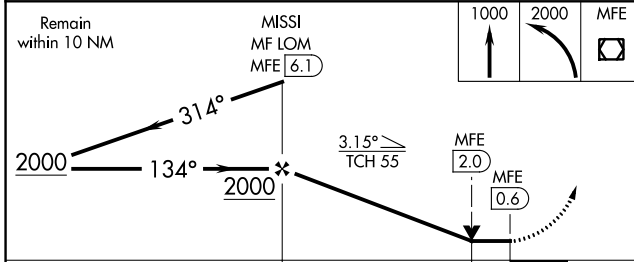
ATIS <b>128.5</b>	VALLEY APP CON <b>121.0 377.2</b>	MC ALLEN TOWER ★ <b>118.5 (CTAF) 256.9</b>	GND CON <b>121.8</b>	UNICOM <b>122.95</b>
----------------------	--------------------------------------	-----------------------------------------------	-------------------------	-------------------------

## ADF or DME REQUIRED

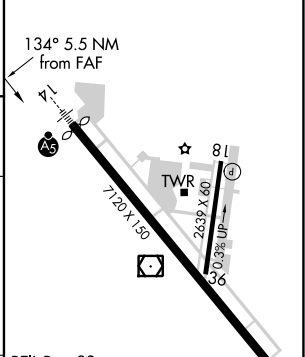


SC-3, 09 SEP 2021 to 07 OCT 2021

SC-3, 09 SEP 2021 to 07 OCT 2021



ELEV 107	D	TDZE 107
----------	---	----------



CATEGORY	A	B	C	D
S-14	620-1/2	513 (600-1/2)	620-1	513 (600-1)
<b>C</b> CIRCLING	620-1	513 (600-1)	620-1 1/2	800-2 1/4 693 (700-2 1/4)

REIL Rwy 32	HIRL Rwy 14-32	MIRL Rwy 18-36			
FAF to MAP 5.5 NM					
Knots	60	90	120	150	180
Min:Sec	5:30	3:40	2:45	2:12	1:50