

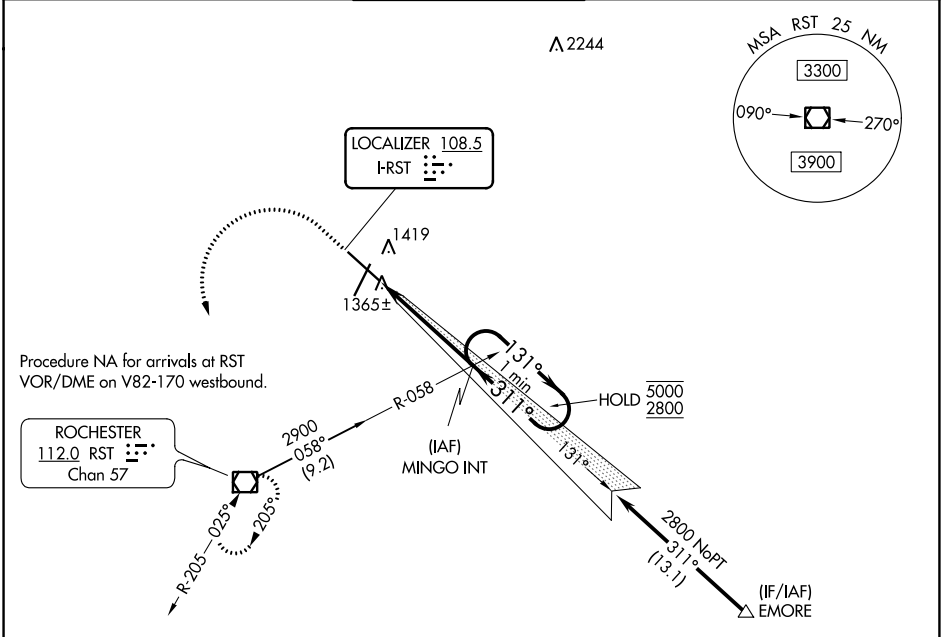
LOC I-RST 108.5	APP CRS 311°	Rwy Idg TDZE Apt Elev	9033 1304 1317
---------------------------	------------------------	-----------------------------	---

COPTER ILS Y or LOC Y RWY 31

ROCHESTER INTL (RST)

 For inop ALS, increase visibility to 1 mile.	MALSR	MISSED APPROACH: Climb to 2000 then climbing left turn to 3000 direct RST VOR/DME and hold.
--	-------	---

ATIS 120.5	ROCHESTER APP CON* 119.8 251.125	ROCHESTER TOWER* 118.3 (CTAF) 257.8	GND CON 121.9	UNICOM 122.95
----------------------	--	---	-------------------------	-------------------------

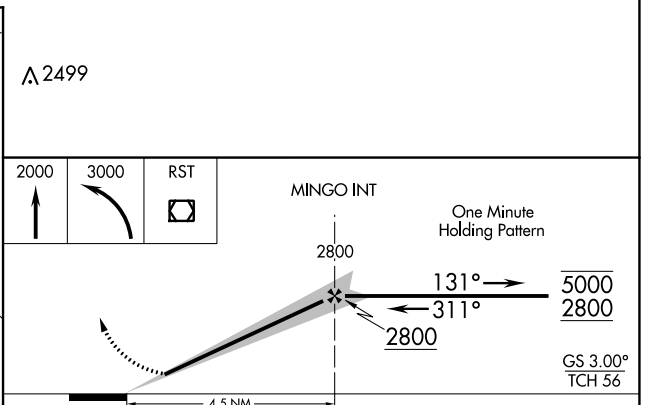


ELEV 1317	D	TDZE 1304
-----------	----------	-----------

311° 4.5 NM from FAF

TDZ/CL Rws 13 and 31
HIRL Rwy 13-31
MIRL Rwy 2-20
REIL Rws 2 and 20

FAF to MAP 4.5 NM					
Knots	60	90	120	150	180
Min:Sec	4:30	3:00	2:15	1:48	1:30



CATEGORY	COPTER	
H-ILS 31	1504/12	200 (200-¼)
H-LOC 31	1620/12	316 (400-¼)

COPTER ILS Y or LOC Y RWY 31

NC-1, 09 SEP 2021 to 07 OCT 2021

NC-1, 09 SEP 2021 to 07 OCT 2021