

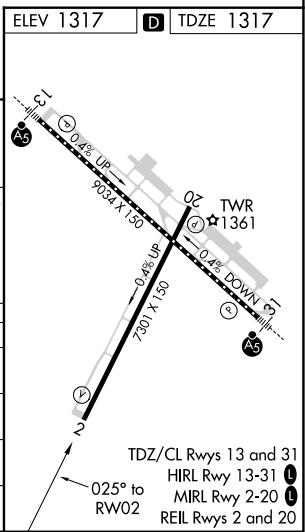
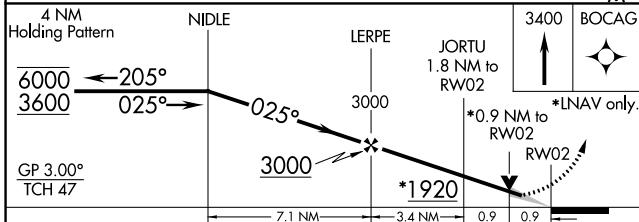
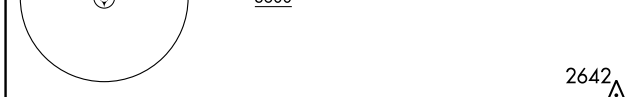
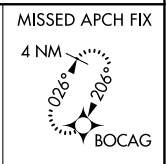
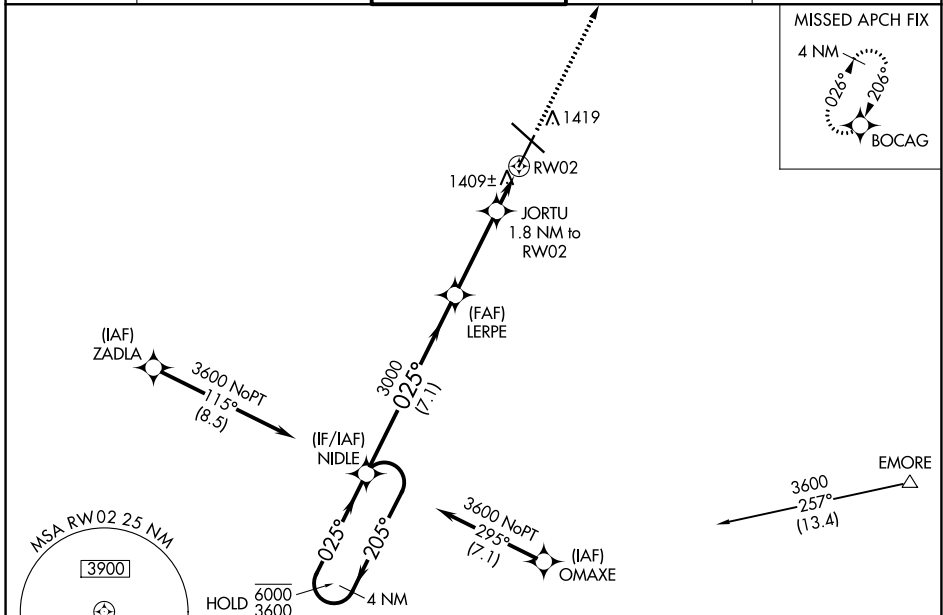
WAAS CH 69621 W02A	APP CRS 025°	Rwy Idg 7300 TDZE 1317 Apt Elev 1317
--	------------------------	---

RNAV (GPS) RWY 2

ROCHESTER INTL (RST)

RNP APCH.		MISSED APPROACH: Climb to 3400 direct BOCAG and hold, continue climb-in-hold to 4800.		
ASR For uncompensated Baro-VNAV systems, LNAV/VNAV NA below -28°C or above 54°C.				

ATIS 120.5	ROCHESTER APP CON * 119.8 251.125	ROCHESTER TOWER * 118.3 (CTAF) 257.8	GND CON 121.9	UNICOM 122.95
----------------------	---	--	-------------------------	-------------------------



CATEGORY	A	B	C	D
LPV DA		1567-1	250 (300-1)	
LNAV/VNAV DA		1592-1	275 (300-1)	
LNAV MDA		1660-1	343 (400-1)	
CIRCLING	1720-1 403 (500-1)	1780-1 463 (500-1)	1900-1½ 583 (600-1½)	1900-2 583 (600-2)

NC-1, 09 SEP 2021 to 07 OCT 2021

NC-1, 09 SEP 2021 to 07 OCT 2021