

WAAS CH <b>57922</b> <b>W20A</b>	APP CRS <b>206°</b>	Rwy Idg <b>7300</b> TDZE <b>1305</b> Apt Elev <b>1317</b>
--	------------------------	---

# RNAV (GPS) RWY 20

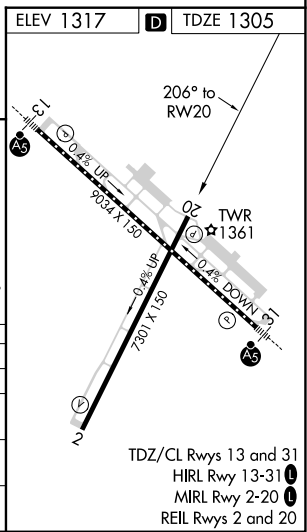
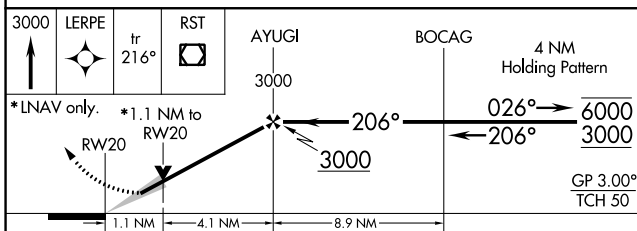
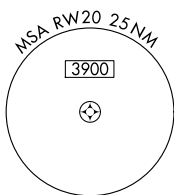
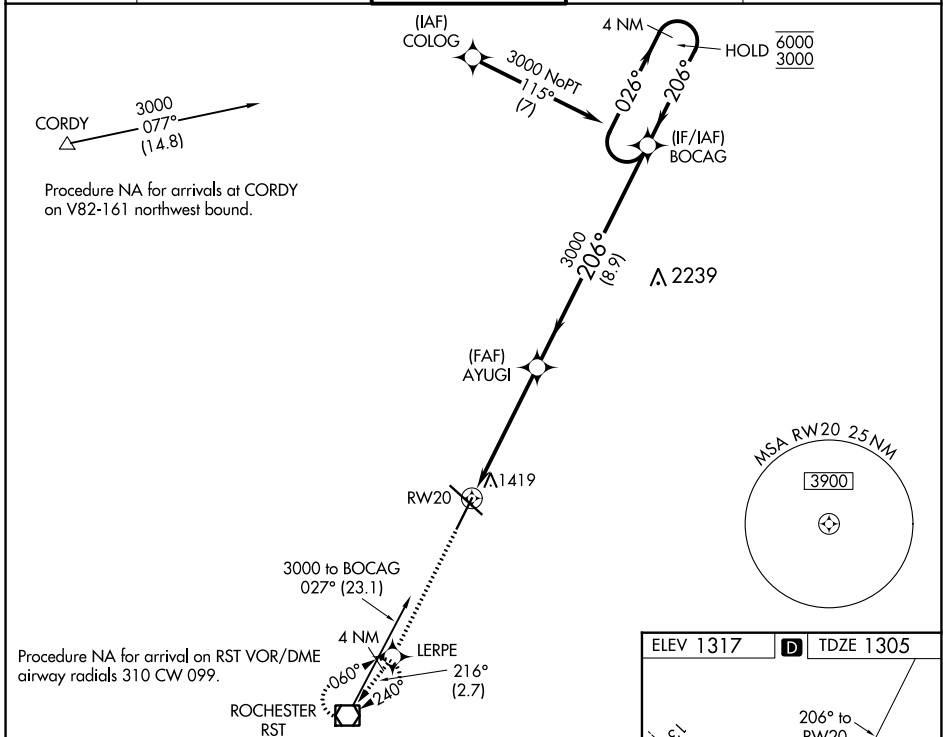
ROCHESTER INTL (RST)

RNP APCH.

ASR For uncompensated Baro-VNAV systems, LNAV/VNAV NA below -28°C or above 54°C.

MISSED APPROACH: Climb to 3000 direct LERPE and on track 216° to RST VOR/DME and hold.

ATIS <b>120.5</b>	ROCHESTER APP CON ★ <b>119.8 251.125</b>	ROCHESTER TOWER ★ <b>118.3 (CTAF) 257.8</b>	GND CON <b>121.9</b>	UNICOM <b>122.95</b>
----------------------	---	--	-------------------------	-------------------------



3000	LERPE	tr 216°	RST	AYUGI	BOCAG	4 NM Holding Pattern
*LNAV only.				3000		6000 3000
		*1.1 NM to RWY20				GP 3.00° TCH 50
		1.1 NM	4.1 NM	8.9 NM		
CATEGORY	A	B	C	D		
LPV DA		1555-1	250 (300-1)			
LNAV/VNAV DA		1603-1	298 (300-1)			
LNAV MDA		1680-1	375 (400-1)			
CIRCLING	1720-1 403 (500-1)	1780-1 463 (500-1)	1900-1½ 583 (600-1½)	1900-2 583 (600-2)		

NC-1, 09 SEP 2021 to 07 OCT 2021

NC-1, 09 SEP 2021 to 07 OCT 2021