

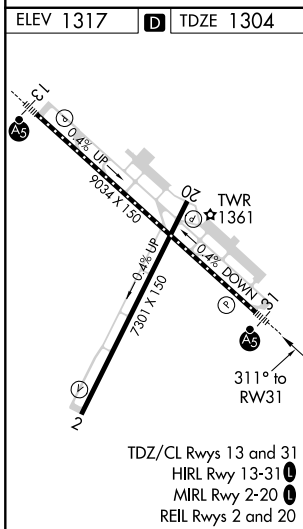
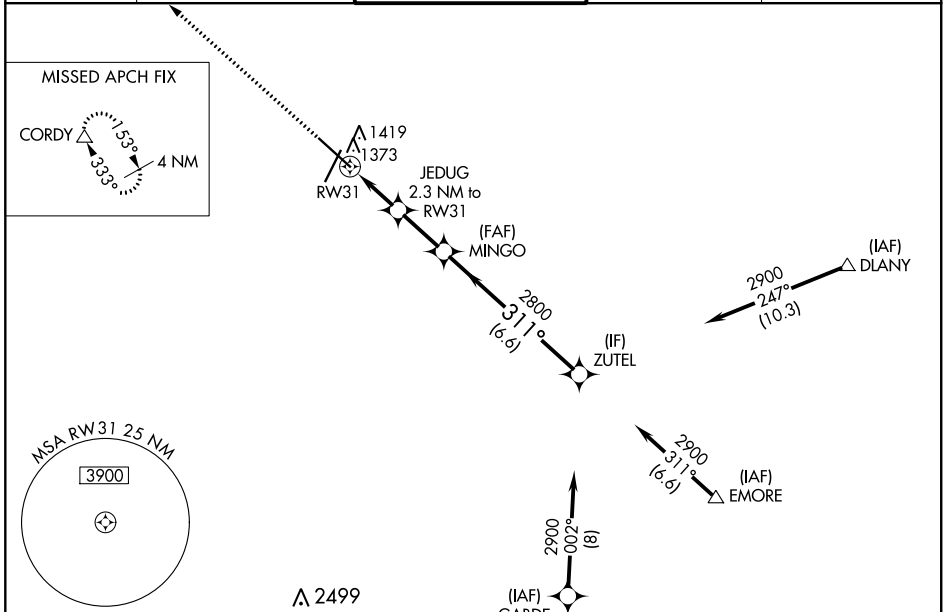
WAAS CH 49028 W31A	APP CRS 311°	Rwy Idg TDZE Apt Elev	9033 1304 1317
----------------------------------------	------------------------	-----------------------------	-------------------------------------------

RNAV (GPS) RWY 31

ROCHESTER INTL (RST)

RNP APCH.	MALSR	MISSED APPROACH: Climb to 3000 direct CORDY and hold.
ASR		
For uncompensated Baro-VNAV systems, LNAV/VNAV NA below -20°C or above 54°C. For inop ALS, increase LNAV/VNAV all Cats visibility to RVR 4500, increase LNAV Cat C/D visibility to RVR 5500.		

ATIS 120.5	ROCHESTER APP CON* 119.8 251.125	ROCHESTER TOWER* 118.3 (CTAF) 257.8	GND CON 121.9	UNICOM 122.95
----------------------	--------------------------------------------	-----------------------------------------------	-------------------------	-------------------------



ELEV 1317	D	TDZE 1304		
3000	CORDY	ZUTEL		
*LNAV only.				
RW31	JEDUG 2.3 NM to RW31	MINGO 2800		
1 NM	*1 NM to RW31	ZUTEL 2900		
1.3 NM	2.2 NM	6.6 NM		
2100*	2800	2900		
GP 3.00° TCH 56				
CATEGORY	A	B	C	D
LPV DA	1504/18 200 (200-½)			
LNAV/VNAV DA	1554/24 250 (300-½)			
LNAV MDA	1640/24	336 (400-½)	1640/35	336 (400-¾)
CIRCLING	1720-1 403 (500-1)	1780-1 463 (500-1)	1900-1½ 583 (600-1½)	1900-2 583 (600-2)

NC-1, 09 SEP 2021 to 07 OCT 2021

NC-1, 09 SEP 2021 to 07 OCT 2021