

LOC/DME I-TXN <b>111.55</b> Chan <b>52 (Y)</b>	APP CRS <b>021°</b>	Rwy Idg <b>8000</b> TDZE <b>867</b> Apt Elev <b>871</b>
------------------------------------------------------	------------------------	---------------------------------------------------------------

# ILS or LOC RWY 2

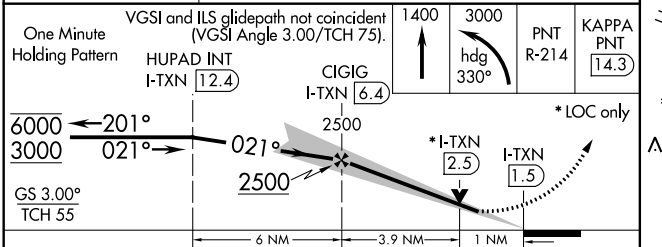
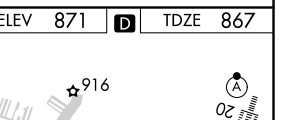
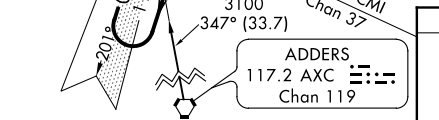
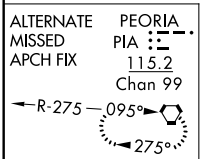
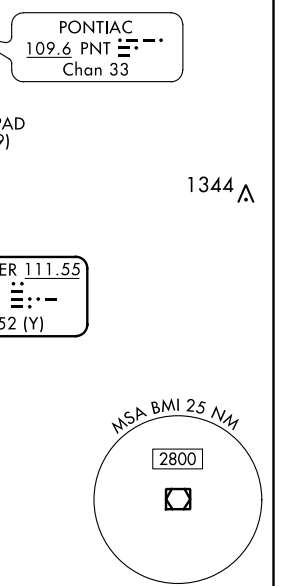
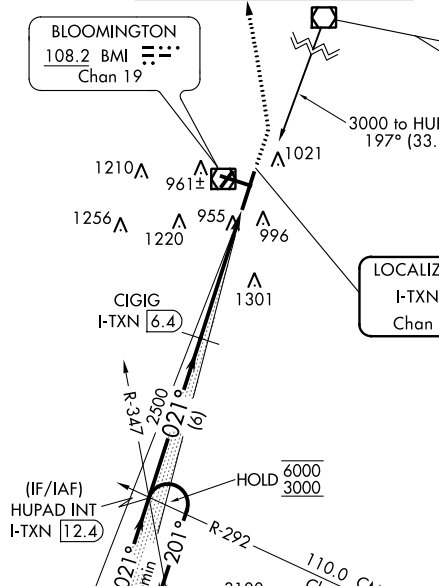
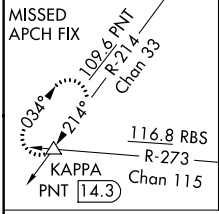
CENTRAL IL RGNL/BLOOMINGTON-NORMAL (BMI)

DME required for LOC only.

Autopilot coupled approach NA below 1100. VDP NA with General Downing-Peoria Intl altimeter setting. Inop table does not apply to S-ILS 2. For inop ALS, increase S-LOC 2 Cat A/B visibility to RVR 5500 and Cat C/D to RVR 6000. When local altimeter setting not received, use General Downing-Peoria Intl altimeter setting and increase all DA 116 feet and all MDA 120 feet, and S-LOC 2 Cat C/D visibility to RVR 5500. Circling Cat C/D visibility ¼ SM. For inop ALS when using General Downing-Peoria Intl altimeter setting, increase S-ILS 2 all Cats visibility to RVR 4500, S-LOC 2 Cat C/D visibility to 1 ½ SM.

**MALS R**  
MISSED APPROACH:  
Climb to 1400 then climbing left turn to 3000 on heading 330° and on PNT VOR/DME R-214 to KAPPA INT/PNT 14.3 DME and hold.

ATIS <b>135.35</b>	PEORIA APP CON <b>128.725 256.9</b>	BLOOMINGTON TOWER ★ <b>124.6 (CTAF) 0 269.575</b>	GND CON <b>121.65</b>	UNICOM <b>122.95</b>
-----------------------	----------------------------------------	------------------------------------------------------	--------------------------	-------------------------



CATEGORY	A	B	C	D
S-ILS 2		1067/40	200 (200-¾)	
S-LOC 2		1260/40	393 (400-¾)	
CIRCLING	1340-1	469 (500-1)	1620-2¼ 749 (800-2¼)	1620-2½ 749 (800-2½)

TDZ/Cl Wry 20  
HIRL Rwy 2-20 and 11-29

EC-3, 09 SEP 2021 to 07 OCT 2021

EC-3, 09 SEP 2021 to 07 OCT 2021