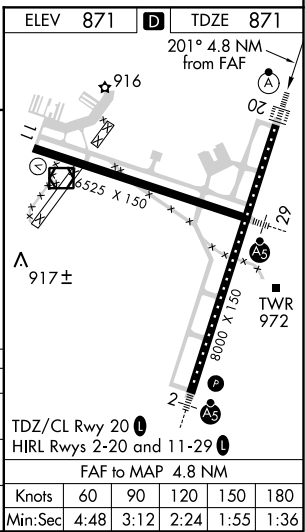
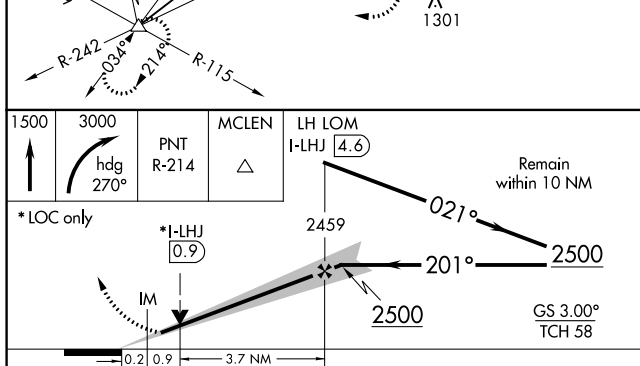
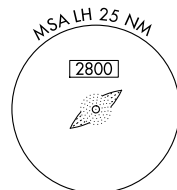
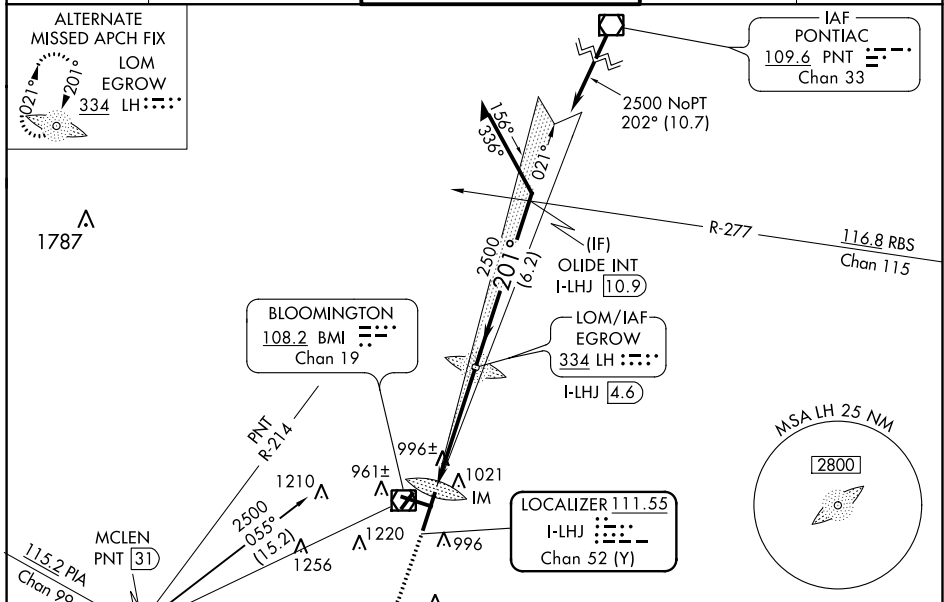


LOC/DME I-LHJ 111.55 Chan 52 (Y)	APP CRS 201°	Rwy Idg 8000 TDZE 871 Apt Elev 871
--	------------------------	---

ILS or LOC RWY 20

CENTRAL IL RGNL/BLOOMINGTON-NORMAL (BMI)

<p>⚠ VDP NA when using General Downng-Peoria Intl altimeter setting. When local altimeter setting not received, use General Downng-Peoria Intl altimeter setting: increase all DA 116 feet and all MDA 120 feet; increase S-ILS all Cats visibility to RVR 2400, S-LOC Cat C and D visibility to RVR 5500, and Circling Cat C and D visibility ¼ mile. For inoperative ALSF-2 when using General Downng-Peoria Intl altimeter setting increase ILS all Cats visibility to RVR 5000.</p>	<p>ALSF-2 A</p>	<p>MISSED APPROACH: Climb to 1500 then climbing right turn to 3000 on heading 270° and PNT VOR/DME R-214 to MCLEN INT/PNT 31 DME and hold.</p>
	<p>ATIS 135.35 PEORIA APP CON 128.725 256.9 BLOOMINGTON TOWER* 124.6 (CTAF) 269.575 GND CON 121.65 UNICOM 122.95</p>	



CATEGORY	A	B	C	D
S-ILS 20	1071/18		200 (200-½)	
S-LOC 20	1260/24	389 (400-½)	1260/35	389 (400-¾)
C CIRCLING	1340-1 469 (500-1)		1620-2¼ 749 (800-2¼)	1620-2½ 749 (800-2½)

EC-3, 09 SEP 2021 to 07 OCT 2021

EC-3, 09 SEP 2021 to 07 OCT 2021