

LOC/DME I-BMI <b>110.95</b> Chan <b>46 (Y)</b>	APP CRS <b>111°</b>	Rwy Idg TDZE Apt Elev	<b>6525</b> <b>871</b> <b>871</b>
--	------------------------	-----------------------------	---

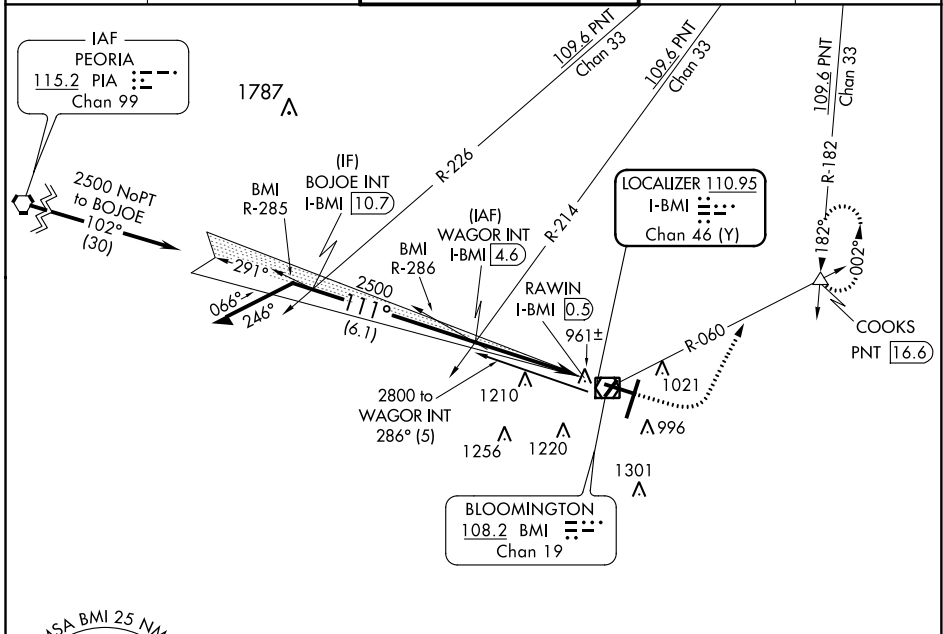
# LOC BC RWY 11

CENTRAL IL RGNL/BLOOMINGTON-NORMAL (BMI)

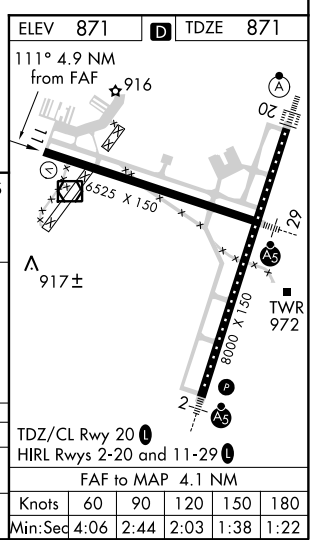
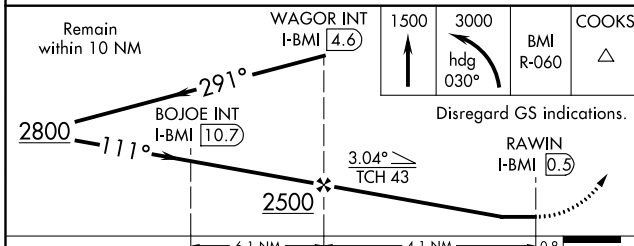
**⚠** When local altimeter setting not received, use General Downing-Peoria Intl altimeter setting: increase all MDA 120 feet, increase S-11 and Circling Cats C/D visibility ¼ mile.

MISSED APPROACH: Climb to 1500 then climbing left turn to 3000 on heading 030° and BMI VOR/DME R-060 to COOKS INT/PNT 16.6 DME and hold.

ATIS <b>135.35</b>	PEORIA APP CON <b>128.725 256.9</b>	BLOOMINGTON TOWER * <b>124.6 (CTAF) 0 269.575</b>	GND CON <b>121.65</b>	UNICOM <b>122.95</b>
-----------------------	--	--	--------------------------	-------------------------



## BACK COURSE



CATEGORY	A	B	C	D
S-11	1260-1 389 (400-1)		1260-1½ 389 (400-1½)	
<b>C</b> CIRCLING	1340-1 469 (500-1)		1620-2¼ 749 (800-2¼)	1620-2½ 749 (800-2½)

TDZ/CL Rwy 20	HIRL Rwy 2-20 and 11-29	FAF to MAP 4.1 NM			
Knots	60	90	120	150	180
Min:Seq	4:06	2:44	2:03	1:38	1:22

EC-3, 09 SEP 2021 to 07 OCT 2021

EC-3, 09 SEP 2021 to 07 OCT 2021