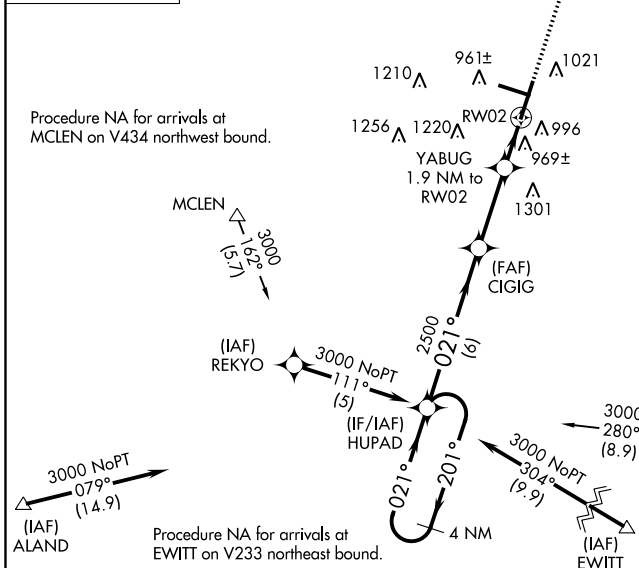
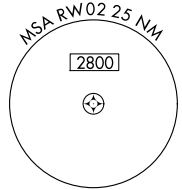
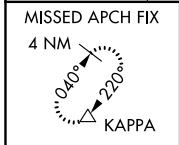


WAAS CH <b>56303</b> <b>W02A</b>	APP CRS <b>021°</b>	Rwy Idg <b>8000</b> TDZE <b>867</b> Apt Elev <b>871</b>
--	------------------------	---

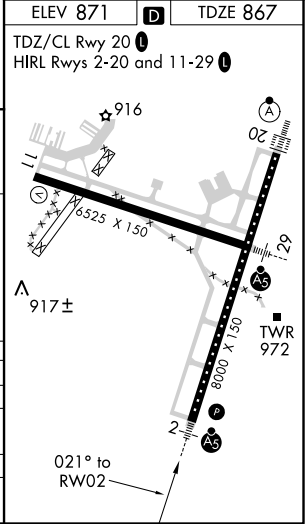
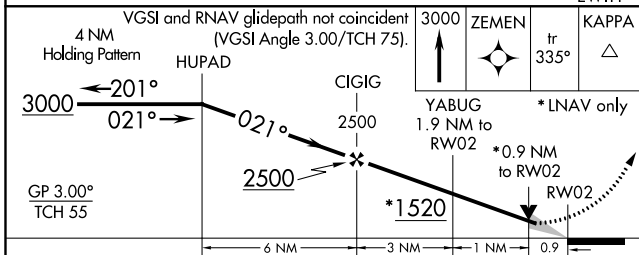
# RNAV (GPS) RWY 2

CENTRAL IL RGNL/BLOOMINGTON-NORMAL (BMI)

RNP APCH. ▼ For uncompensated Baro-VNAV systems, LNAV/VNAV NA below -16°C or above 54°C. Baro-VNAV and VDP NA when using General Downing-Peoria Intl altimeter setting. When local altimeter setting not received, use General Downing-Peoria Intl altimeter setting: increase all DA 116 feet and all MDA 120 feet; increase LPV and LNAV/VNAV all Cats visibility ½ SM, LNAV Cats C/D visibility ¾ SM, and Circling all Cats visibility ¼ SM. Inop table does not apply.		MALSR 	MISSED APPROACH: Climb to 3000 direct ZEMEN then on track 335° to KAPPA and hold.	
ATIS <b>135.35</b>	PEORIA APP CON <b>128.725 256.9</b>	BLOOMINGTON TOWER * <b>124.6 (CTAF) 0 269.575</b>	GND CON <b>121.65</b>	UNICOM <b>122.95</b>



Procedure NA for arrivals at THEMEN on V313 southbound.



CATEGORY	A	B	C	D
LPV DA		1214-1¼	347 (400-1¼)	
LNAV/VNAV DA		1269-1¼	402 (400-1¼)	
LNAV MDA	1220-1	353 (400-1)	1220-1¼	353 (400-1¼)
CIRCLING	1340-1	469 (500-1)	1620-2¼ 749 (800-2¼)	1620-2½ 749 (800-2½)

# RNAV (GPS) RWY 2

EC-3, 09 SEP 2021 to 07 OCT 2021

EC-3, 09 SEP 2021 to 07 OCT 2021