

WAAS CH <b>99303</b> <b>W20A</b>	APP CRS <b>201°</b>	Rwy Idg TDZE Apt Elev	<b>8000</b> <b>871</b> <b>871</b>
--	------------------------	-----------------------------	---

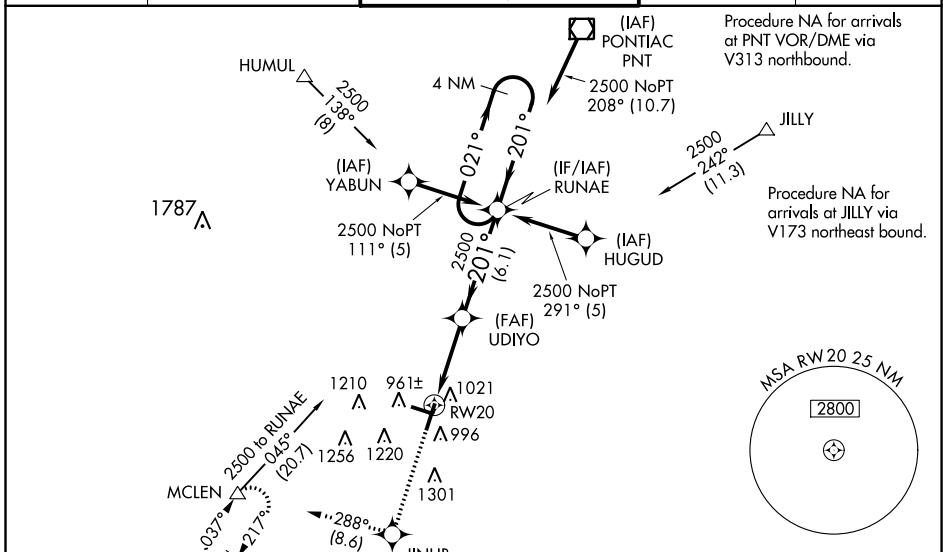
# RNAV (GPS) RWY 20

CENTRAL IL RGNL/BLOOMINGTON-NORMAL (BMI)

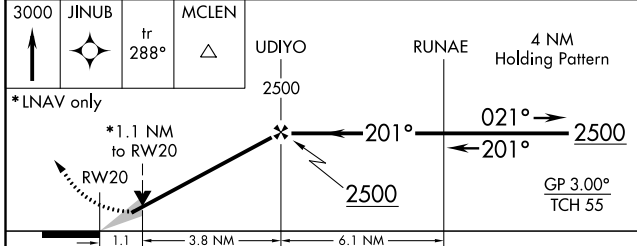
**⚠** For uncompensated Baro-VNAV systems, LNAV/VNAV NA below -16°C (4°F) or above 54°C (130°F). DME/DME RNP-0.3 NA. Baro-VNAV and VDP NA when using General Downing-Peoria Intl altimeter setting. When local altimeter setting not received, use General Downing-Peoria Intl altimeter setting: increase all DA 116 feet and all MDA 120 feet; increase LPV all Cats visibility to 3/4 mile, LNAV/VNAV all Cats visibility to 1 3/8 mile, LNAV Cats C/D visibility to 1 mile, and Circling Cats C/D visibility 1/2 mile. For inop ALSF increase LNAV Cat C/D visibility to RVR 6000. For inoperative ALSF-2 when using General Downing-Peoria Intl altimeter setting increase LPV all Cats visibility to RVR 6000.

**ALSF-2**  
**(A)**  
MISSED APPROACH:  
Climb to 3000 direct JINUB and on track 288° to MCLEN and hold.

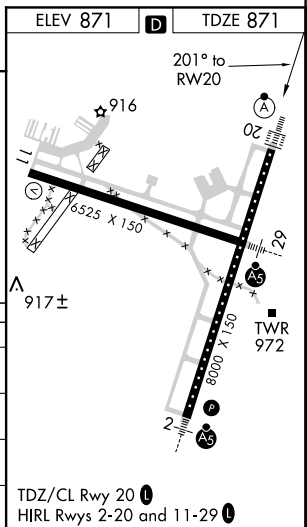
ATIS <b>135.35</b>	PEORIA APP CON <b>128.725 256.9</b>	BLOOMINGTON TOWER * <b>124.6</b> (CTAF) <b>0 269.575</b>	GND CON <b>121.65</b>	UNICOM <b>122.95</b>
-----------------------	--	---	--------------------------	-------------------------



3000	JINUB	MCLEN	UDIYO	RUNAE	4 NM Holding Pattern
↑	fr 288°	△	2500	2500	



CATEGORY	A	B	C	D
LPV DA		1121/24	250 (300-1/2)	
LNAV/VNAV DA		1301/50	430 (500-1)	
LNAV MDA	1280/24	409 (500-1/2)	1280/40	409 (500-3/4)
<b>C</b> CIRCLING	1340-1	469 (500-1)	1620-2 1/4 749 (800-2 1/4)	1620-2 1/2 749 (800-2 1/2)



# RNAV (GPS) RWY 20

EC-3, 09 SEP 2021 to 07 OCT 2021

EC-3, 09 SEP 2021 to 07 OCT 2021