

WAAS CH 60909 W29A	APP CRS 291°	Rwy Idg TDZE Apt Elev	6525 871 871
--	------------------------	-----------------------------	---

RNAV (GPS) RWY 29

CENTRAL IL RGNL/BLOOMINGTON-NORMAL (BMI)

▼ For uncompensated Baro-VNAV systems, LNAV/VNAV NA below -16°C (4°F) or above 54°C (130°F). DME/DME RNP-0.3 NA. Baro-VNAV and VDP NA when using General Downing-Peoria Intl altimeter setting. When local altimeter setting not received, use General Downing-Peoria Intl altimeter setting: increase all DA 116 feet and all MDA 120 feet; increase LPV all Cats visibility to RVR 3500, LNAV/VNAV all Cats and LNAV Cats C/D visibility ¾ mile, and Circling Cats C/D visibility ¼ mile. For inoperative MALSRs when using General Downing-Peoria Intl Regional altimeter setting increase LPV all Cats visibility ½ mile, and LNAV Cat C/D visibility ¾ mile.



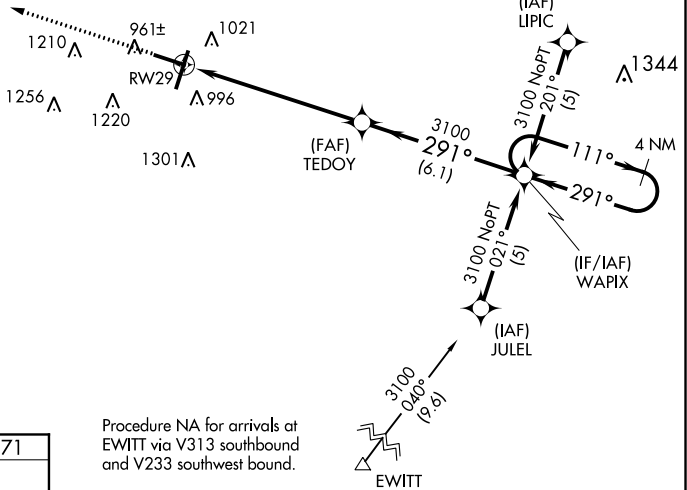
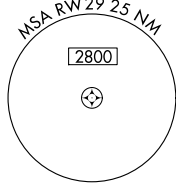
MISSED APPROACH:
Climb to 2500 direct ZEXED and hold.

ATIS 135.35	PEORIA APP CON 128.725 256.9	BLOOMINGTON TOWER * 124.6 (CTAF) 269.575	GND CON 121.65	UNICOM 122.95
-----------------------	--	--	--------------------------	-------------------------

Procedure NA for arrivals at JILLY via V173 northeast bound and V227 northwest bound.

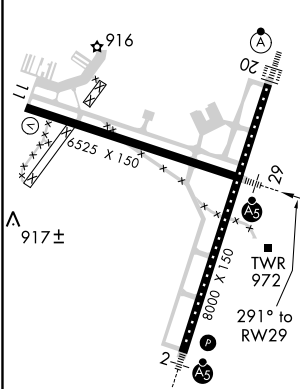


4 NM

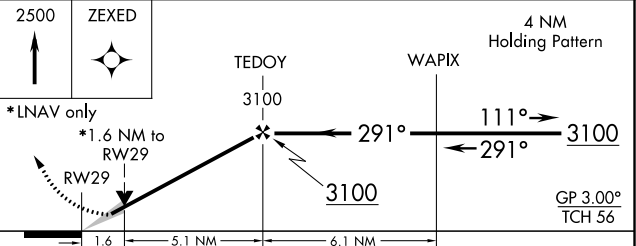


Procedure NA for arrivals at EWITT via V313 southbound and V233 southwest bound.

ELEV 871	D	TDZE 871
----------	----------	----------



TDZ/CL Rwy 20 **1**
HIRL Rwy 2-20 and 11-29 **1**



CATEGORY	A	B	C	D
LPV DA		1121/24	250 (300-½)	
LNAV/VNAV DA		1304/50	433 (500-1)	
LNAV MDA	1460/24	589 (600-½)	1460-1¼	589 (600-1¼)
C CIRCLING	1460-1	589 (600-1)	1620-2¼ 749 (800-2¼)	1620-2½ 749 (800-2½)

RNAV (GPS) RWY 29

EC-3, 09 SEP 2021 to 07 OCT 2021

EC-3, 09 SEP 2021 to 07 OCT 2021