

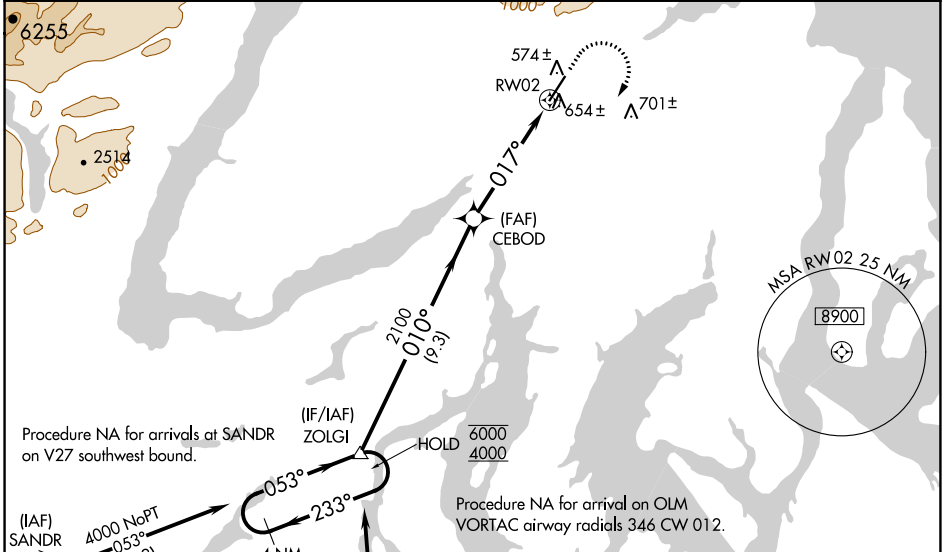
WAAS CH 49232 W02A	APP CRS 017°	Rwy Idg TDZE Apt Elev	6000 444 444
--	------------------------	-----------------------------	---

RNAV (GPS) RWY 2

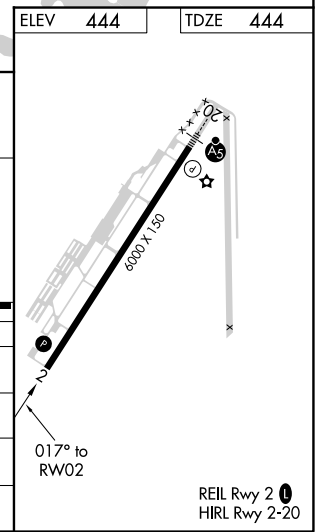
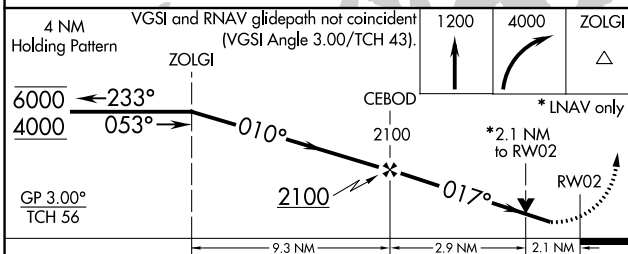
BREMERTON NTL (PWT)

RNP APCH.	<p>▽ ▲</p> <p>Circling NA for Cats C and D west of Rwy 2-20. Rwy 2 helicopter visibility reduction below ¾ SM NA. For uncompensated BARO-VNAV systems, LNAV/VNAV NA below -15°C above 54°C.</p>	<p>MISSED APPROACH: Climb to 1200 then climbing right turn to 4000 direct ZOLGI and hold, continue climb-in-hold to 4000.</p>
-----------	---	---

AWOS-3PT 121.2	SEATTLE APP CON 127.1 254.4 269.125	UNICOM 123.05 (CTAF) 0
--------------------------	---	----------------------------------



ELEV	444	TDZE	444
------	-----	------	-----



CATEGORY	A	B	C	D
LPV DA	772-1 328 (400-1)			
LNAV/VNAV DA	913-1½ 469 (500-1½)			
LNAV MDA	1160-1	716 (800-1)	1160-2	716 (800-2)
C CIRCLING	1160-1	716 (800-1)	1160-2 716 (800-2)	1240-2½ 796 (800-2½)

NW-1, 09 SEP 2021 to 07 OCT 2021

NW-1, 09 SEP 2021 to 07 OCT 2021