

| | | | |
|------------|-------------|----------|------------|
| NDB BMW | APP CRS | Rwy Idg | 4600 |
| 404 | 312° | TDZE | 922 |
| | | Apt Elev | 934 |

NDB RWY 31

BARROW COUNTY (WDR)

⚠ For inop ALS, increase S-31 Cat A/B visibility to 1 SM. Circling Rwy 13, 23 NA at night. Rwy 31 helicopter visibility reduction below $\frac{3}{4}$ SM NA.

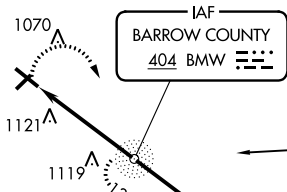
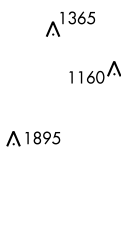
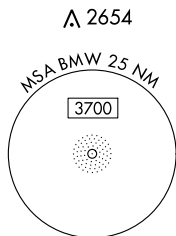


MISSED APPROACH: Climbing right turn to 2500 direct BMW NDB and hold.

AWOS-3
118.575

ATLANTA APP CON ★
132.475 291.1

UNICOM
123.0 (CTAF) 0



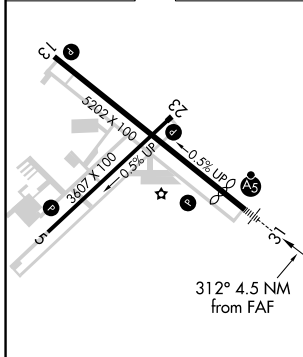
ATHENS
109.6 AHN
Chan 33



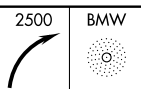
SE-4, 09 SEP 2021 to 07 OCT 2021

SE-4, 09 SEP 2021 to 07 OCT 2021

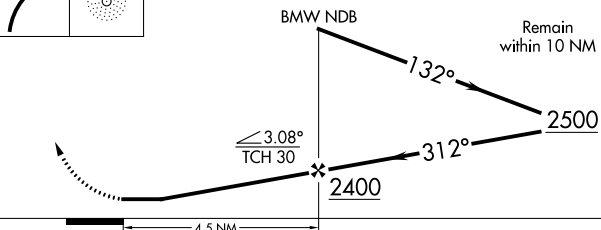
| | | | | |
|------|-----|----------|------|-----|
| ELEV | 934 | D | TDZE | 922 |
|------|-----|----------|------|-----|



312° 4.5 NM from FAF
REIL Rwy 31
HIRL Rwy 13-31
MIRL Rwy 5-23



VGSI and descent angles not coincident (VGSI Angle 3.00/TCH 45).



| CATEGORY | A | B | C | D |
|----------|-----------------------|---------------------------|-----------------------|--|
| S-31 | 1480- $\frac{3}{4}$ | 558 (600- $\frac{3}{4}$) | 1480- $\frac{1}{8}$ | 558 (600- $\frac{1}{8}$) |
| CIRCLING | 1480-1 546 (600-1) | 1580-1 646 (700-1) | 1660-2 726 (800-2) | 1660-2 $\frac{1}{4}$ 726 (800-2 $\frac{1}{4}$) |