

VALPARAISO, INDIANA

AL-5460 (FAA)

21252

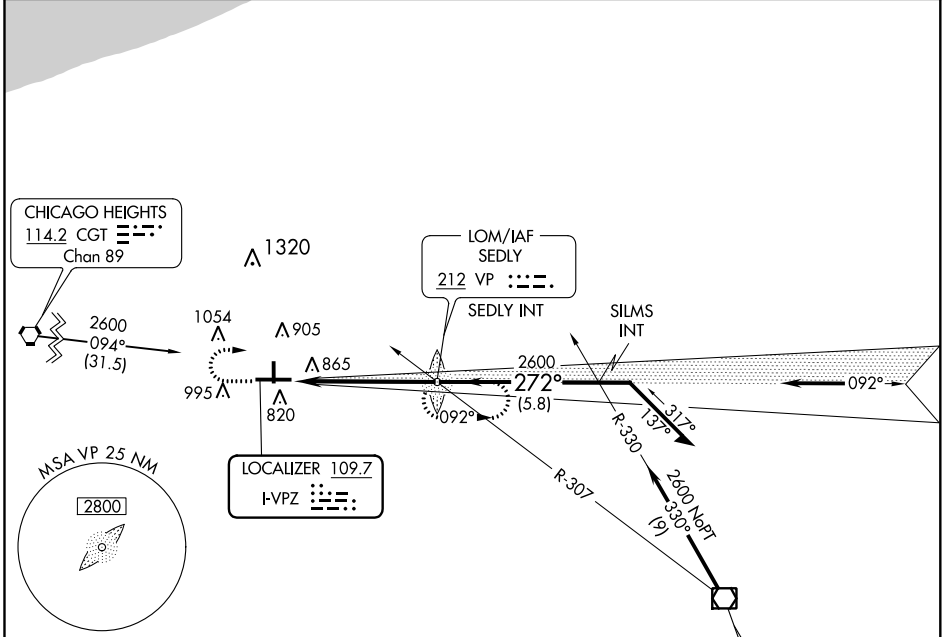
LOC I-VPZ 109.7	APP CRS 272°	Rwy Idg TDZE Apt Elev	6500 770 770
---------------------------	------------------------	-----------------------------	---

ILS RWY 27

PORTER COUNTY RGNL (VPZ)

	MALS R	MISSED APPROACH: Climb to 1400, then climbing right turn to 2600 direct SEDLY LOM and hold.	
--	--------	---	--

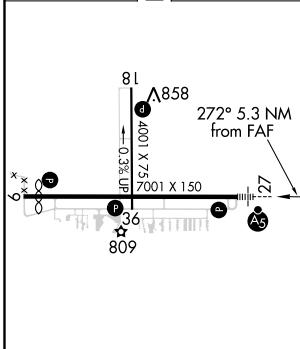
ASOS 125.875	SOUTH BEND APP CON * 132.05 257.8	CLNC DEL 120.525	UNICOM 122.725 (CTAF)
------------------------	---	----------------------------	---------------------------------



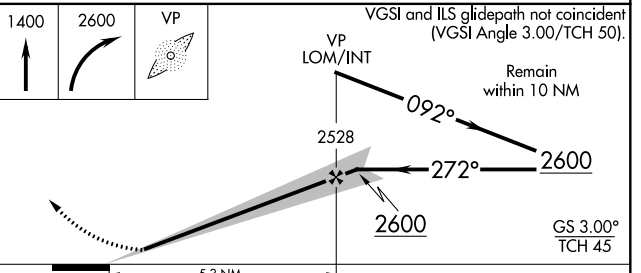
EC-2, 09 SEP 2021 to 07 OCT 2021

EC-2, 09 SEP 2021 to 07 OCT 2021

ELEV 770	D	TDZE 770
----------	----------	----------



ADF REQUIRED



HIRL Rwy 9-27					
MIRL Rwy 18-36					
REIL Rwys 9, 18 and 36					
FAF to MAP 5.3 NM					
Knots	60	90	120	150	180
Min:Sec	5:18	3:32	2:39	2:07	1:46

CATEGORY	A	B	C	D
S-ILS 27	970-1/2 200 (200-1/2)			
S-LOC 27	1120-1/2 350 (400-1/2)			1120-3/4 350 (400-3/4)
CIRCLING	1260-1 490 (500-1)	1300-1 530 (600-1)	1360-1/2 590 (600-1/2)	1620-2 3/4 850 (900-2 3/4)

VALPARAISO, INDIANA
Amdt 3B 09SEP21

41°27'N-87°00'W

PORTER COUNTY RGNL (VPZ)

ILS RWY 27