


WAAS CH <b>86806</b> <b>W27A</b>	APP CRS <b>272°</b>	Rwy Idg TDZE <b>770</b> Apt Elev <b>770</b>	<b>6500</b>
--	------------------------	---	-------------

# RNAV (GPS) RWY 27

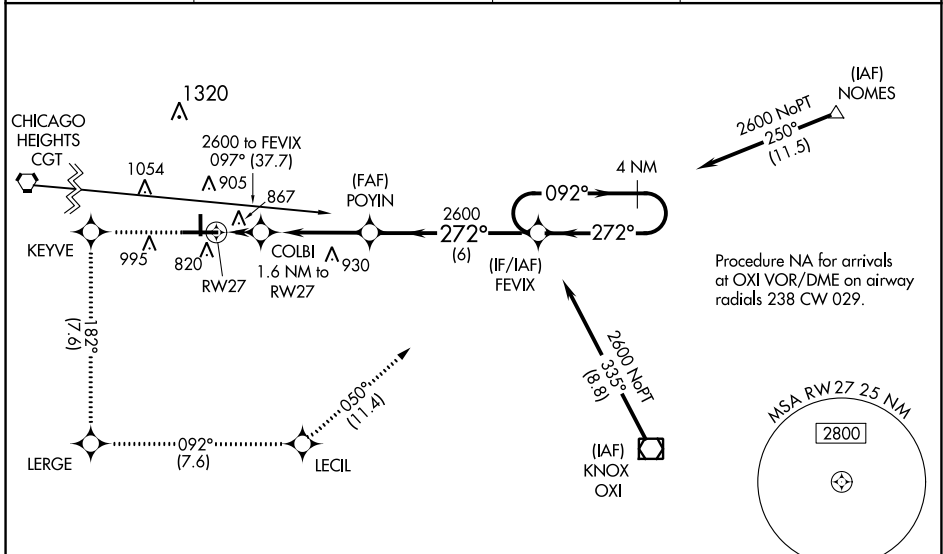
PORTER COUNTY RGNL (VPZ)

**⚠** Baro-VNAV NA when using Lansing Muni altimeter setting. For uncompensated Baro-VNAV systems, procedure NA below -16°C (4°F) or above 54°C (130°F). DME/DME RNP-0.3 NA. When local altimeter setting not received, use Lansing Muni altimeter setting; increase LPV DA to 1097 feet and all visibilities ¼ SM; increase LNAV/VNAV DA to 1278 feet and all visibilities ¼ SM; increase all MDA's 80 feet and LNAV and Circling Cats C/D visibility ¼ SM.

**MALSR** 

**MISSED APPROACH:**  
Climb to 2600 direct KEYVE and on track 182° to LERGE and on track 092° to LECIL and on track 050° to FEVIX and hold.

ASOS <b>125.875</b>	SOUTH BEND APP CON * <b>132.05 257.8</b>	CLNC DEL <b>120.525</b>	UNICOM <b>122.725 (CTAF) 0</b>
------------------------	---	----------------------------	-----------------------------------



ELEV 770	<b>D</b>	TDZE 770
----------	----------	----------

2600 KEYVE	LERGE	LECIL	FEVIX
↑	tr 182°	tr 092°	tr 050°

\*LNAV only.

COLBI 1.6 NM to RW27  
POYIN 2600  
FEVIX  
4 NM Holding Pattern  
092° → 2600  
← 272°  
2600  
VGSIs and descent angles not coincident (VGSi Angle 3.00/TCH 50). GP 3.00° TCH 50

CATEGORY	A	B	C	D
LPV DA		1020-½	250 (300-½)	
LNAV/VNAV DA		1201-1	431 (500-1)	
LNAV MDA	1180-½	410 (500-½)	1180-¾	410 (500-¾)
CIRCLING	1260-1 490 (500-1)	1300-1 530 (600-1)	1360-1½ 590 (600-1½)	1620-2¾ 850 (900-2¾)

HIRL Rwy 9-27 **0**  
MIRL Rwy 18-36 **0**  
REIL Rwy 9, 18 and 36 **0**

EC-2, 09 SEP 2021 to 07 OCT 2021

EC-2, 09 SEP 2021 to 07 OCT 2021