


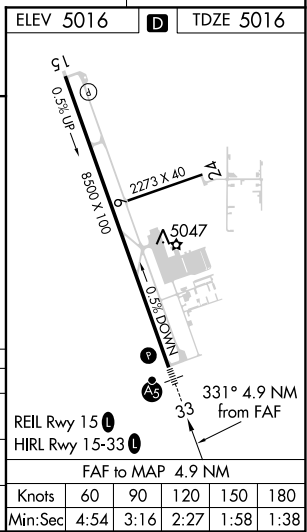
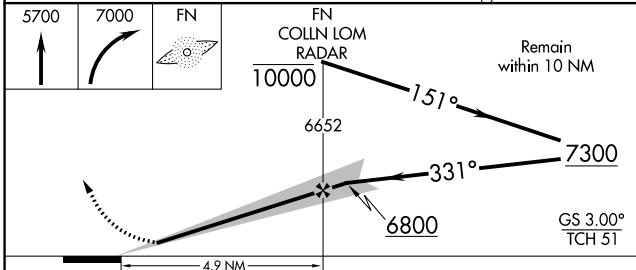
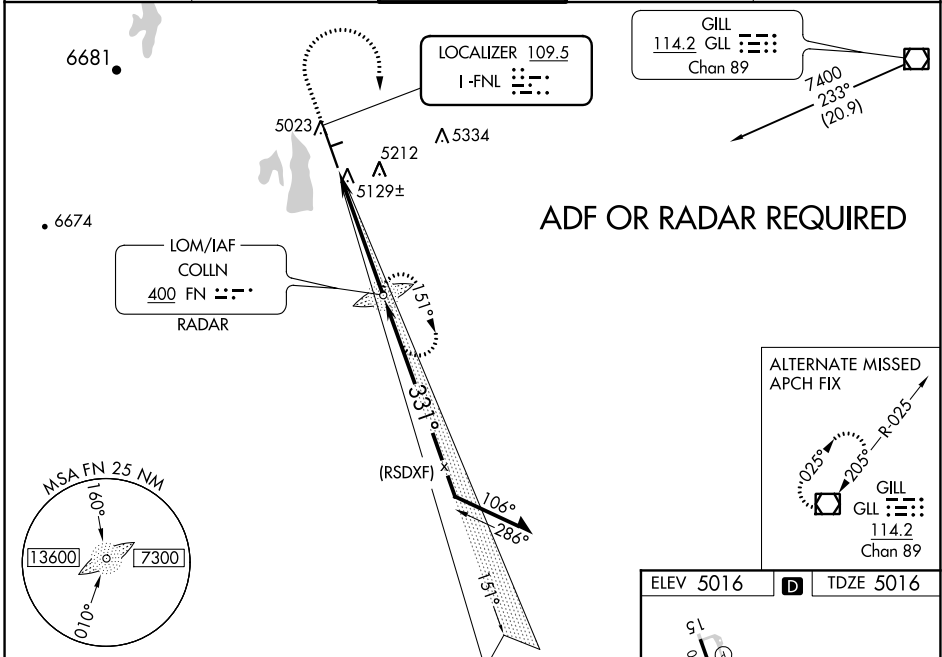
LOC I-FNL 109.5	APP CRS 331°	Rwy Idg TDZE Apt Elev	8500 5016 5016
---------------------------	------------------------	-----------------------------	---

ILS or LOC RWY 33

NORTHERN COLORADO RGNL (F'NL)

<p>NA Circling to Rwy 6/24 NA at night. ADF required. When local altimeter setting not received, use Denver Intl altimeter setting and increase all DA 147 feet and all MDA 160 feet. Increase S-ILS 33 visibility all Cats ¼ SM, S-LOC 33 Cat C/D visibility ½ SM, and Circling Cat C/D visibility ½ SM. For inop ALS, when using Denver Intl altimeter setting increase S-ILS 33 visibility all Cats to ¼ mile.</p>	<p>MALSR</p> 	<p>MISSED APPROACH: Climb to 5700 then climbing right turn to 7000 direct COLLN LOM/RADAR and hold.</p>
--	--	---

ATIS 135.075	DENVER APP CON 134.85 251.125	NOCO TOWER* 118.4 (CTAF)	GND CON 121.65	CLNC DEL 120.25 (When twr closed)
------------------------	---	------------------------------------	--------------------------	--



CATEGORY	A	B	C	D		
S-ILS 33	5216-½ 200 (200-½)					
S-LOC 33	5380-½ 364 (400-½)		5380-¾ 364 (400-¾)			
CIRCLING	5500-1 484 (500-1)	5580-1 564 (600-1)	5580-1½ 564 (600-½)	5760-2½ 744 (600-2½)		
	Knots	60	90	120	150	180
	Min:Sec	4:54	3:16	2:27	1:58	1:38

SW-1, 09 SEP 2021 to 07 OCT 2021

SW-1, 09 SEP 2021 to 07 OCT 2021