

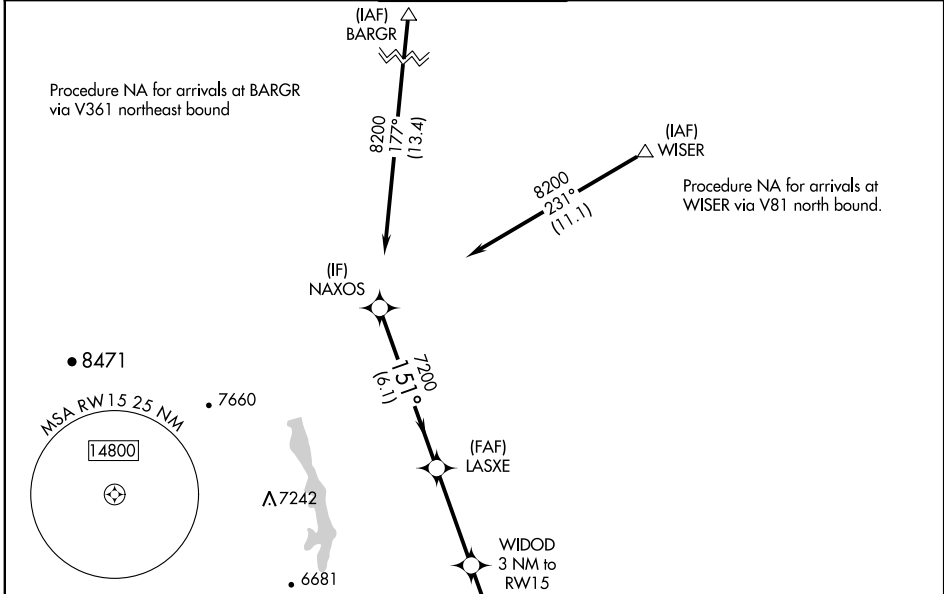
APP CRS 151°	Rwy Idg 8500
	TDZE 4985
	Apt Elev 5016

RNAV (GPS) RWY 15

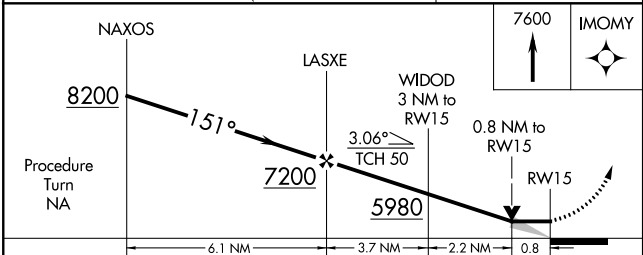
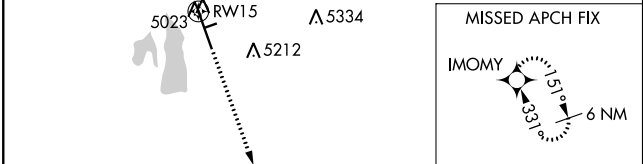
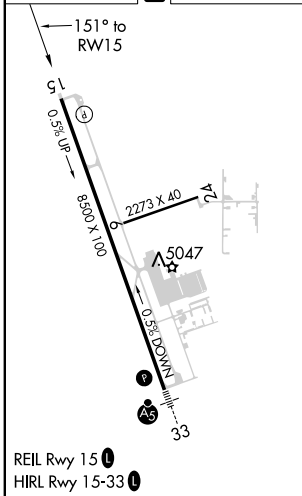
NORTHERN COLORADO RGNL (FNL)

RNP APCH.	<p>▼ VDP NA when using Denver Intl altimeter setting.</p> <p>▲ When local altimeter setting not received, use Denver Intl altimeter setting and increase all MDA 160 feet and visibility Cat C and D 3/8 SM.</p>	MISSED APPROACH: Climb to 7600 direct IMOMY and hold.
-----------	--	---

ATIS 135.075	DENVER APP CON 134.85 251.125	NOCO TOWER* 118.4 (CTAF) 0	GND CON 121.65	CLNC DEL 120.25 (When twr closed)
------------------------	---	--------------------------------------	--------------------------	--



ELEV 5016	D	TDZE 4985
-----------	---	-----------



CATEGORY	A	B	C	D
LNAV MDA	5280-1 295 (300-1)			

SW-1, 09 SEP 2021 to 07 OCT 2021

SW-1, 09 SEP 2021 to 07 OCT 2021