

NDB FFC 316	APP CRS 313°	Rwy Idg TDZE Apt Elev	5568 808 808
-----------------------	------------------------	-----------------------------	---

NDB RWY 31

ATLANTA RGNL FALCON FLD (F'F'C)

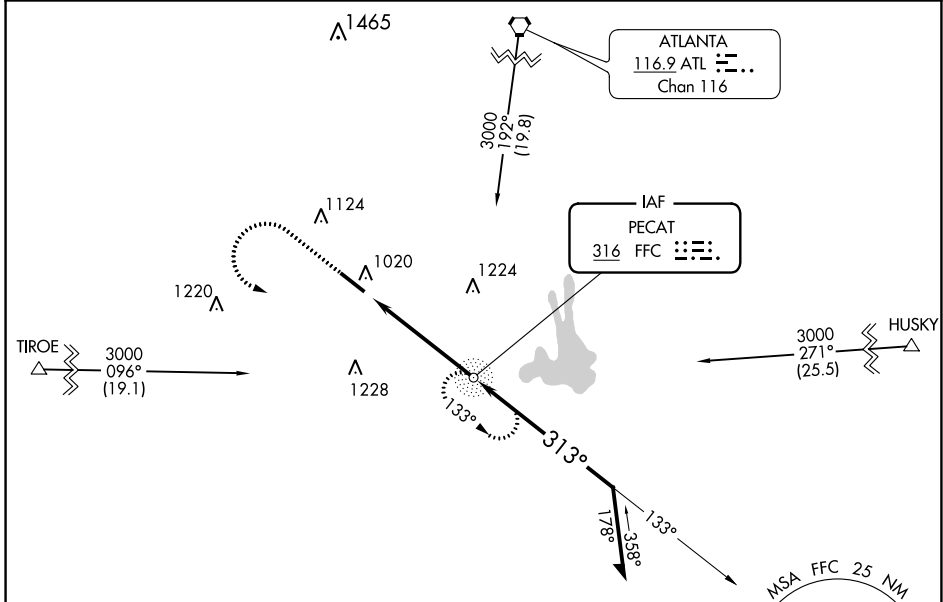
⚠ Inop table does not apply. Helicopter visibility reduction below 3/4 SM NA. When local altimeter setting not received, use Newnan Coweta County altimeter setting and increase all MDA 60 feet; increase S-31 Cats C/D and Circling Cat C visibility 1/8 mile, and increase Circling Cat D visibility 1/4 mile. Circling Rwy 13 NA at night.

⚠ NA

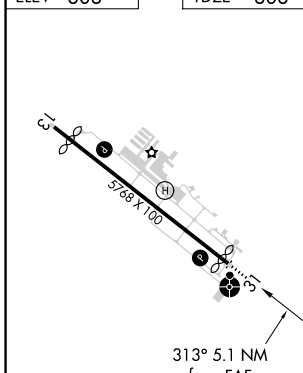
ODALS

MISSED APPROACH: Climb to 1700 then climbing left turn to 2500 direct FFC NDB and hold.

ASOS 118.525	ATLANTA APP CON 119.8 354.125	CLNC DEL 119.8	UNICOM 123.05 (CTAF)
------------------------	---	--------------------------	--------------------------------



ELEV 808	TDZE 808
----------	----------



REIL Rwy 13

MIRL Rwy 13-31

FAF to MAP 5.1 NM

Knots	60	90	120	150	180
Min:Sec	5:06	3:24	2:33	2:02	1:42

1700	2500	FFC	FFC NDB	Remain within 10 NM															
<table border="1"> <thead> <tr> <th>CATEGORY</th> <th>A</th> <th>B</th> <th>C</th> <th>D</th> </tr> </thead> <tbody> <tr> <td>S-31</td> <td>1360-1</td> <td>552 (600-1)</td> <td>1360-1 1/8</td> <td>552 (600-1 1/8)</td> </tr> <tr> <td>CIRCLING</td> <td>1360-1</td> <td>552 (600-1)</td> <td>1360-1 1/8</td> <td>1440-2 632 (700-2)</td> </tr> </tbody> </table>					CATEGORY	A	B	C	D	S-31	1360-1	552 (600-1)	1360-1 1/8	552 (600-1 1/8)	CIRCLING	1360-1	552 (600-1)	1360-1 1/8	1440-2 632 (700-2)
CATEGORY	A	B	C	D															
S-31	1360-1	552 (600-1)	1360-1 1/8	552 (600-1 1/8)															
CIRCLING	1360-1	552 (600-1)	1360-1 1/8	1440-2 632 (700-2)															

SE-4, 09 SEP 2021 to 07 OCT 2021

SE-4, 09 SEP 2021 to 07 OCT 2021