

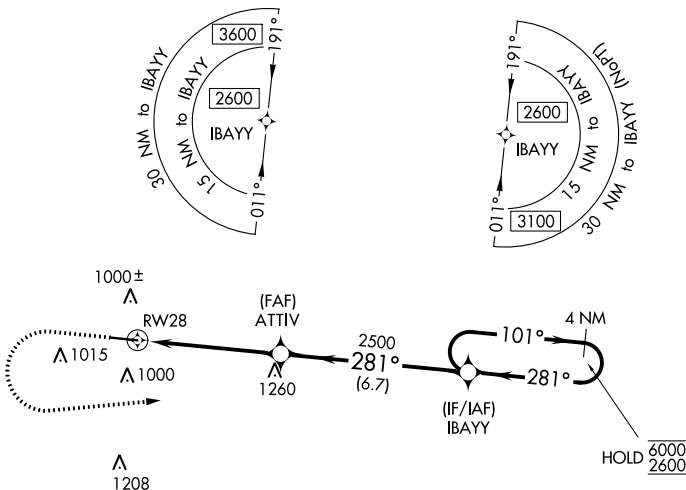
WAAS CH 72710 W28A	APP CRS 281°	Rwy Idg 5500 TDZE 810 Apt Elev 820
--	------------------------	---

RNAV (GPS) RWY 28

COVINGTON MUNI (CVC)

RNP APCH.		MALSR	MISSED APPROACH: Climb to 1300 then climbing left turn to 2600 direct IBAYY and hold.
<p>⚠ Circling Rwy 10 NA at night. Rwy 28 helicopter visibility reduction below 3/4 SM NA. For uncompensated Baro-VNAV systems, LNAV/VNAV NA below -16°C or above 54°C. For inop ALS, increase LPV all Cats visibility to 7/8 SM and increase LNAV Cat A/B visibility to 1 SM, and Cat C/D to 1 3/8 SM.</p>			
AWOS-3 118.725	ATLANTA APP CON 128.575 343.675	CLNC DEL 119.875	UNICOM 123.0 (CTAF) 0

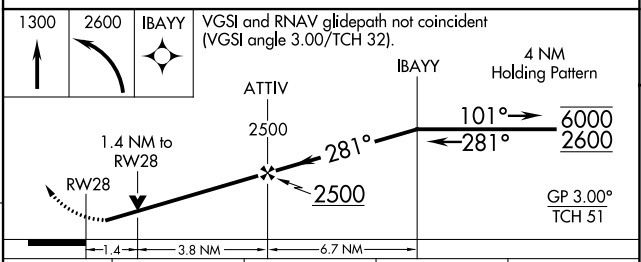
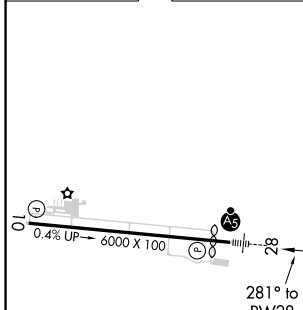
△ 2049



SE-4, 09 SEP 2021 to 07 OCT 2021

SE-4, 09 SEP 2021 to 07 OCT 2021

ELEV 820	D	TDZE 810
----------	----------	----------



CATEGORY	A	B	C	D
LPV DA		1078-3/4	268 (300-3/4)	
LNAV/VNAV DA		1243-3/4	433 (500-3/4)	
LNAV MDA	1280-3/4	470 (500-3/4)	1280-1	470 (500-1)
C CIRCLING	1320-1	500 (500-1)	1380-1 1/2 560 (600-1 1/2)	1380-2 560 (600-2)