

WAAS CH <b>99510</b> <b>W10A</b>	APP CRS <b>102°</b>	Rwy Idg TDZE Apt Elev	<b>5506</b> <b>1014</b> <b>1014</b>
--	------------------------	-----------------------------	---

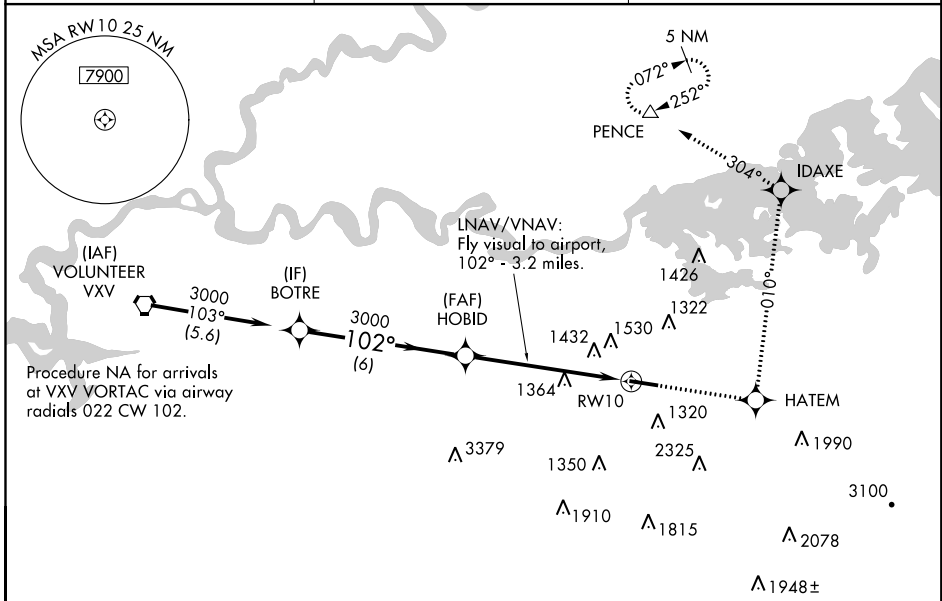
# RNAV (GPS) RWY 10

GATLINBURG-PIGEON FORGE (GKT)

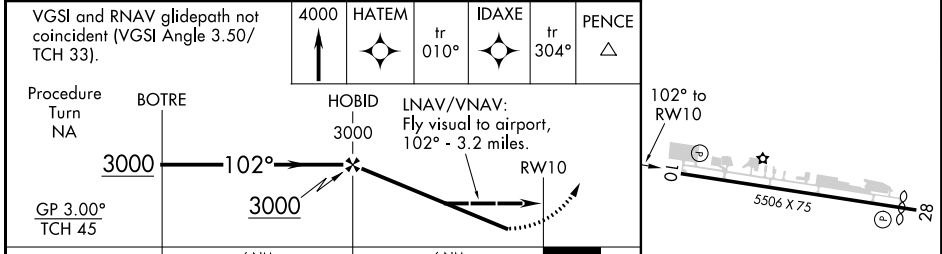
**⚠** LNAV/VNAV NA when using Mc Ghee Tyson altimeter setting. For uncompensated Baro-VNAV systems, LNAV/VNAV NA below -17°C (2°F) or above 47°C (116°F).  
**⚠** NA DME/DME RNP-0.3 NA. Helicopter visibility reduction below 3/4 SM NA. When local altimeter setting not received, use Mc Ghee Tyson altimeter setting and increase all DA/MDA 60 feet and increase LPV all Cats and LNAV and Circling Cats C/D visibility 1/4 mile. Circling to Rwy 28 NA at night.

**MISSED APPROACH:** Climb to 4000 direct HATEM and via 010° track to IDAXE and via 304° track to PENCE and hold.

AWOS-3 <b>126.875</b>	KNOXVILLE APP CON <b>132.8 360.8</b>	UNICOM <b>123.0 (CTAF) 0</b>
--------------------------	---	---------------------------------



ELEV 1014	TDZE 1014
-----------	-----------



CATEGORY	A	B	C	D
LPV DA	1371-1 1/4		357 (400-1 1/4)	
LNAV/VNAV DA	2013-2	999 (1000-2)	2013-3	999 (1000-3)
LNAV MDA	1800-1 786 (800-1)	1800-1 1/4 786 (800-1 1/4)	1800-2 1/4 786 (800-2 1/4)	1800-2 1/2 786 (800-2 1/2)
CIRCLING	1800-1 786 (800-1)	1880-1 1/4 866 (900-1 1/4)	1880-2 1/2 866 (900-2 1/2)	1880-2 3/4 866 (900-2 3/4)

REIL Rws 10 and 28  
MRL Rwy 10-28 0

SE-1, 09 SEP 2021 to 07 OCT 2021

SE-1, 09 SEP 2021 to 07 OCT 2021