

WAAS CH <b>53740</b> <b>W20A</b>	APP CRS <b>201°</b>	Rwy Idg TDZE <b>4700</b> <b>117</b> Apt Elev <b>117</b>
----------------------------------------	------------------------	------------------------------------------------------------------

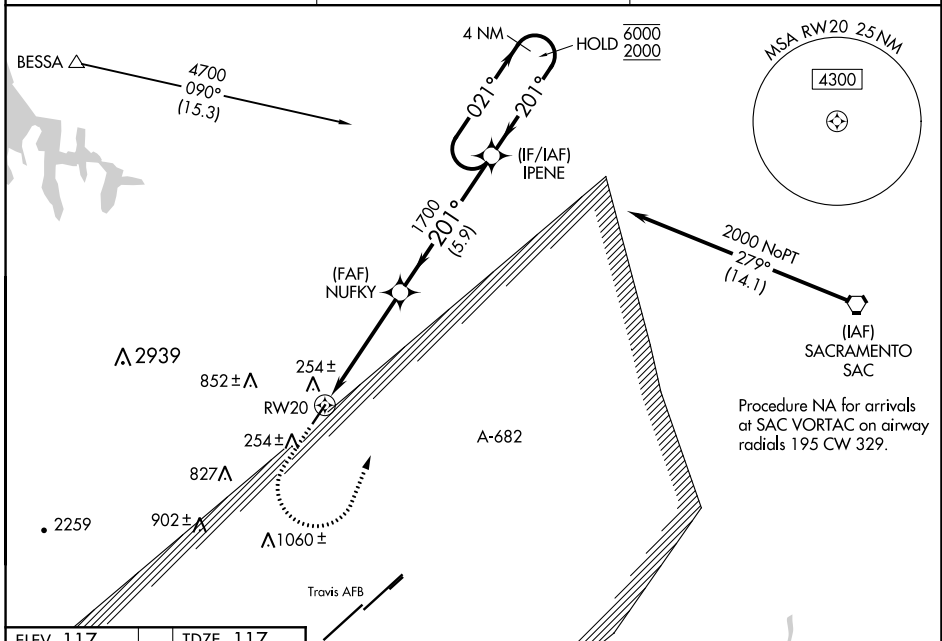
# RNAV (GPS) RWY 20

NUT TREE (VCB)

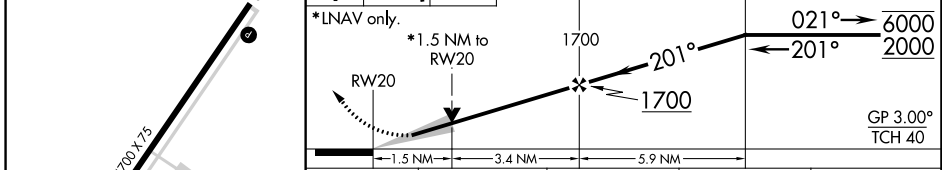
RNP APCH. MISSED APPROACH: (Do not exceed 220K until IPENE) Climb to 580 then climbing left turn to 2100 direct IPENE and hold. # Missed approach requires minimum climb of 229 feet per NM to 1300.

▽ Circling NA west of Rwy 2-20. Circling Rwy 2 NA at night.  
⚠ For uncompensated Baro-VNAV systems, LNAV/VNAV NA below -3°C or above 54°C.

ASOS <b>134.75</b>	TRAVIS APP CON <b>128.4 281.45</b>	CTAF <b>122.85</b> <span style="font-size: 1.5em;">●</span>
-----------------------	---------------------------------------	----------------------------------------------------------------



ELEV 117	TDZE 117	580	2100	IPENE	VGSI and RNAV glidepath not coincident (VGSI Angle 3.75/TCH 27).	IPENE	4 NM Holding Pattern
----------	----------	-----	------	-------	------------------------------------------------------------------	-------	----------------------



CATEGORY	A	B	C	D
LPV DA#		367- <sup>3</sup> / <sub>4</sub>	250 (300- <sup>3</sup> / <sub>4</sub> )	
LPV DA		384- <sup>7</sup> / <sub>8</sub>	267 (300- <sup>7</sup> / <sub>8</sub> )	
LNAV/VNAV DA		614-1 <sup>3</sup> / <sub>8</sub>	497 (500-1 <sup>3</sup> / <sub>8</sub> )	
LNAV MDA	720-1	603 (700-1)	720-1 <sup>3</sup> / <sub>4</sub>	603 (700-1 <sup>3</sup> / <sub>4</sub> )
<span style="font-size: 1.5em;">■</span> CIRCLING	720-1	603 (700-1)	960-2 <sup>1</sup> / <sub>2</sub> 843 (900-2 <sup>1</sup> / <sub>2</sub> )	1480-3 1363 (1400-3)

SW-2, 09 SEP 2021 to 07 OCT 2021

SW-2, 09 SEP 2021 to 07 OCT 2021