

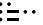
(SOKOY3.SOKOY) 17229
SOKOY THREE DEPARTURE

AL-6094 (FAA)

NUT TREE (VCB)
 VACAVILLE, CALIFORNIA

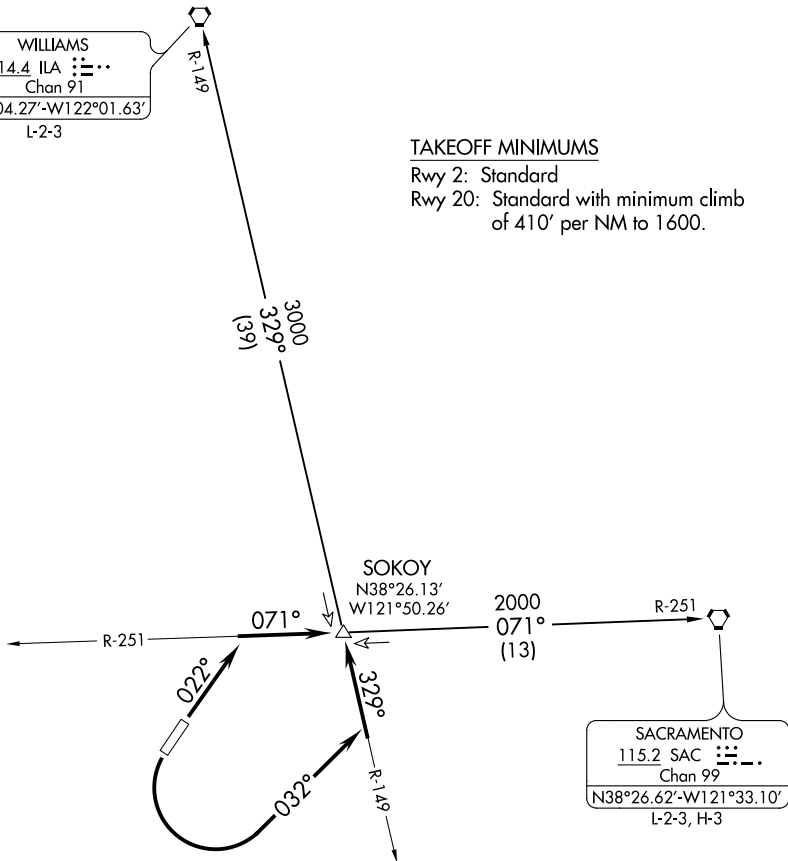
TRAVIS DEP CON
 128.4 281.45

**TOP ALTITUDE:
 ASSIGNED BY ATC**

WILLIAMS
 114.4 ILA 
 Chan 91
 N39°04.27'-W122°01.63'
 L-2-3

TAKEOFF MINIMUMS

Rwy 2: Standard
 Rwy 20: Standard with minimum climb
 of 410' per NM to 1600.



NOTE: Chart not to scale.

DEPARTURE ROUTE DESCRIPTION

TAKEOFF RUNWAY 2: Climb via heading 022°, intercept SAC R-251 to SOKOY/
 SAC 13 DME.

TAKEOFF RUNWAY 20: Turn left heading 032°, intercept ILA R-149 to SOKOY/
 ILA 39 DME.

SACRAMENTO TRANSITION (SOKOY3.SAC): From over SOKOY on SAC R-251 to
 SAC VORTAC.

WILLIAMS TRANSITION (SOKOY3.ILA): From over SOKOY on ILA R-149 to
 ILA VORTAC.

SOKOY THREE DEPARTURE
 (SOKOY3.SOKOY) 17AUG17

VACAVILLE, CALIFORNIA
 NUT TREE (VCB)

SW-2, 09 SEP 2021 to 07 OCT 2021

SW-2, 09 SEP 2021 to 07 OCT 2021