

POWDR ONE ARRIVAL
(POWDR.POWDR1) 30JAN20

DENVER APP CON
120.35 379.3
APA ATIS
120.3
BJC ATIS
126.25
CFO ATIS
119.025
DEN D-ATIS ARR
125.6 379.9
KBKF ATIS
119.675 259.3

GILL
114.2 GLL
Chan 89
N40°30.23' W104°33.18'

NORTHERN
COLORADO
RGNL

GREELEY-WELD
COUNTY

MILE HIGH
114.7 DVV
Chan 94
N39°53.68' W104°37.46'

ROCKY
MOUNTAIN
METRO

SLOPE
N39°47.69'
W104°47.86'

DENVER
INTL

DENVER
117.9 DEN
Chan 126
N39°48.75' W104°39.64'

COLORADO AIR AND
SPACE PORT

BUCKLEY
AFB

CENTENNIAL

FALCON
116.3 FGF
Chan 110
N39°41.41' W104°37.26'

POWDR
N39°23.71' W105°28.89'
VERTICAL NAVIGATION
PLANNING INFORMATION
TURBOJETS: Expect FL190 250K
or as assigned by ATC.

COLAS
N39°20.58'
W105°34.19'

HLLIE
N39°35.05'
W105°09.60'

KREMMLING
113.8 RLG
Chan 85

RED TABLE
113.0 DBL
Chan 77
N39°26.36' W106°53.68'
L-9, H-3

JNETT
N39°21.14'
W106°28.77'

SKPEED
N39°17.47'
W105°39.44'

BASEE
N39°12.37'
W105°48.00'

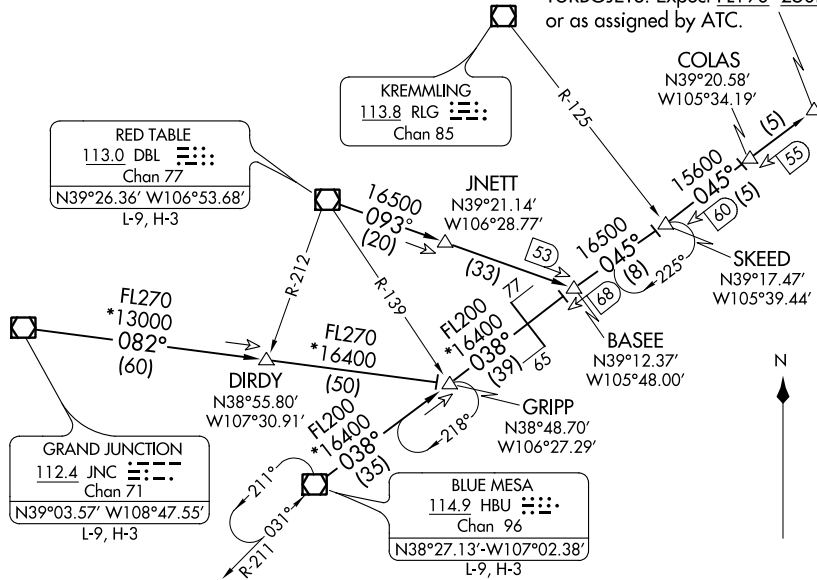
GRIPP
N38°48.70'
W106°27.29'

BLUE MESA
114.9 HBU
Chan 96
N38°27.13' W107°02.38'
L-9, H-3

DIRDY
N38°55.80'
W107°30.91'

GRAND JUNCTION
112.4 JNC
Chan 71
N39°03.57' W108°47.55'
L-9, H-3

DENVER, COLORADO



NOTE: DME required.
NOTE: Adjacent STAR is LARKS ARRIVAL.
NOTE: Chart not to scale.

(NARRATIVE ON FOLLOWING PAGE)

(POWDR.POWDR1) 21168
POWDR ONE ARRIVAL

AL-9077 (FAA)

DENVER, COLORADO

ARRIVAL ROUTE DESCRIPTION

BLUE MESA TRANSITION (HBU.POWDR1): From over HBU VOR/DME on HBU R-038 to GRIPP then on HBU R-038 and DVV R-225 to BASEE then on DVV R-225 to POWDR. Thence. . . .

GRAND JUNCTION TRANSITION (JNC.POWDR1): From over JNC VOR/DME on JNC R-082 to GRIPP; then on HBU R-038 and DVV R-225 to BASEE then on DVV R-225 to POWDR. Thence. . . .

RED TABLE TRANSITION (DBL.POWDR1): From over DBL VOR/DME on DBL R-093 and DVV R-225 to POWDR. Thence. . . .

. . . .from over POWDR on the DVV VORTAC R-225 to HLLIE, then on DVV VORTAC R-225 to SLOPE, then on DVV VORTAC R-225 to DVV. Expect RADAR vectors to the final approach course at or before DVV VORTAC.

SW-1, 09 SEP 2021 to 07 OCT 2021

SW-1, 09 SEP 2021 to 07 OCT 2021